



PROTECTRON ELECTROMECH (P) LTD

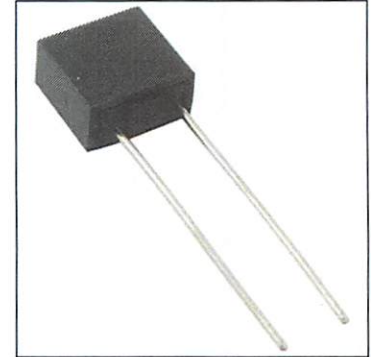
DESCRIPTION : RADIAL LEAD MICRO FUSES FAST ACTING

PART NO: PMF IN

RoHS



APPROVALS:



PHYSICAL DATA

MATERIAL

BASE AND CAP	:	PA66, UL 94-V0. BLACK COLOR
ROUND PINS	:	COPPER, TIN PLATED
PACKAGING TYPE		
IN BULK	:	1000 pcs per box
ON TAPE	:	Ammo Pack, 1000pcs box

ELECTRICAL DATA

RATED CURRENT	:	630mA ~6.3A
RATED VOLTAGE	:	250V AC
LOADING CAPACITY	:	1.5In FOR 1 HOUR Minimum
INTERRUPT RATING	:	35A or 10 times the rated current whichever is greater at 250V AC

MECHANICAL PROPERTIES

TENSILE TEST	:	3Kg
THRUST TEST	:	2N
BENDING TEST	:	NO DAMAGE ARE TO BE VISUALIZED AFTER TWO BENDS OF OPPOSITE DIRECTIONS OF LEAD



PROTECTRON ELECTROMECH (P) LTD

DESCRIPTION : RADIAL LEAD MICRO FUSES FAST ACTING

PART NO: PMF IN

ENDURANCE TEST :

LOADING 100% RATED CURRENT, 1hour ON, 15minutes OFF. KEEP 100cycles.

FOLLOWED BY 1hour at 1.5 TIMES THE RATED CURRENT.

THE VOLTAGE DROP ACROSS THE FUSE-LINK AFTER THE TEST SHALL NOT HAVE INCREASED BY MORE THAN 10% OF THE ORIGINAL VALUE MEASURED BEFORE THE TEST.

DERATING TEST :

IN AN AIR CIRCULATING OVEN AT 70°C, THE FUSES CAN LOAD 100% RATED CURRENT FOR 1hour AND THEY SHALL NOT OPERATE.

SOLDERING PROCESS PARAMETER :

WAVE SOLDERING

PRE - HEAT TEMPERATURE : 100°C ~ 160°C
PRE - HEAT TIME : 60sec ~ 180sec
SOLDER TEMPERATURE : 260°C Max
DWELL TIME : 2sec ~ 5sec

RE-FLOW SOLDERING

PRE - HEAT TEMPERATURE : 140°C ~ 165°C
PRE - HEAT TIME : 90sec ~ 120sec
PEAK TEMPERATURE : 250°C Max
SOLDERING TIME > 200°C : 30sec

MANUAL SOLDERING

SOLDER IRON TEMPERATURE : 350°C ± 5°C
HEATING TIME : 5sec Max

SALT SPRAY TEST :

MIL-STD-202G, METHOD 101E, TEST CONDITION A

SALT SPRAY CONCENTRATION : 5±1%

TEST LIQUID TEMPERATURE : 35±0.5°C

96hrs, ΔR < 15%

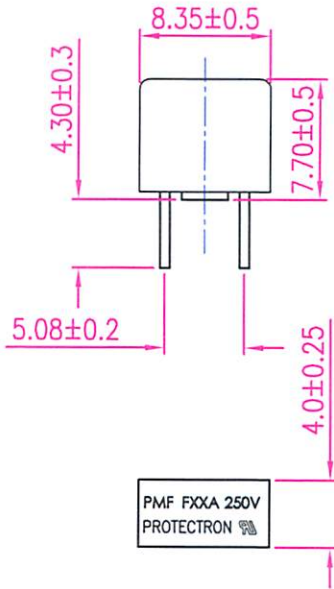


PROTECTRON ELECTROMECH (P) LTD

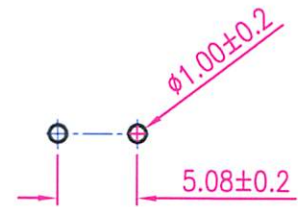
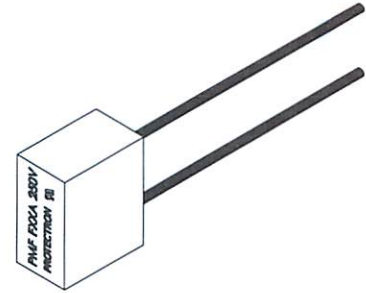
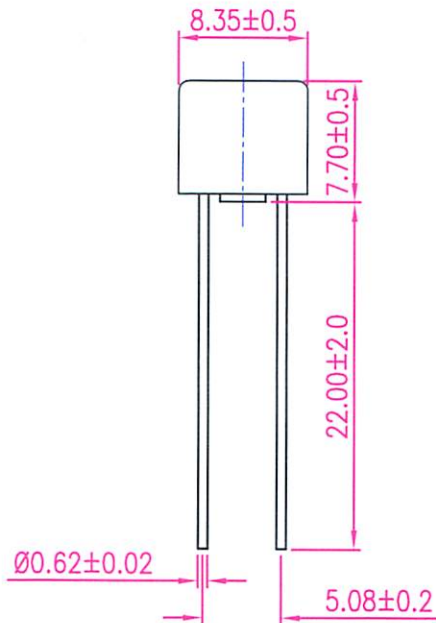
DESCRIPTION : RADIAL LEAD MICRO FUSES FAST ACTING

PART NO:PMF IN

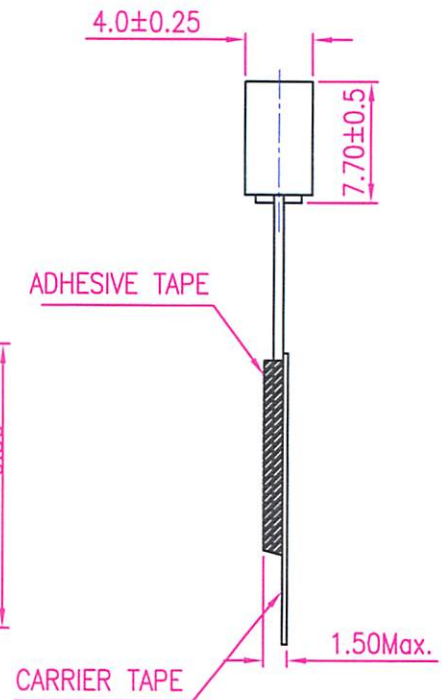
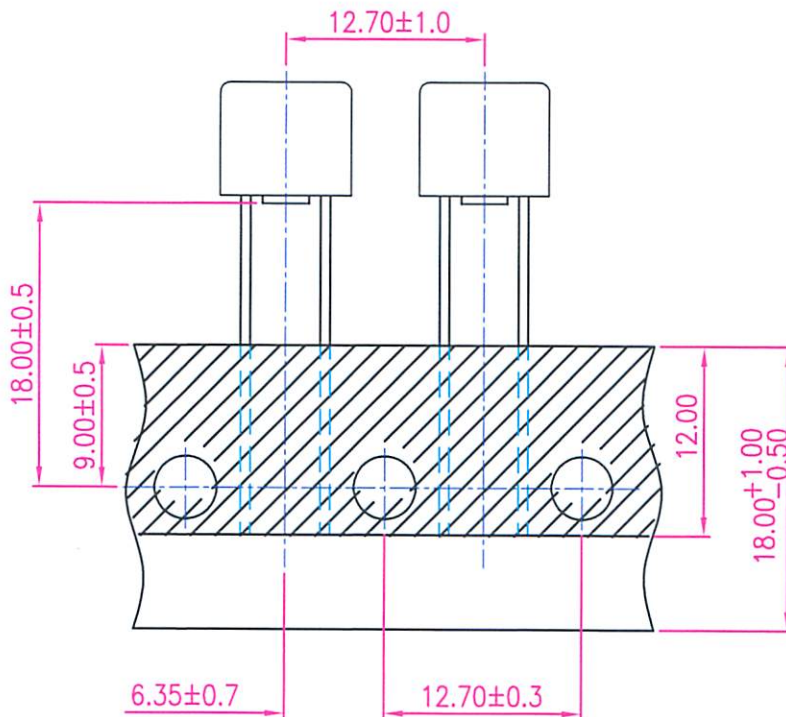
SHORT LEADS



LONG LEADS



MOUNTING HOLES



Projection:



Scale: NTS

Sht. Size: A4

Gen. Tol.: ±0.25mm
±2°

ALL DIMENSIONS ARE IN MM.
IF UNLESS OTHERWISE SPECIFIED.



PROTECTRON ELECTROMECH (P) LTD

DESCRIPTION : RADIAL LEAD MICRO FUSES FAST ACTING

PART NO:PMF IN

ELECTRICAL CHARACTERISTIC

RATED CURRENT	1.5 In		2.1 In		2.75 In		4 In		10 In
	MIN	MAX	MIN	MAX	MIN	MAX	MIN	MAX	MAX
630mA~5A	60 min	30 min	10 ms	3 sec	3 ms	300 ms	20 ms		
6.3A	60 min	30 min	10 ms	5 sec	3 ms	300 ms	20 ms		

FAST ACTING FUSES TYPE PMF

PROTECTRON PART NUMBERS	Ampere Rating (In)	Voltage Rating (V)
PMF 0.63A	630mA	250V
PMF 0.8A	800mA	
PMF 1A	1A	
PMF 1.25A	1.25A	
PMF 1.6A	1.6A	
PMF 2A	2A	
PMF 2.5A	2.5A	
PMF 3.15A	3.15A	
PMF 4A	4A	
PMF 5A	5A	
PMF 6.3A	6.3A	

ORDERING INFORMATION

PMF SERIES
(REFER TABLE)

A3	TESTING DETAIL ADDED	GEETHA	24.01.2020		
A2	DIMENSION REVISED	RAMYA	21.06.2019		
A1	MARKING DETAILS REVISED	SUPREETA	20.06.2016	SUJATHA	SACHIN
A	ORIGINAL	KEERTHI	08.01.2015	SACHIN	V.RAMANI
REV.	DESCRIPTION	DRN. BY	DATE	CK'ED BY	APP'D BY

Projection:



Scale: NTS

Sht. Size: A4

Gen. Tol.: ±0.25mm
±2'

ALL DIMENSIONS ARE IN MM.
IF UNLESS OTHERWISE SPECIFIED.