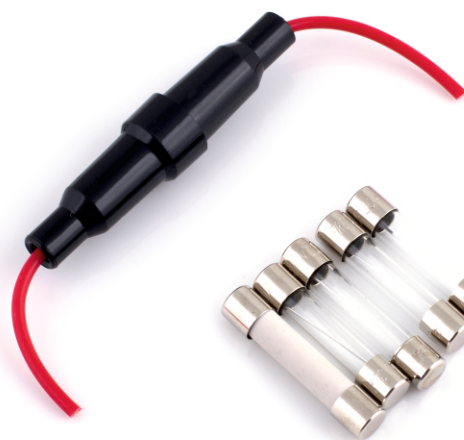
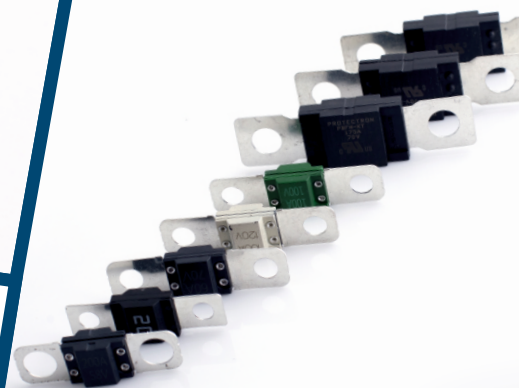
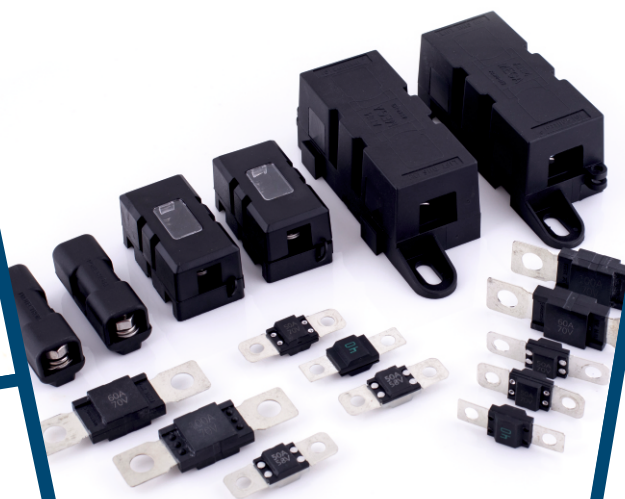




PROTECTRON[®]
ELECTROMECH (P) LTD

**AUTOMOTIVE FUSES &
ACCESSORIES**



ABOUT US

Protectron Electromech is a manufacturer of professional grade circuit protection devices, interconnect solutions, EMI / RFI shielding products and cable assemblies.

Our team has extensive experience across wide variety of industries and is focused on technology. Our customers include automotive, EV, defense, telecom, computer, medical, lighting, domestic appliances and a host of other industrial users.

QUALITY ASSURANCE

With this focus over 50 years of industry experience, we strive to offer our customers high quality and value driven solutions. The assurance of quality and service is strengthened by the various product approvals and certifications. The company maintains a well documented system utilizing an ERP package for all manufacturing operations and quality assurance functions.

PRODUCT APPROVALS

Fuses - UL, RoHS, ARAI & LCSO
Connectors – RoHS, LCSO

CERTIFICATION

ISO 9001, 14001 & IATF 16949



AUTOMOTIVE FUSE

BLADE FUSE

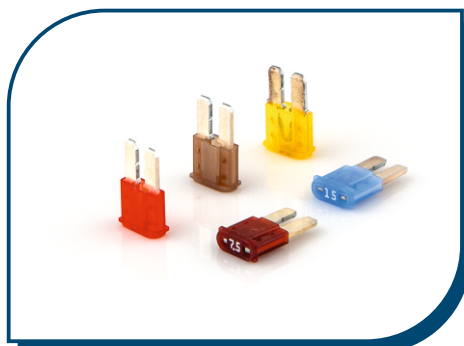


Midi Blade Fuse (PA/PC)

Series Part no.	PTF 200 In-N / PTF 200 In
Interrupting Rating	1000A @32VDC
Available Rating	2A to 40A
Voltage Rating	32 VDC
Fuse Material	Zinc Alloy, Plated
Housing Material	Nylon (PA66) / Polycarbonate
Compliance	SAE J1284, ISO 8820-3

Midi Blade Fuse with Short Leg

Series Part no.	PTF 200 In-SN
Interrupting Rating	1000A @32VDC
Available Rating	2A to 40A
Voltage Rating	32 VDC
Fuse Material	Zinc Alloy, Plated
Housing Material	Nylon (PA66)



Micro 2 Fuse

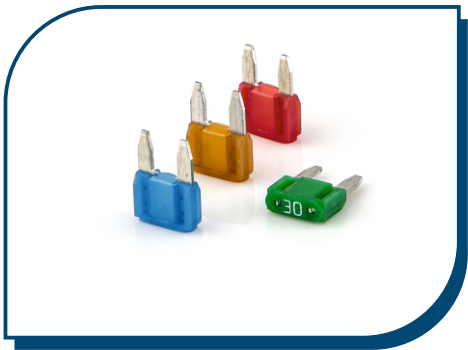
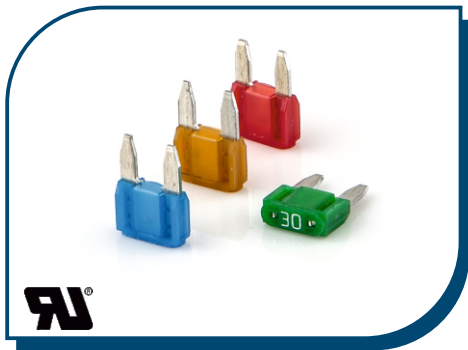
Series Part no.	PTF 500 In
Interrupting Rating	1000A @32VDC
Available Rating	5A to 30A
Voltage Rating	32 VDC
Fuse Material	Zinc Alloy, Plated
Housing Material	Nylon (PA66)
Compliance	SAE 2741, ISO 8820-3

AUTOMOTIVE FUSE

BLADE FUSE

Mini Blade Fuse - 32 V

Series Part no.	PTF 300-In
Interrupting Rating	1000A @32VDC
Available Rating	2A to 30A
Voltage Rating	32 VDC
Fuse Material	Zinc Alloy, Plated
Housing Material	Nylon (PA66)
Compliance	SAE J2077, ISO 8820-3



Mini Blade Fuse - 58 V

Series Part no.	PTF 600 In
Interrupting Rating	1000A @58VDC
Available Rating	2A to 30A
Voltage Rating	58 VDC
Fuse Material	Zinc Alloy, Plated
Housing Material	Nylon (PA66)
Compliance	SAE J2077, SAE 2576, ISO 8820-3

Low Profile Mini Blade Fuse

Series Part no.	PTF 400 In
Interrupting Rating	1000A @58VDC
Available Rating	5A to 30A
Voltage Rating	58 VDC
Fuse Material	Zinc Alloy, Plated
Housing Material	Nylon (PA66)
Compliance	ISO 8820-9

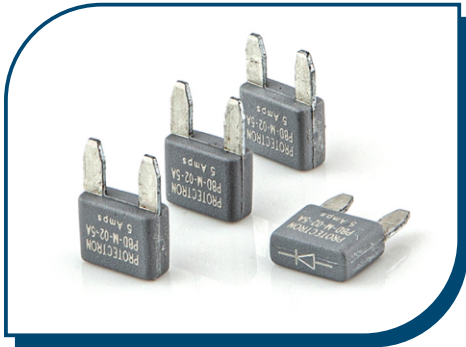
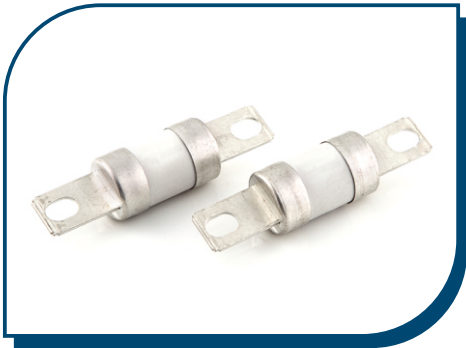


AUTOMOTIVE FUSE

BLADE FUSE

EV Fuse

Series Part no.	PEVFC 100 In
Interrupting Rating	2000A @450VDC
Available Rating	100A to 150A
Voltage Rating	450 VDC
Tube Material	Ceramic
Fuse Material	Copper Alloy, Plated
Cap	Copper Alloy, Plated
Bolting Tab	Copper Alloy, Plated
Compliance	ISO 8820-8

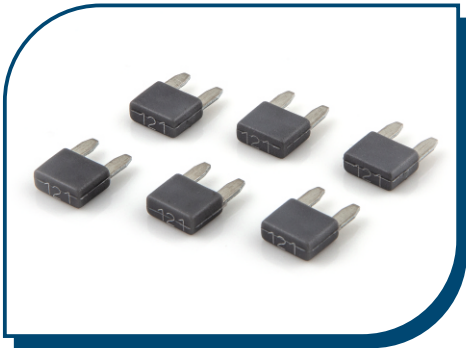


Mini Diode

Series Part no.	PBD-M-02-In
Avg. Output Current	1A to 5A
Peak Reverse Voltage	1000V
Max. RMS Voltage	700V
Max. DC Blocking Voltage	1000V
Contact Material	Zinc Alloy, Plated
Housing Material	Nylon (PA6)
No. of Diodes	1No Silicon Diode

Mini Resistor

Series Part no.	PMR-XX
Resistance	121 to 1000 Ω , 1/2W 1 to 5%
Fuse Material	Zn Alloy
Plating Material	Tin Plated
Housing Material	Nylon (PA6)



Note: Any Customization can be developed

AUTOMOTIVE FUSE

Glass Fuse

Series Part no.	PXF In VK/VU
Fuse Size	6.3X25/30mm
Breaking Capacity	35A or 10In >
Available Rating	0.5A to 20A
Voltage Rating	32VDC



Glass Fuse

Series Part no.	PSF
Fuse Size	5.2x20mm
Breaking Capacity	35A or 10In>
Available Rating	100mA to 30A
Voltage Rating	250V

Ceramic Fuse

Series Part no.	PATC-In
Fuse Size	6.3X32mm
Breaking Capacity	35A or 10In>
Available Rating	200mA to 35A
Voltage Rating	250V

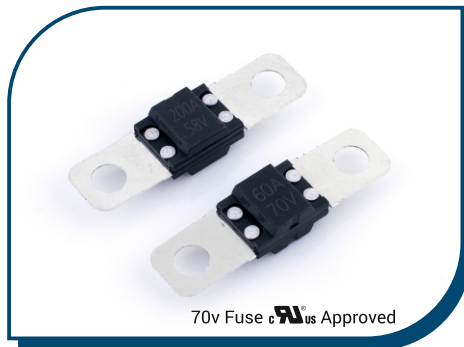
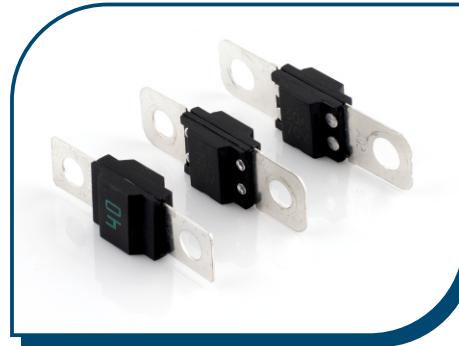


AUTOMOTIVE FUSE

MEGA & MIDI BOLT DOWN

Midi Bolt Down Fuse (32V)

Series Part no.	PBFT-LCT-In
Interrupting Rating	1000A @32 VDC
Available Rating	20A to 200A
Voltage Rating	32 VDC
Fuse Material	Copper
Plating Material	Tin Plated
Housing Material	Nylon (PA66)
Mounting Hole Size	M5
Compliance	ISO 8820-5

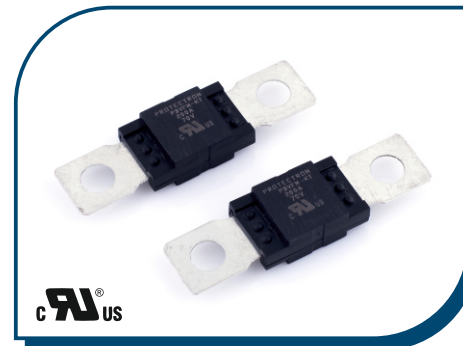


Midi Bolt Down Fuse (58V, 70V)

Series Part no.	PBFT-LT-In
Interrupting Rating	2500A @70 VDC
Available Rating	30A to 200A
Voltage Rating	70 VDC
Fuse Material	Copper
Plating Material	Tin Plated
Housing Material	PPA
Mounting Hole Size	M6
Compliance	ISO 20934

Mega Bolt Down Fuse (70V)

Series Part no.	PBFM-KT-In
Interrupting Rating	2500A @70 VDC
Available Rating	60A to 500A
Voltage Rating	70 VDC
Fuse Material	Copper
Plating Material	Sn plated
Housing Material	PPA
Mounting Hole Size	M8
Compliance	ISO 20934

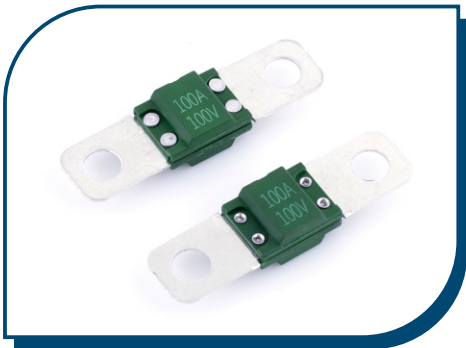


AUTOMOTIVE FUSE

MEGA & MIDI BOLT DOWN

Midi Bolt Down Fuse (100V)

Series Part no.	PBFT-100V-In
Interrupting Rating	2500A @100 VDC
Available Rating	30A to 200A
Voltage Rating	100 VDC
Fuse Material	Copper
Plating Material	Tin Plated
Housing Material	PPA + GF
Mounting Hole Size	M6
Compliance	ISO 20934



Midi Bolt Down Fuse (120V)

Series Part no.	PBFT-120V-In
Interrupting Rating	2500A @120 VDC
Available Rating	30A to 200A
Voltage Rating	120 VDC
Fuse Material	Copper
Plating Material	Tin Plated
Housing Material	CERAMIC
Mounting Hole Size	M6
Compliance	ISO 20934



AUTOMOTIVE FUSE

MEGA & MIDI BOLT DOWN

Box Type Fuse Holder

Series Part no.	P803B-01 / P803L-02
Operating Temperature Range	-40°C to +125°C
Available Rating	200A Max
Voltage Rating	32V / 70 VDC
Housing Material	NYLON, UL94V-0
Torque Rating	5Nm
Mounting Hole Size	M5.0 / M6.0



Midi Bolt Down Fuse Holder

Series Part no.	P803L-01
Operating Temperature Range	-40°C to +125°C
Fuse Rating	200A Max
Voltage Rating	70 VDC
Housing Material	Nylon Glass-Filled UL94V-0
Torque Rating	5Nm-15Nm
Mounting Hole Size	M6.0

Mega Bolt Down Fuse Holder

Series Part no.	P803C-02
Operating Temperature Range	-55°C to +105°C
Available Rating	500A Max
Voltage Rating	70 VDC
Housing Material	PBT+15%GF, UL94V-0
Torque Rating	5Nm
Mounting Hole Size	M8.0

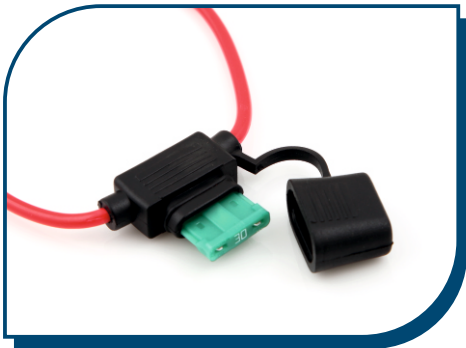


AUTOMOTIVE FUSE

INLINE FUSE HOLDERS

For Midi Blade Fuse

Part no.	P8039-19
Max. Current	20A
Insulation Resistance at 500V DC	100M Ω Min.
Contact Resistance	5m Ω Max at 1A DC
Dielectric strength for 60seconds	AC 1000V min.
Housing Material	PVC
Compatible Wiring	10-18AWG
Characteristic	Water Proof



For Mini Blade Fuse

Part no.	P8041-19
Max. Current	15A
Insulation Resistance at 500V DC	100M Ω Min.
Contact Resistance	5m Ω at 1A DC
Dielectric Strength For 60seconds	AC 1000V min.
Housing Material	Nylon
Compatible Wiring	12-16AWG
Characteristic	Water Proof



AUTOMOTIVE FUSE

INLINE FUSE HOLDERS

For LP Mini Blade Fuse

Part no.	P803D-19
Max. Current	20A
Insulation Resistance at 500V DC	100MΩ Min.
Contact Resistance	5mΩ at 1A DC
Housing Material	Nylon
Compatible Wiring	12-20AWG
Characteristic	Water Resistant



For Glass Fuse (5.2x20mm)

Part no.	P8027A-A1
Size	5.2x20mm
Max. Current	20A
Insulation Resistance at 500V DC	100MΩ Min.
Contact Resistance	5mΩ at 1A DC
Dielectric Strength for 60secs	1500V AC
Housing Material	Nylon
Compatible Wiring	18~22AWG
Characteristic	Screw Type

Note : Available in waterproof too.

For Glass Fuse (6.3x32mm)

Part no.	P8027-A2
Size	26.3x32mm
Max. Current	20A
Insulation Resistance at 500V DC	100MΩ Min
Contact Resistance	5mΩ @ 1A DC
Dielectric Strength for 60secs	1500V AC
Housing Material	Nylon
Compatible Wiring	18~22AWG
Characteristic	Screw type

Note : Available in waterproof too.

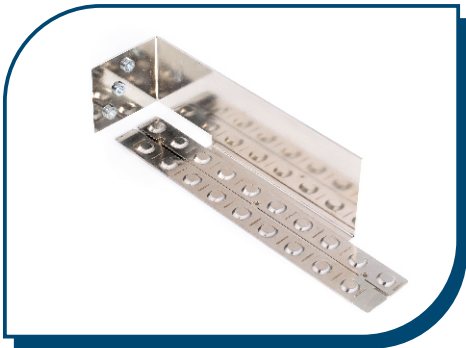


AUTOMOTIVE FUSE

BUS BAR

Current Controller Assy

Part no.	P61B01004
Material	Aluminium 6061
Plating Material	Nickel Coating

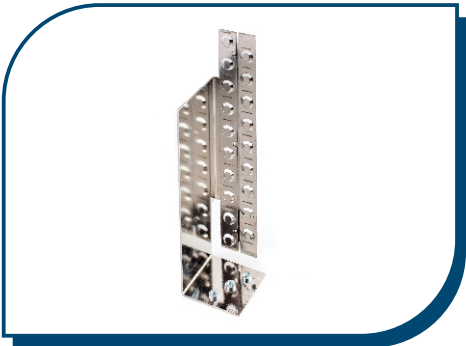


Minus Ary

Part no.	P61B00604
Material	Aluminium 6061
Plating Material	Nickel Coating

Plus Ary

Part no.	P61B00804
Material	Aluminium 6061
Plating Material	Nickel Coating



AUTOMOTIVE FUSE

EV CHARGING CONNECTOR



Vehicle Side Connector



Charging Side Connector

	Power Contacts	Signal Contacts	Ground Contact
Mating Pin Diameter	Ø6.0mm	Ø3.0mm	Ø6.0mm
No of Terminals	4 to 2 Sets	2 No's	1 No
Rated Operating Voltage	250V/450V (50HZ)	22V	
Operating Current	16A/32A/63A	2A	
Contact Impedance	≤5mΩ		
Insulation Resistance	≥2500MΩ		
Pressure Rating	2500V		
Cable Diameter	16A: 2.5mm 32A: 6mm 63A: 10mm	0.75mm	16A: 2.5mm 32A: 6mm
Mating Cycles	≥10000 Cycles		



EV Charging Plug Handle (50A)

Part no.	PEVCS006-20-11-07
Rated Current	50A AC
Rated Voltage	240V/415V AC
Contact Material	Copper Alloy
Plating Material	Silver Plating
Housing Material	Thermoplastic
Standard	IEC-62196-2 (IP44 Rated)
Temperature Range	-25°C TO 40°C

AUTOMOTIVE FUSE

EV CHARGING CONNECTOR

EV Charging Socket, Vehicle Mount (50A)

Part no.	PEVCF003-07-11
Rated Current	50A AC
Rated Voltage	240V/415V AC
Contact Material	Copper Alloy
Plating Material	Silver Plating
Housing Material	Thermoplastic
Standard	IEC-62196-2 (IP44 Rated)
Temperature Range	-25°C TO 40°C

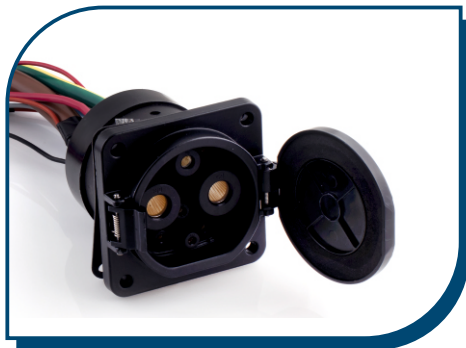


EV Charging Plug Handle (200/250A)

Part no.	TBD
Rated Current	200/250A
Rated Voltage	250/440V AC, 750V DC
Contact Material	Copper Alloy
Plating Material	Silver Plating
Housing Material	Thermoplastic
Standard	GB/T20234-2015 (IP55 Rated)
Temperature Range	-30°C TO 50°

EV Charging Socket, Vehicle Mount (200/250A)

Part no.	TBD
Rated Current	200/250A
Rated Voltage	250/440V AC, 750V DC
Contact Material	Copper Alloy
Plating Material	Silver Plating
Housing Material	Thermoplastic
Standard	GB/T20234-2015 (IP55 Rate)
Temperature Range	-30°C TO 50°C





PROTECTRON ELECTROMECH (P) LTD

#44, 29th Cross, 7th Main Road, Industrial Layout,
Banashankari II Stage, Bengaluru 560070
Karnataka, India

+91-80-2671 6005

protectron@protectron.in

www.protectron.in

