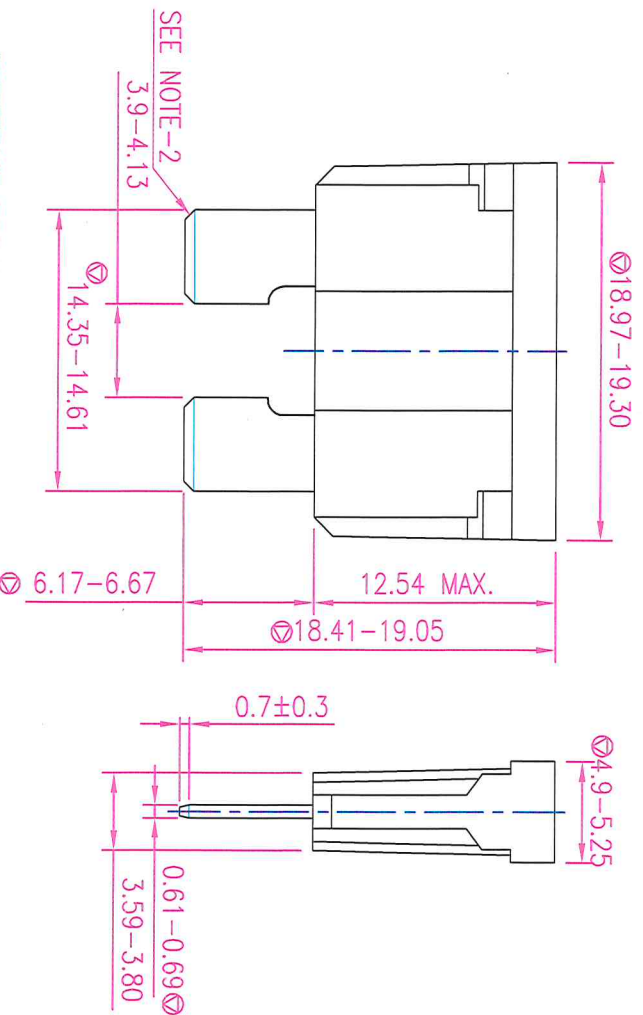


DESC : MIDI BLADE FUSE - STANDARD PLUG IN TYPE

Part No. PTF 200 In-N

REV: A6

$I_n = \text{NOMINAL CURRENT (2A TO 40A)}$



NOMINAL CURRENT RANGE (In)	BODY COLOUR	PART NUMBERS	I ^{2t} VALUE(A ² s) (TYP)
2A	GRAY	PTF 200 2A-N	2.4
3A	VIOLET	PTF 200 3A-N	12.0
4A	PINK	PTF 200 4A-N	17.0
5A	TAN	PTF 200 5A-N	33.0
7.5A	BROWN	PTF 200 7.5A-N	75.0
10A	RED	PTF 200 10A-N	113
15A	BLUE	PTF 200 15A-N	345
20A	YELLOW	PTF 200 20A-N	509
25A	NATURAL	PTF 200 25A-N	960
30A	GREEN	PTF 200 30A-N	1449
35A	BLUE GREEN	PTF 200 35A-N	2211
40A	ORANGE	PTF 200 40A-N	3210

NOTE: THE ABOVE MENTIONED I^{2t} VALUES ARE TYPICAL

NOTE:-

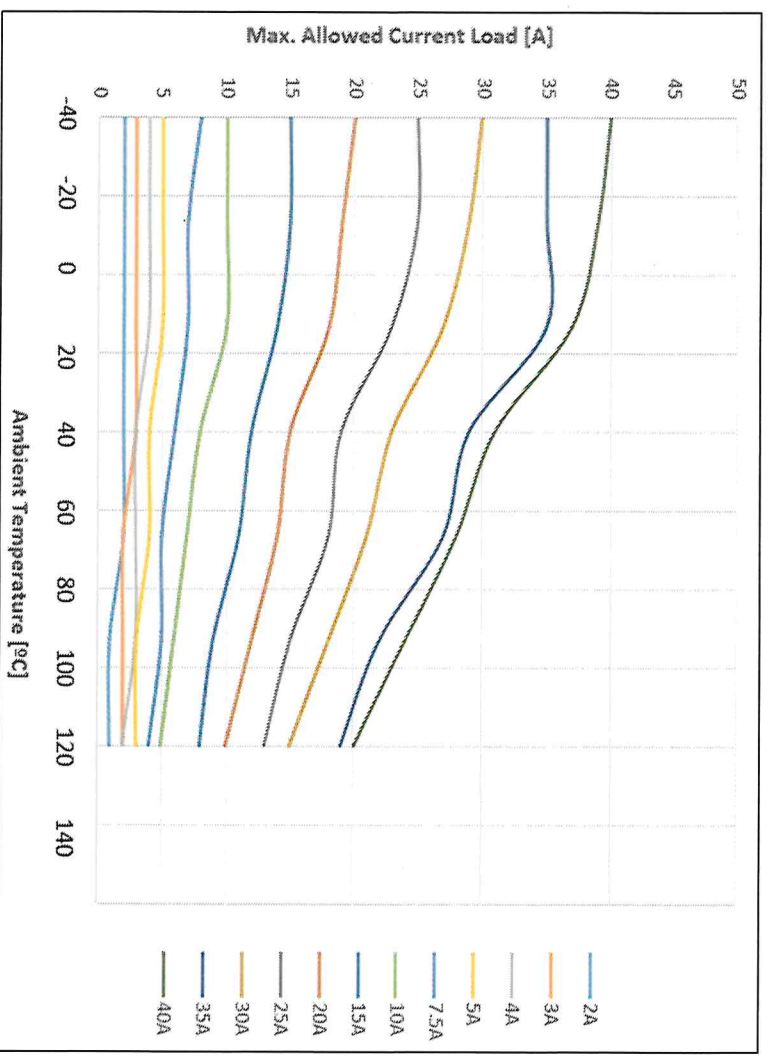
1. Ø CRITICAL DIMENSIONS.
2. ACCEPTABLE BURR LEVEL 'AT MATING AREA : 0.02mm

REFERENCE DESIGN STANDARDS :
 UL 275A STANDARD FOR AUTOMOTIVE BLADE TYPE FUSES.
 RATED VOLTAGE : DC 32V OR LESS
 INTERRUPTING RATING : 1000A @ 32VDC
 OPERATING TEMPERATURE RANGE : -40°C TO +105°C
 UL RECOGNIZED : FILE NO.E228912
 MARKINGS ON THE FUSE SHOULD BE AS FOLLOWS:-
 'AMPERAGE', 'VOLTAGE RATING' AND 'PROTECTOR' (MANUFACTURER)

REV.	ZONE	DESCRIPTION	DRG REV BY	DATE	DOCUMENT CODE :	HEAT TREATMENT	Gen. Tol. ±0.1mm ±0.2	ALL DIMENSIONS ARE IN MM. IF UNLESS OTHERWISE SPECIFIED.
A		ORIGINAL		18.03.2009	4D PTF2 01	--	Surface 1.6 [±] Finish rev	PROTECTOR ELECTROMECH (P) LTD. Bangalore, INDIA.
A1		DIMENSION REVISED		08.10.2010			Scale: NTS	This Document is the property of PROTECTOR ELECTROMECH (P) LTD. It shall not be reproduced or communicated to a third party without prior permission.
A2		UL STANDARD REFERENCE UPDATED		03.10.2012			Sht. Size: A4	DWG according to STD. Sheet: 1 OF 2
A3		OPERATING TEMPERATURE DETAILS ADDED		20.04.2016				
A4		2-20AMPS RATINGS ADDED, I ^{2t} VALUE & TIME-CURRENT CHR. ADDED		27.07.2018				
A5		NOTE 2 ADDED		08.12.2020				
A6		TEMPERATURE RERATING CURVE AND TIME CURRENT CHR. UPDATED		22.01.2022				

APP'D BY: *[Signature]*

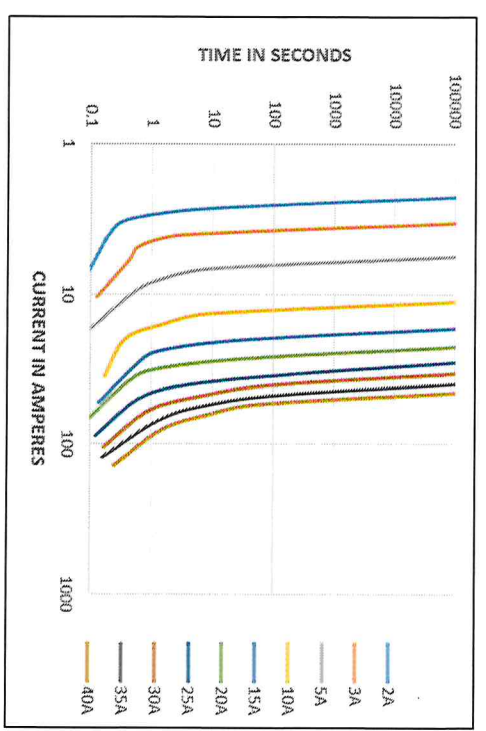
TEMPERATURE RERATING CURVE



ELECTRICAL CHARACTERISTICS:-

% OF AMPERE RATING	AMPERE RATING	OPENING TIME
110%	2-40Amp	100 Hours Min.
135%	2-40Amp	750 msec., Min.; 600sec, Max.
160%	2-40Amp	250 msec., Min.; 50sec, Max.
200%	2-40Amp	150 msec., Min.; 5sec, Max.
350%	2-40Amp	80 msec., Min.; 500msec., Max.
600%	2-40Amp	30 msec., Min.; 100msec., Max.

TIME-CURRENT CHARACTERISTIC CURVES



REV. ZONE DESCRIPTION DRG REV BY DATE

DOCUMENT CODE : **4D PTF2 01**

ALL DIMENSIONS ARE IN MM. IF UNLESS OTHERWISE SPECIFIED.

MATERIAL & FINISH
 BODY-NYLON 66,
 UL 94-V2
 ELEMENT-ZINC MATERIAL,
 TIN PLATED

HEAT TREATMENT

ENG APP'D : *[Signature]*

Gen. Tol. ±0.1mm
 ±0.2"

Surface Finish 1.6
 Ra

Scale: NTS

Sht. Size: A4

PROTECTORON ELECTROMECH (P) LTD.
 Bangalore, INDIA.

This Document is the property of PROTECTORON ELECTROMECH (P) LTD. it shall not be reproduced or communicated to a third party without prior permission.

DWG according to STD. Sheet: 2 OF 2

DATE : 18.03.2009

APP'D BY: *[Signature]*



DWG according to STD. Sheet: 2 OF 2