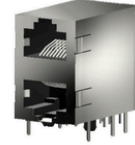




DESCRIPTION : MODULAR JACK, SIDE ENTRY, SHIELDED, DOUBLE DECKER

PART NO: PSY017PXXPXC-XD

RoHS



PHYSICAL DATA

MATERIAL :

INSULATOR BODY : PBT UL 94V-0, BLACK COLOUR

CONTACT, FLAT PIN : PHOSPHOR BRONZE

ELECTRICAL DATA

VOLTAGE RATING : 500 VAC/1 minute

CURRENT RATING : 1.5A

CONTACT RESISTANCE : 50m OHMS max.

INSULATION RESISTANCE : 500M OHMS MIN.

MECHANICAL DATA

MECHANICAL LIFE : 500 CYCLES Min.

ENVIRONMENTAL DATA

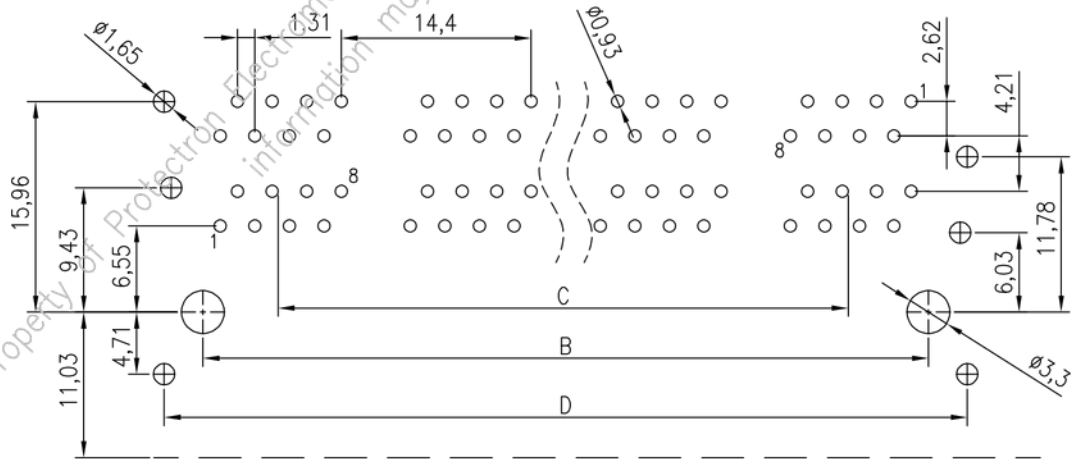
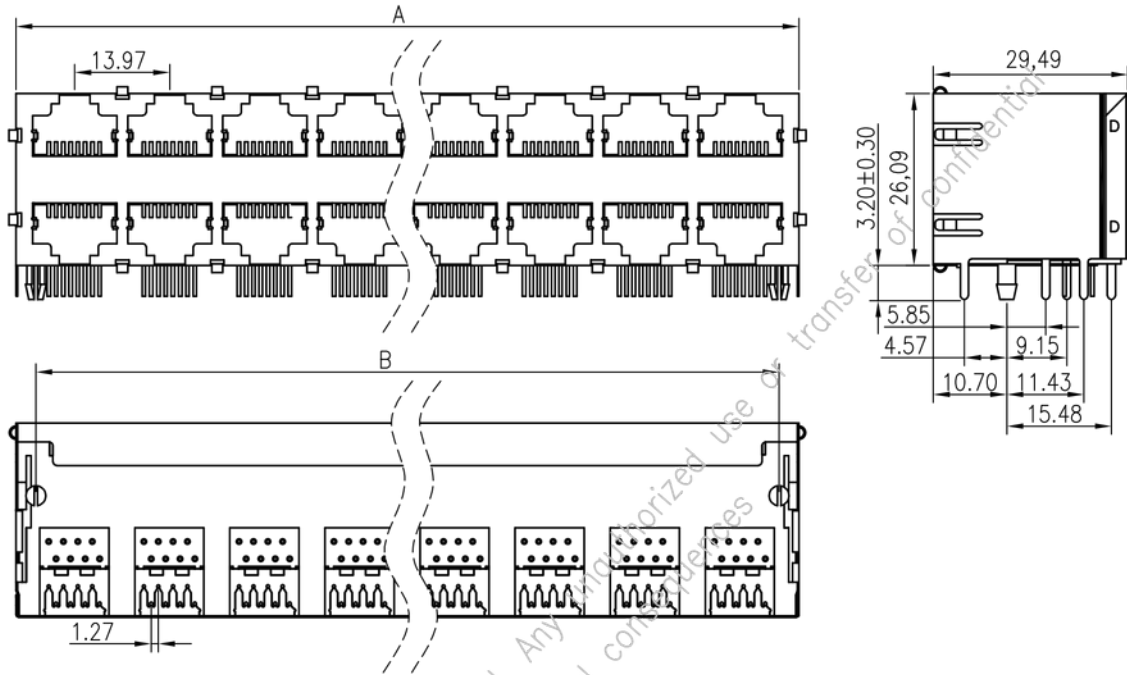
OPERATING TEMP. RANGE : -40°C TO +70°C

DIMENSIONS	NO. OF PORTS					
	2	4	6	8	12	16
A	17.2	31.2	45.2	59.2	87.2	115.2
B	11.43	25.40	39.37	53.34	81.28	109.22
C	-	13.98	27.96	41.94	69.90	97.86
D	17.00	30.98	44.95	58.92	86.86	114.80



DESCRIPTION MODULAR JACK, SIDE ENTRY, SHIELDED, DOUBLE DECKER

PART NO: PSY017PXXPXC-XD



RECOMMENDED P.C.B LAYOUT

Projection:



Scale: NTS

Sht. Size: A4

Gen. Tol.: $\pm 0.35\text{mm}$
 $\pm 2'$

ALL DIMENSIONS ARE IN MM.
IF UNLESS OTHERWISE SPECIFIED.