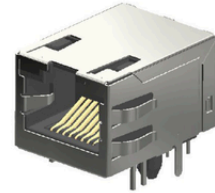




DESCRIPTION : MODULAR JACK SIDE ENTRY, SINGLE PORT,
SHIELDED, LONG BODY WITH GROUND TABS REVERSE PANEL

PART NO: PSY001PL-10P8C-6



PHYSICAL DATA

MATERIAL

INSULATOR BODY : PBT UL 94V-0, BLACK COLOUR
CONTACT : COPPER ALLOY, GOLD PLATED

ELECTRICAL DATA

RATED CURRENT : 1.5A
INSULATION RESISTANCE : 1000M Ω Min.
CONTACT RESISTANCE : 50m Ω Max.
VOLTAGE RATING : 125VAC Max.

MECHANICAL DATA

MECHANICAL LIFE : 500 CYCLES min

ENVIRONMENTAL DATA

TEMPERATURE RANGE : -40° TO +85°C

