

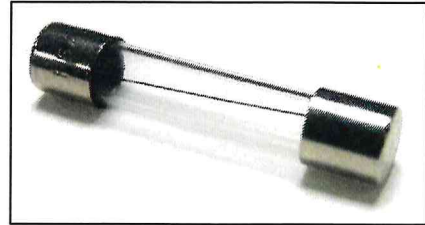


PROTECTRON ELECTROMECH (P) LTD

DESCRIPTION : 5.2 x 20, GLASS CARTRIDGE TIME DELAY FUSE

PART NO: PST In

APPROVALS:



SPECIFICATIONS	: IEC 60127-2, SHEET-III
RATED VOLTAGE	: 250 V
BREAKING CAPACITY	: 35 A, AC CURRENT
OPERATING TEMPERATURE	: -55°C TO +125°C
CAP	: BRASS, NICKEL PLATED
BODY	: GLASS BODY

MARKINGS ON THE FUSE CAP SHOULD BE AS FOLLOWS:-

TYPE OF FUSE (T), FUSE RATING, RATED VOLTAGE (250V),
BREAKING CAPACITY (L) & COMPANY'S IDENTIFICATION

NOTE:

UL APPROVAL-1A TO 6.3A, 8A AND 10A

ADDITIONAL TEST(FOR<10A) AT 1.5In SHALL NOT FUSE WITHIN 1HOUR

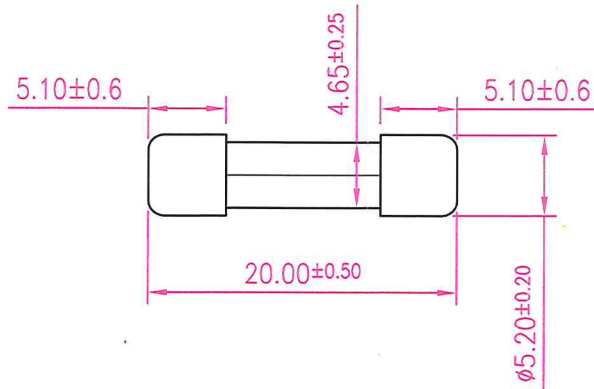
NOMINAL CURRENT (In)	2.1 In MAX.	2.75 In		4 In		10 In	
		MIN.	MAX.	MIN.	MAX.	MIN.	MAX.
32mA TO 100 mA	2 MINUTES	200 mSec	10 Sec	40 mSec	3 Sec	10 mSec	300 mSec
>100mA TO 7.5A&9A	2 MINUTES	600 mSec	10 Sec	150 mSec	3 Sec	20 mSec	300 mSec
8 & 10A	2 MINUTES	500 mSec	10 Sec	150 mSec	3 Sec	20 mSec	300 mSec
>10A	2 MINUTES	600 mSec	10 Sec	150 mSec	3 Sec	20 mSec	300 mSec



PROTECTRON ELECTROMECH (P) LTD

DESCRIPTION : 5.2 x 20, GLASS CARTRIDGE TIME DELAY FUSE

PART NO: PST In



NOTE:FOR MANUAL ASSEMBLY AND OUT SIDE SOLDERING TOTAL LENGTH $20.0+1.0/-0.5$ mm

SL.NO	PEPL PART NUMBER	NOMINAL CURRENT RANGE (In)	VOLTAGE DROP DC (mV Max.)
1	PST 0.1A	100 mA	2500
2	PST 0.125A	125 mA	2000
3	PST 0.15A	150 mA	1900
4	PST 0.16A	160 mA	1900
5	PST 0.2A	200 mA	1500
6	PST 0.25A	250 mA	1300
7	PST 0.3A	300 mA	1100
8	PST 0.315A	315 mA	1100
9	PST 0.35A	350 mA	1100
10	PST 0.4A	400 mA	1000
11	PST 0.5A	500 mA	900
12	PST 0.6A	600 mA	300
13	PST 0.63A	630 mA	300
14	PST 0.7A	700 mA	250
15	PST 0.75A	750 mA	250
16	PST 0.8A	800 mA	250
17	PST 1A	1 A	150
18	PST 1.25A	1.25 A	150
19	PST 1.4A	1.4 A	150
20	PST 1.5A	1.5 A	150

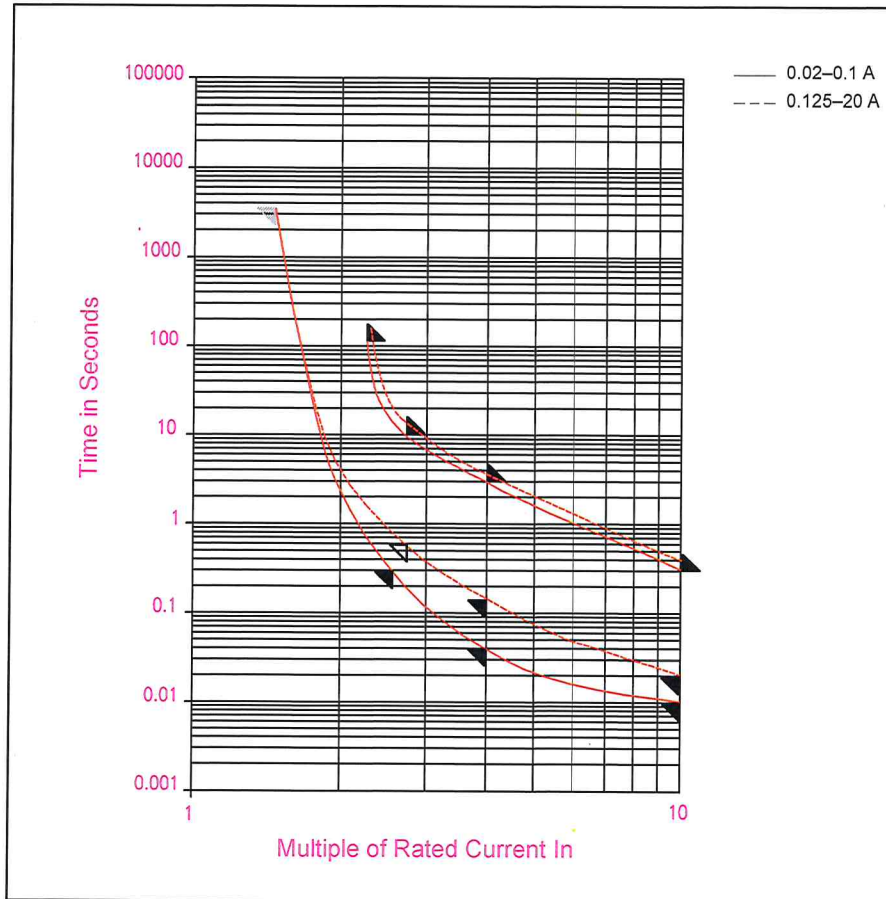
SL.NO	PEPL PART NUMBER	NOMINAL CURRENT RANGE (In)	VOLTAGE DROP DC (mV Max.)
21	PST 1.6A	1.6 A	150
22	PST 2A	2 A	150
23	PST 2.5A	2.5 A	120
24	PST 3A	3 A	100
25	PST 3.15A	3.15 A	100
26	PST 3.5A	3.5 A	100
27	PST 4A	4 A	100
28	PST 5A	5 A	100
29	PST 6A	6 A	100
30	PST 6.3A	6.3 A	100
31	PST 7A	7 A	100
32	PST 8A	8 A	100
33	PST 9A	9 A	100
34	PST 10A	10 A	100
35	PST 12A	12 A	100
36	PST 15A	15 A	100
37	PST 16A	16 A	100
38	PST 20A	20 A	100
39	PST 30A	30 A	100



PROTECTRON ELECTROMECH (P) LTD

DESCRIPTION : 5.2 x 20, GLASS CARTRIDGE TIME DELAY FUSE

PART NO: PST In



ORDERING INFORMATION

PST... mA($I_n \leq 800\text{mA}$) OR
PST... A($I_n \geq 1\text{A}$)

A7	OPERATING TEMPERATURE ADDED	PRARTHANA	15.06.2022	<i>[Signature]</i>
A6	CHARACTERISTIC CURVE ADDED	RAMYA	04.03.2019	SUJATHA
A5	MARKING OF TYPE OF FUSE CHANGED FROM 'F' TO 'T'	MADHUSHREE	21.12.2017	SACHIN
A4	NOTE ADDED	MADHUSHREE	08.11.2017	SACHIN
A3	BLOWING CHARACTERISTICS REVISED	VENILA	28.11.2015	SACHIN V.RAMANI
A2	Isqt & 3.5A CURRENT RATING IS INCLUDED	RAVISH.S	27.10.2010	
A1	MARKING INFORMATION IS ADDED & DRAWING IS REDRAWN	SAMSON	03.03.2001	
A	ORIGINAL	SAMSON	17.07.1999	

REV.	DESCRIPTION	DRN. BY	DATE	CK'ED BY	APP'D BY
------	-------------	---------	------	----------	----------

Projection:



Scale: NTS

Sht. Size: A4

Gen. Tol.: $\pm 0.1\text{mm}$
 $\pm 0.2^\circ$

ALL DIMENSIONS ARE IN MM.
IF UNLESS OTHERWISE SPECIFIED.

<http://www.protectron.in>

protectron@protectron.in