



**DESCRIPTION** : SURFACE MOUNT CHIP FUSES

**PART NO:** PSM12 In  
(REFER TABLE)

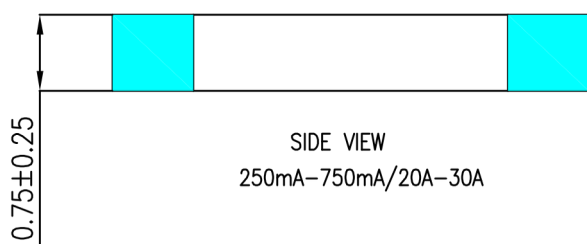
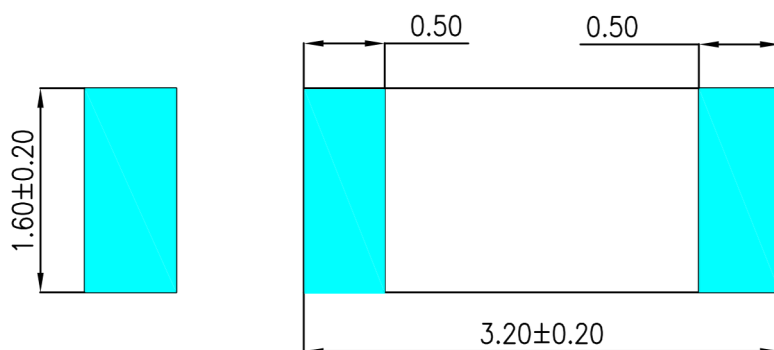
RoHS



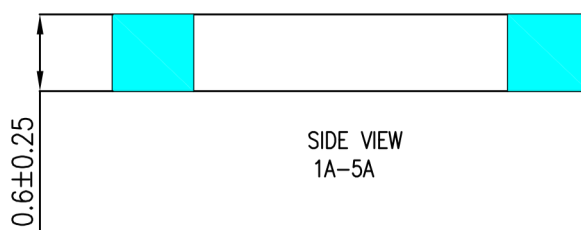
### 1. FEATURES

- (a) Rapid interruption of excessive current
- (b) Compatible with reflow and wave solder
- (c) Ceramic and glass construction
- (d) One time positive disconnect
- (e) Lead free and Halogen free material

### 2. PRODUCTION DIMENSIONS (MILLIMETER):



SIDE VIEW  
250mA-750mA/20A-30A



SIDE VIEW  
1A-5A

NOTE : Specification subject to change without notice.



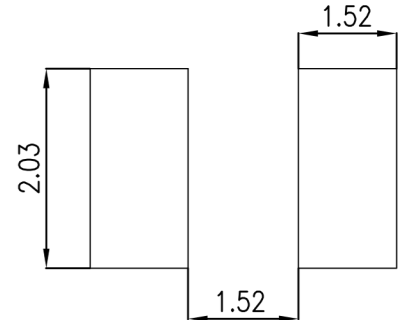
**DESCRIPTION : SURFACE MOUNT CHIP FUSES**

**PART NO: PSM12 In**  
**(REFER TABLE)**

**3. TIME-CURRENT CHARACTERISTICS:**

NOMINAL CURRENT (In)	1In MIN	2.5In MAX	3.5In MAX
250mA-5A	4 HOURS	5 SEC	-
7A-30A	4 HOURS	-	5 sec

**5. PAD LAYOUT**

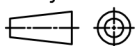


**4. ELECTRICAL CHARACTERISTICS**

RATED CURRENT	RATED VOLTAGE	BREAKING CAPACITY	TYPICAL COLD RESISTANCE (OHMS)	TYPICAL VOLTAGE DROP (mV)	TYPICAL PRE-ARCING I <sup>2</sup> t(A <sup>2</sup> SEC) DC
0.25A	72/63/32/24V	50A	3608	1407	0.0004
0.375A	72/63/32/24V	50A	1882	718	0.0008
0.50A	72/63/32/24V	50A	1028	650	0.0022
0.75A	72/63/32/24V	50A	601	616	0.0057
1A	72/63/32/24V	50A	490	510	0.10
1.5A	72/63/32/24V	50A	240	367	0.15
2A	72/63/32/24V	50A	144	316	0.41
2.5A	72/63/32/24V	50A	86	240	0.65
3A	72/63/32/24V	50A	53	187	1.39
3.5A	72/63/32/24V	50A	40	180	1.68
4A	72/63/32/24V	50A	35	173	1.73
4.5A	32/24V	150A	30	164	2.62
5A	32/24V	150A	25	141	2.89
7A	32/24V	150A	12	140	12.5
8A	32/24V	150A	8.5	110	14.0
10A	32/24V	150A	6.8	100	20.0
12A	32/24V	150A	5.0	85	11.5
15A	32/24V	150A	3.9	78	16.5
20A	32/24V	150A	1.8	60	47.17
25A	32/24V	150A	1.6	90	60
30A	32/24V	150A	1.3	90	100
40A	32/24V	150A	0.85	90	60
50A	32/24V	150A	0.70	90	100

NOTE : Specification subject to change without notice.

Projection:



Scale: NTS

Sht. Size: A4

Gen. Tol.: ±0.25mm  
±1'

ALL DIMENSIONS ARE IN MM.  
IF UNLESS OTHERWISE SPECIFIED.