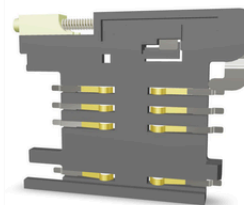


DESCRIPTION : SIM CARD HOLDER, 6 CONTACTS, WITHOUT PEGS WITH SWITCH, SMD TYPE, PUSH BUTTON TYPE, TAPE & REEL PACKING.

PART NO: PSIMC9-06-0S-6R

RoHS



PHYSICAL

INSULATION	
MATERIAL	: THERMOPLASTIC POLYESTER
FLAMMABILITY	: UL94V-0
COLOR	: BLACK
CONTACT MATERIAL	: PHOSPHOR BRONZE, SELECTIVE GOLD PLATED

ELECTRICAL

CONTACT RESISTANCE	: 60m Ω TYPICAL, 100m Ω MAX
INSULATION RESISTANCE	: 1000M Ω MIN AT 500V DC

MECHANICAL DATA

MECHANICAL LIFE	: 10,000 CYCLES
-----------------	-----------------

ENVIRONMENTAL DATA

TEMPERATURE RANGE	: -25°C TO +85°C
-------------------	------------------

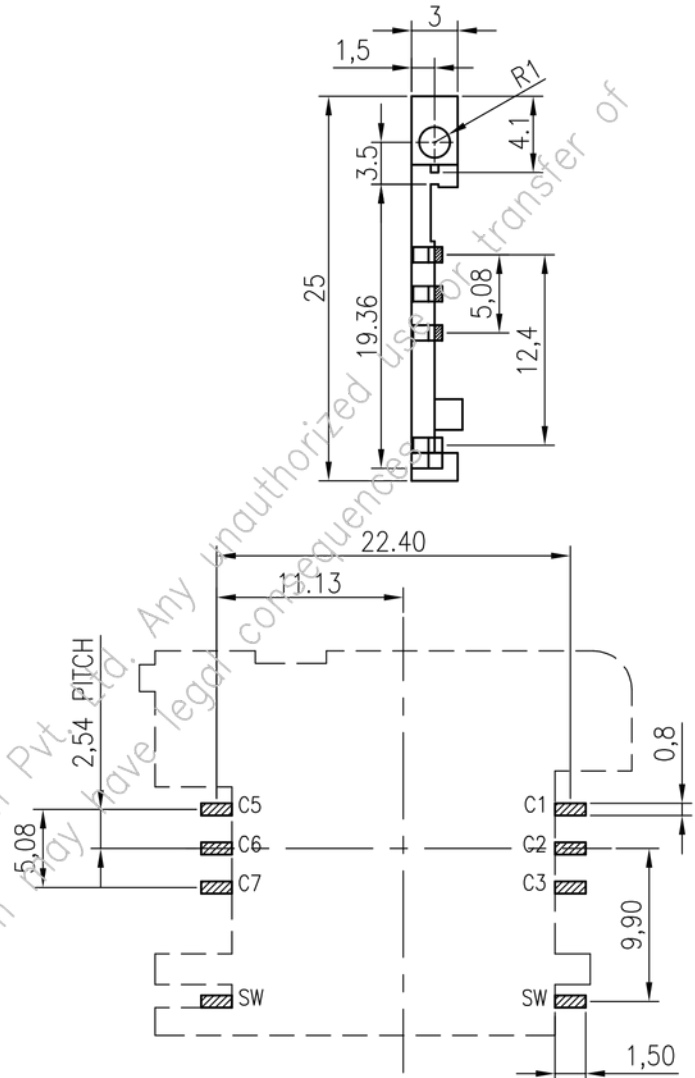
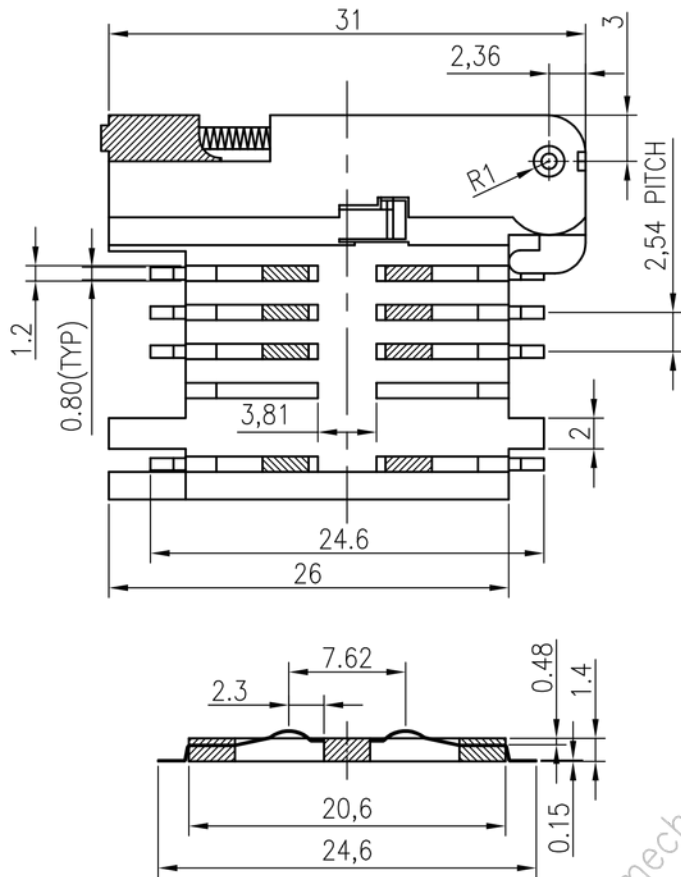
SOLDERABILITY

WAVE	: NOT APPLICABLE
IR REFLOW OVEN	: 230°C, 10 SEC. MAX



DESCRIPTION : SIM CARD HOLDER, 6 CONTACTS, WITHOUT PEGS WITH SWITCH, SMD TYPE, PUSH BUTTON TYPE, TAPE & REEL PACKING.

PART NO: PSIMC9-06-0S-6R



RECOMMENDED P.C.B LAYOUT
(TOLERANCE ± 0.05)

ORDERING INFORMATION

PSIMC9-06-0S-6R

TAPE & REEL PACKING

Projection:



Scale: NTS

Sht. Size: A4

Gen. Tol.: $\pm 0.5\text{mm}$
 $\pm 2'$

ALL DIMENSIONS ARE IN MM.
IF UNLESS OTHERWISE SPECIFIED.