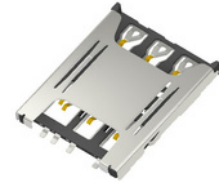


**DESCRIPTION** : NANO SIMCARD HOLDER, WITH PUSH-PULL TYPE  
6PIN GOLD PLATED.

**PART NO:** PSIMC-45-06-PPS-1A0



## PHYSICAL DATA

INSULATION MATERIAL	:	HI- TEMP, THERMOPLASTIC
TERMINAL SHELL	:	COPPER ALLOY
PLATING	:	SUS
CONTCAT SHELL	:	1 $\mu$ GOLD PLATED
	:	TRAY PACKING WITHOUT CAP

## ELECTRICAL DATA

CURRENT RATING	:	0.5A AC/DC
INSULATION RESISTANCE	:	100M OHMS MIN.
CONTACT RESISTANCE	:	100m OHMS MAX.
VOLTAGE RATING	:	30V AC/DC
WITHSTANDING VOLTAGE	:	500V DC FOR 1 MIN.

## MECHANICAL DATA

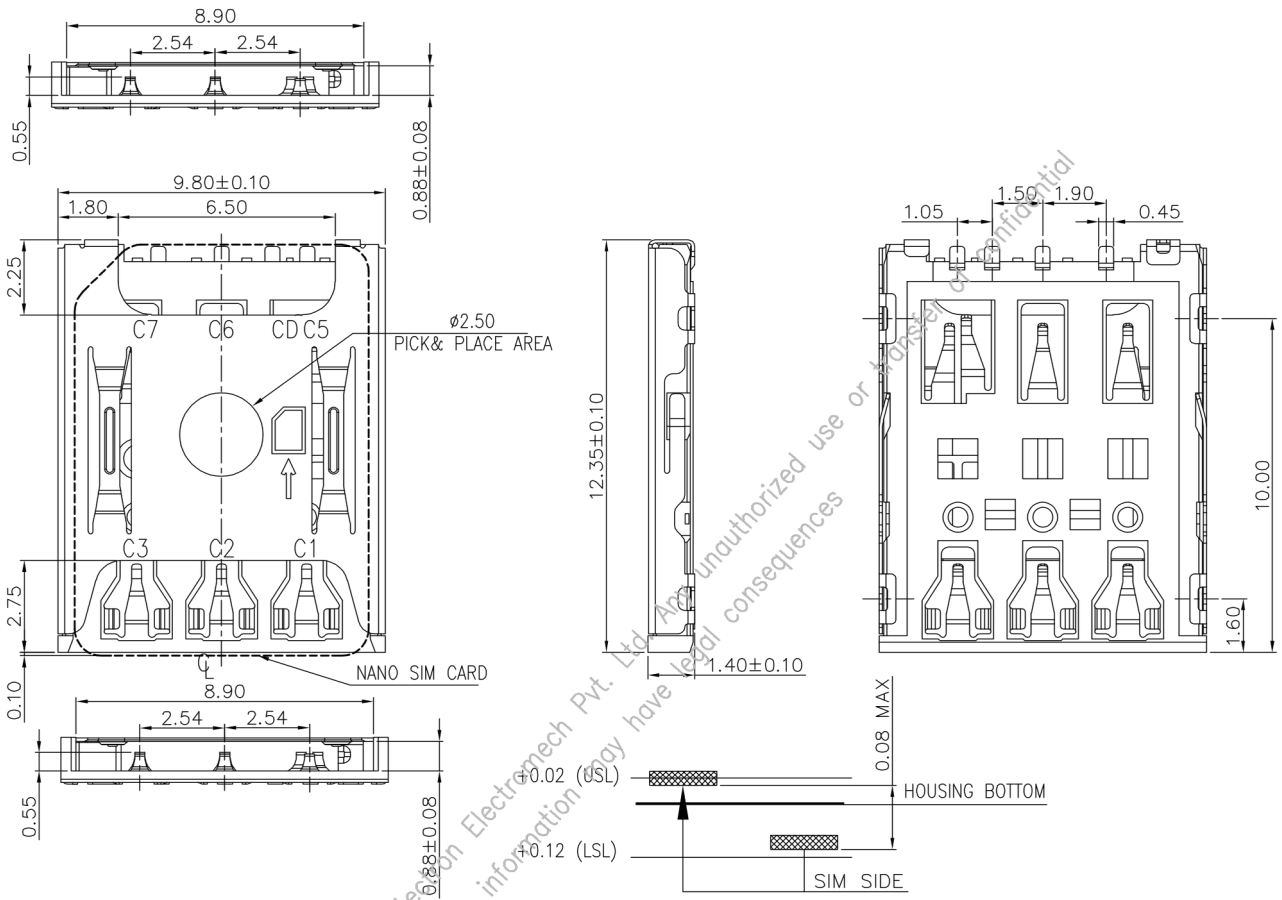
DURABILITY	:	5000CYCLES
MATING FORCE	:	10N MAX
UNMATING FORCE	:	0.5N MIN
COPLANARITY	:	BEFORE IR 0.08mm MAX AFTER IR 0.10mm MAX

## ENVIRONMENT DATA

TEMPERATURE RANGE	:	-40°C to +85°C
SOLDERING TEMPERATURE	:	250 $\pm$ 5°, 10SEC
AMBIDENT HUMIDITY RANGE	:	80% R.H MAX



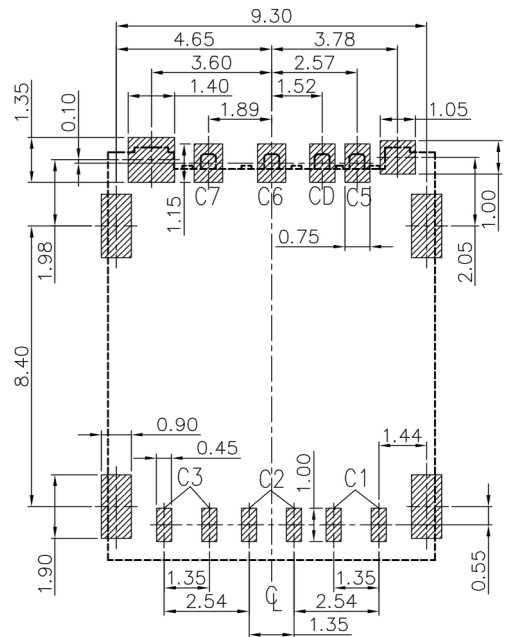
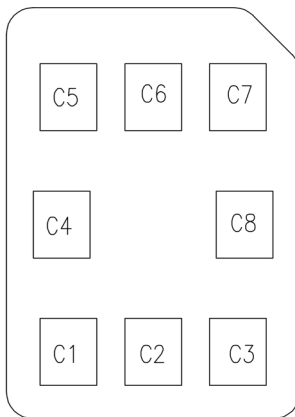
**DESCRIPTION : NANO SIMCARD HOLDER,WITH PUSH-PULL TYPE PART NO:PSIMC-45-06-PPS-1A0**  
**6PIN GOLD PLATED.**



COPLANARIYT(Signal pin & shell)

Nano SIM Circuit Description:

PIN No.	FUNCTION
C1	VCC
C2	RST
C3	CLK
C4	RESERVED
C5	GND
C6	VPP
C7	I/O
C8	RESERVED



RECOMMENDED PCB LAYOUT  
GENERAL TOLERANCE: ±0.05