



PROTECTRON ELECTROMECH (P) LTD

DESCRIPTION : FEMALE HEADER 2.0mm PITCH, SMT, WITHOUT ALIGNMENT

PART NO: P9415DXX-21

RoHS



PHYSICAL

INSULATOR : POLYESTER, UL94V-0
CONTACT : PHOSPHOR BRONZE, GOLD PLATED

ELECTRICAL

CURRENT RATING : 1.5A
CONTACT RESISTANCE : 20m Ω MAX
INSULATION RESISTANCE : 1000M Ω MIN
DIELECTRIC VOLTAGE : 500V AC FOR ONE MINUTE

ENVIRONMENTAL DATA

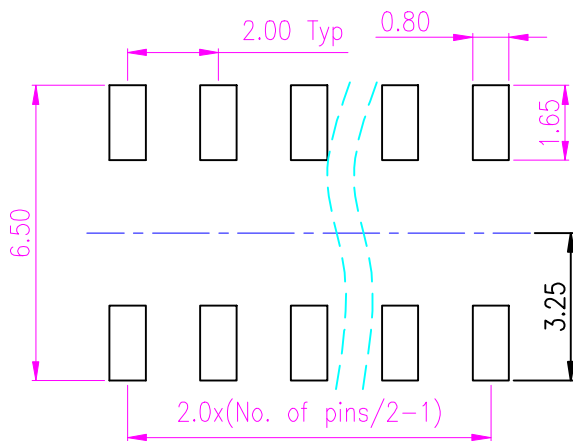
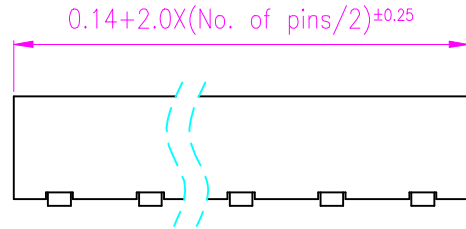
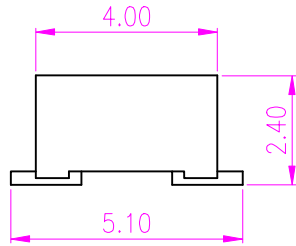
TEMPERATURE RANGE : -40° TO +105° C
SOLDERING TEMP RANGE : 260°C FOR 5SEC



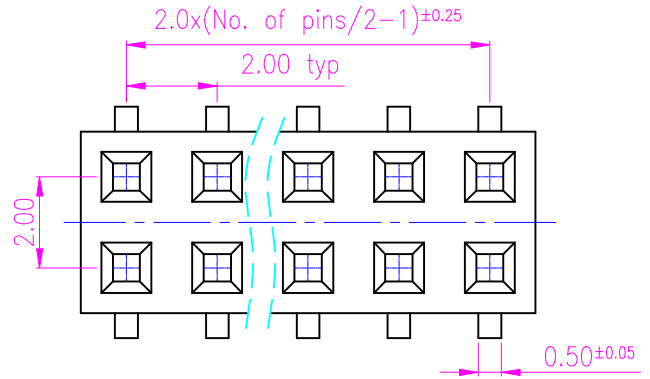
PROTECTRON ELECTROMECH (P) LTD

DESCRIPTION : FEMALE HEADER 2.0mm PITCH, SMT, WITHOUT ALIGNMENT

PART NO: P9415DXX-21



RECOMMENDED PCB LAYOUT
LAYOUT TOL ±0.05mm



MATES WITH
P9113,P9114
P9115,P9118

ORDERING INFORMATION

P9413DXX-21

NO.OF CONTACTS
(04-80)

A	ORIGINAL	LOKANATH	25.02.2010	SACHIN	V.RAMANI
REV.	DESCRIPTION	BY	DATE	CK'ED BY	APP'D BY

Projection: 	Scale: NTS	Sht. Size: A4	Gen. Tol.: ±0.5mm ±2'	ALL DIMENSIONS ARE IN MM. IF UNLESS OTHERWISE SPECIFIED.
-----------------	------------	---------------	--------------------------	---