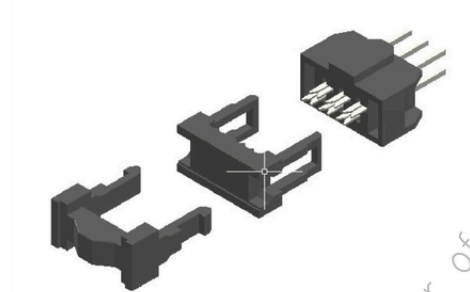




DESCRIPTION : 2.54mm PITCH DIP PLUG SOCKET

PART NO: P9403IDSA-XX-24

RoHS



PHYSICAL

INSULATION

HOUSING

TERMINAL

FLAMMABILITY

: THERMOPLASTIC
: COPPER ALLOY, SELECTIVE GOLD PLATED
: UL94V-0

ELECTRICAL

CURRENT RATING

INSULATION RESISTANCE

DIELECTRIC WITHSTANDING

CONTACT RESISTANCE

: 3A
: 5000M OHMS MIN
: 1000V AC/MIN
: 20m OHMS MAX

ENVIRONMENTAL DATA

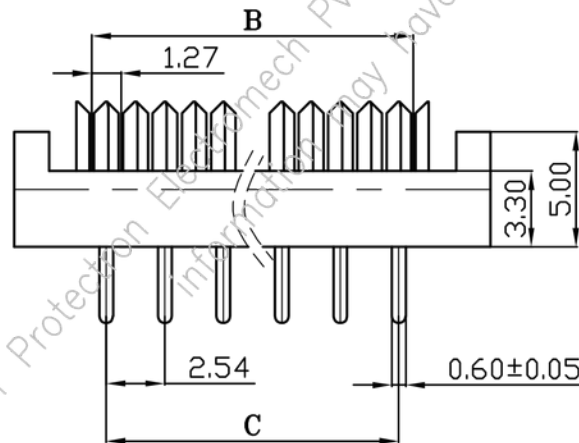
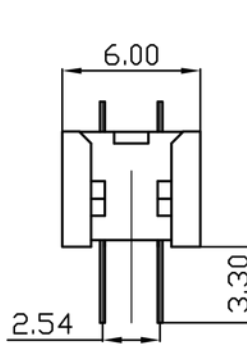
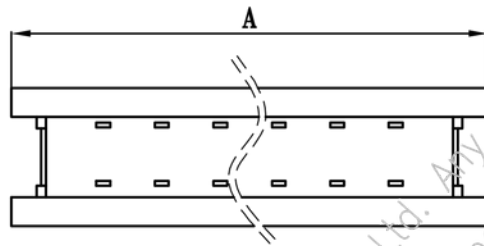
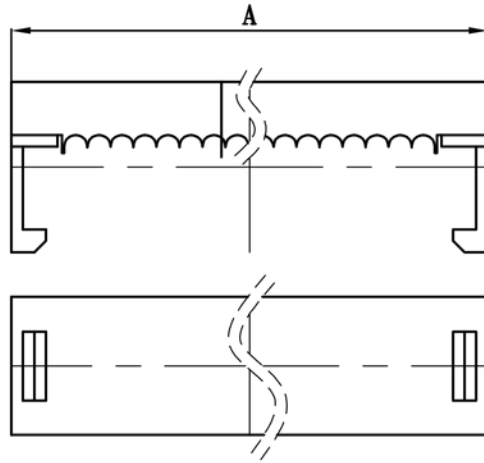
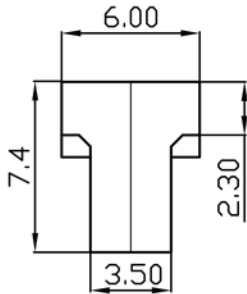
TEMPERATURE RANGE

: -40°C TO +105°C

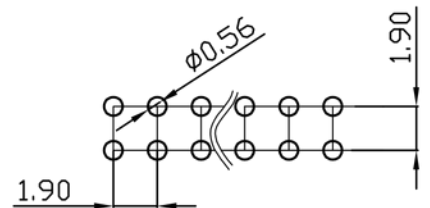


DESCRIPTION : 2.54mm PITCH DIP PLUG SOCKET

PART NO: P9403IDSA-XX-24



PIN	DIMENSIONS		
	A	B	C
06	13.07	6.35	5.08
08	15.61	8.89	7.62
10	18.15	11.43	10.16
12	20.69	13.97	12.70
14	23.23	16.51	15.24
16	25.77	19.05	17.78
18	28.31	21.59	20.32
20	30.85	24.13	22.86
24	35.93	29.21	27.94
26	38.47	31.75	30.48
30	43.55	36.83	35.56
34	48.63	41.91	40.64
36	51.17	44.45	43.18
40	56.25	49.53	48.26
50	68.95	62.23	60.96
60	81.65	74.93	73.66
64	86.73	80.01	78.74



RECOMMENDED P.C.B LAYOUT
LAYOUT TOLERANCE=±0.05mm

Projection:

Scale: NTS

Sht. Size: A4

Gen. Tol.: ±0.2

ALL DIMENSIONS ARE IN MM.
IF UNLESS OTHERWISE SPECIFIED.