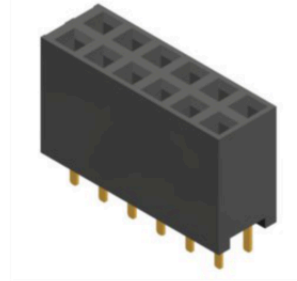


DESCRIPTION : FEMALE HEADER 2.54mm PITCH, DUAL ROW,
STRAIGHT, PROFILE=5.7mm.

PART NO: P9403AXXXXX



PHYSICAL DATA

INSULATION
MATERIAL : GLASS FILLED POLYESTER
FLAMMABILITY : UL94V-0
COLOR : BLACK
CONTACT MATERIAL : COPPER ALLOY
FINISH : REFER TABLE
PACKAGING TYPE : STANDARD PACKING

ELECTRICAL DATA

CURRENT RATING : 3A
INSULATION RESISTANCE : 1000M OHMS MIN
DIELECTRIC WITHSTANDING : 550V AC/MIN
CONTACT RESISTANCE : 20m OHMS MAX

MECHANICAL DATA

INSERTION FORCE : <300g max.
EXTRACTION FORCE : >30g min.
MECHANICAL LIFE : 200 CYCLES MIN.

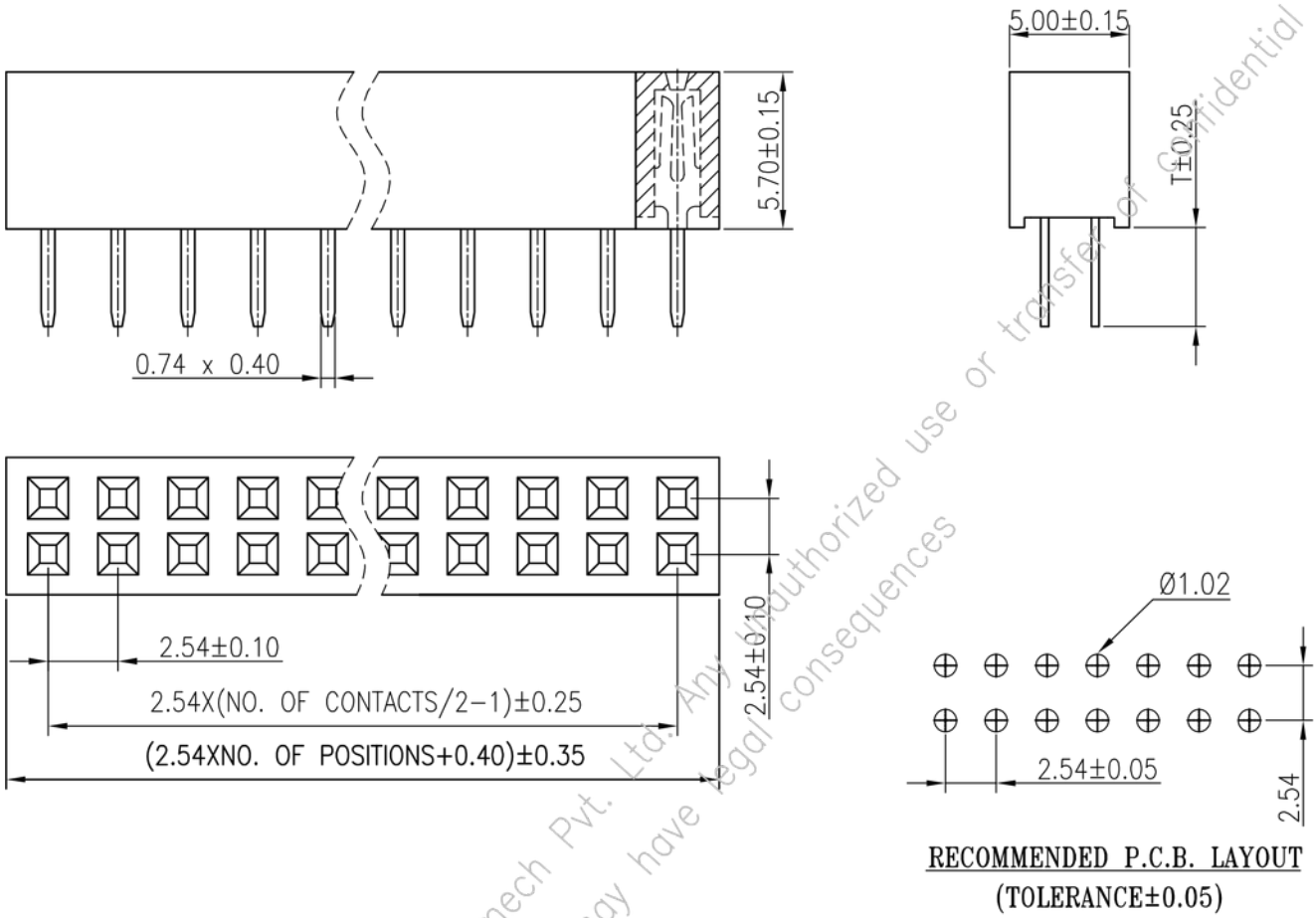
ENVIRONMENTAL DATA

TEMPERATURE RANGE : -40°C TO +105°C
SOLDERING TEMPERATURE : 245°C±5', 5SEC



DESCRIPTION : FEMALE HEADER 2.54mm PITCH, DUAL ROW,
STRAIGHT, PROFILE=5.7mm.

PART NO: P9403AXXXXX



MATES WITH

P9103,P9104
P9105,P9108

ORDERING INFORMATION

P9403AXXXXX

NO. OF CONTACTS
(04-80)

X=T	TAIL OPTION LENGTH
-	3.20mm
1	3.00mm
2	5.80mm
3	10.8mm

XX	PLATING
21	GOLD FLASH
22	0.75µ GOLD
23	GOLD FLASH ON CONTACT SIDE & TIN ON SOLDER SIDE
24	5µ TIN

Projection:



Scale: NTS

Sht. Size: A4

Gen. Tol.: ±0.35mm

ALL DIMENSIONS ARE IN MM.
IF UNLESS OTHERWISE SPECIFIED.