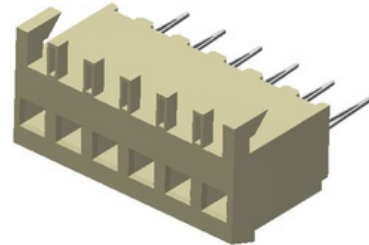




DESCRIPTION : 2.54mm PITCH P.C BOARD CONNECTOR, TOP ENTRY
ROHS COMPLIANT

PART NO:P9075S29-19-X

RoHS



PHYSICAL DATA

| | |
|--------------|---------------------|
| MATERIAL | |
| INSULATION | : NYLON 66/NYLON 6T |
| FLAMMABILITY | : UL94V-2 |
| CONTACT | : COPPER ALLOY |
| FINISH | : TIN PLATING |
| PACKING | : TRAY PACKING |

ELECTRICAL DATA

| | |
|-------------------------|------------------------|
| CURRENT RATING | : 3A AC, DC |
| INSULATION RESISTANCE | : 5000M Ω Min. |
| DIELECTRIC WITHSTANDING | : 1500VAC FOR 1 MINUTE |
| CONTACT RESISTANCE | : 20m Ω Max. |

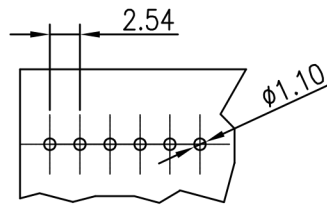
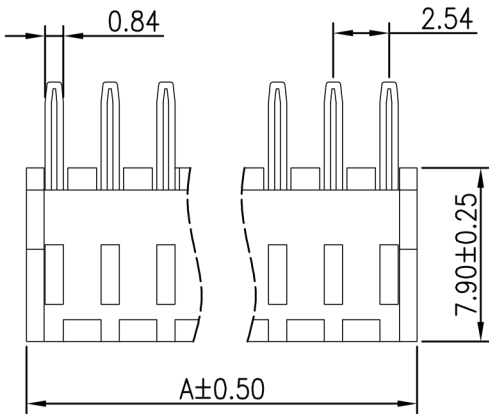
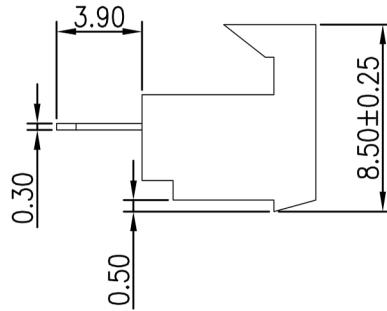
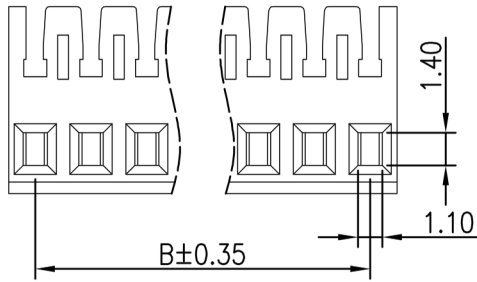
ENVIRONMENTAL DATA

| | |
|-------------------|-------------------|
| TEMPERATURE RANGE | : -40°C TO +105°C |
|-------------------|-------------------|



DESCRIPTION : 2.54mm PITCH P.C BOARD CONNECTOR, TOP ENTRY
ROHS COMPLIANT

PART NO: P9075S29-19-X



Recommended PCB Layout
(PCB tolerance ±0.10)

| Circuits | DIMENSION | |
|----------|-----------|-------|
| | A | B |
| 2 | 5.08 | 2.54 |
| 3 | 7.62 | 5.08 |
| 4 | 10.16 | 7.62 |
| 5 | 12.70 | 10.16 |
| 6 | 15.24 | 12.70 |
| 7 | 17.78 | 15.24 |
| 8 | 20.32 | 17.78 |
| 9 | 22.86 | 20.32 |
| 10 | 25.40 | 22.86 |
| 11 | 27.94 | 25.40 |
| 12 | 30.48 | 27.94 |
| 13 | 33.02 | 30.48 |
| 14 | 35.56 | 33.02 |
| 15 | 38.10 | 35.56 |
| 16 | 40.64 | 38.10 |
| 17 | 43.18 | 40.64 |
| 18 | 45.72 | 43.18 |
| 19 | 48.26 | 45.72 |
| 20 | 50.80 | 48.26 |
| 21 | 53.34 | 50.80 |
| 22 | 55.88 | 53.34 |
| 23 | 58.42 | 55.88 |
| 24 | 60.96 | 58.42 |
| 25 | 63.50 | 60.96 |

ORDERING INFORMATION

P9075S29-19-X

NO OF CONTACTS
(2-25)

Projection:



Scale: NTS

Sht. Size: A4

Gen. Tol.: ±0.35mm

ALL DIMENSIONS ARE IN MM.
IF UNLESS OTHERWISE SPECIFIED.