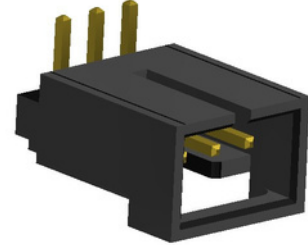




DESCRIPTION : WAFER 2.54mm PITCH, RIGHT ANGLE, SHROUDED
CRIMP TYPE

PART NO: P9072R20-12-X
X=NO. OF WAYS

RoHS



PHYSICAL DATA

INSULATION	
MATERIAL	: PBT
FLAMMABILITY	: UL94V-0
COLOR	: BLACK COLOR
CRIMP TERMINAL	: COPPER ALLOY, GOLD PLATED
PACKAGING TYPE	: STANDARD

ELECTRICAL DATA

CURRENT RATING	: 2.5A
VOLTAGE RATING	: 250V AC/DC
CONTACT RESISTANCE	: 20m OHMS MAX
INSULATION RESISTANCE	: 1000M OHMS MIN
DIELECTRIC WITHSTAND	: 600 AC/MIN

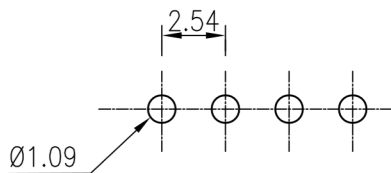
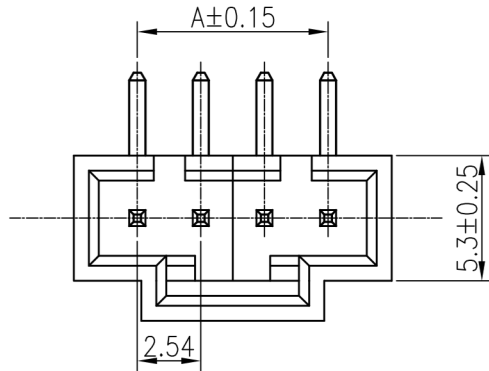
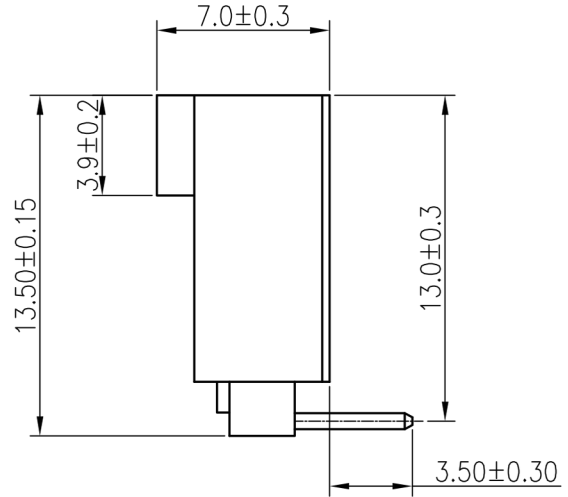
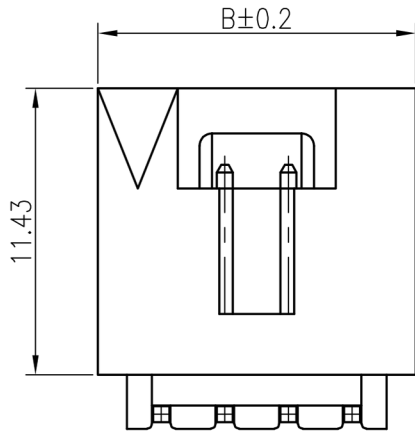
ENVIRONMENTAL DATA

TEMPERATURE RANGE	: -25° TO +85° C
PROCESS RATING	: 180°C FOR 5SEC



DESCRIPTION : WAFER 2.54mm PITCH, RIGHT ANGLE, SHROUDED CRIMP TYPE

PART NO.: P9072R20-12-X
X=NO. OF WAYS



Recommended PCB Layout
(PCB tolerance ±0.08)

MATES WITH
MATING CONNECTOR:
P9072H & P9072T SERIES

PART NO.	Dimensions	
	A	B
P9072R20-12-2	2.54	7.62
P9072R20-12-3	5.08	10.16
P9072R20-12-4	7.62	12.70
P9072R20-12-5	10.16	15.24
P9072R20-12-6	12.70	17.78
P9072R20-12-7	15.24	20.32
P9072R20-12-8	17.78	22.86
P9072R20-12-9	20.32	25.40
P9072R20-12-A	22.86	27.94
P9072R20-12-B	25.40	30.48
P9072R20-12-C	27.94	33.02
P9072R20-12-D	30.48	35.56
P9072R20-12-E	33.02	38.10
P9072R20-12-F	35.56	40.64
P9072R20-12-G	38.10	43.18
P9072R20-12-H	40.64	45.72
P9072R20-12-I	43.18	48.26

Projection:



Scale: NTS

Sht. Size: A4

Gen. Tol.: ±0.10mm

ALL DIMENSIONS ARE IN MM.
IF UNLESS OTHERWISE SPECIFIED.