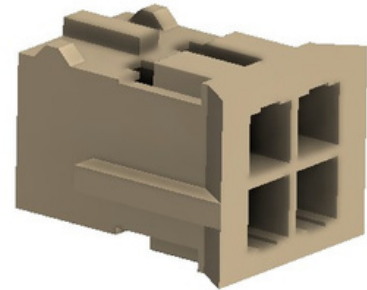




DESCRIPTION : HOUSING 2.0mm PITCH, DUAL ROW,
CRIMP TYPE

PART NO: P9069H29-00-XX
XX=NO. OF CONTACTS(04-40)

RoHS



PHYSICAL

INSULATION

MATERIAL : NYLON66, NATURAL COLOR

FLAMMABILITY : UL94V- 0

ELECTRICAL

CURRENT RATING : 3A, AC/DC

VOLTAGE RATING : 250V, AC/DC

CONTACT RESISTANCE : 10mΩ Max

INSULATION RESISTANCE : 1000MΩ Min

WITHSTANDING VOLTAGE : 800V AC For 1minute

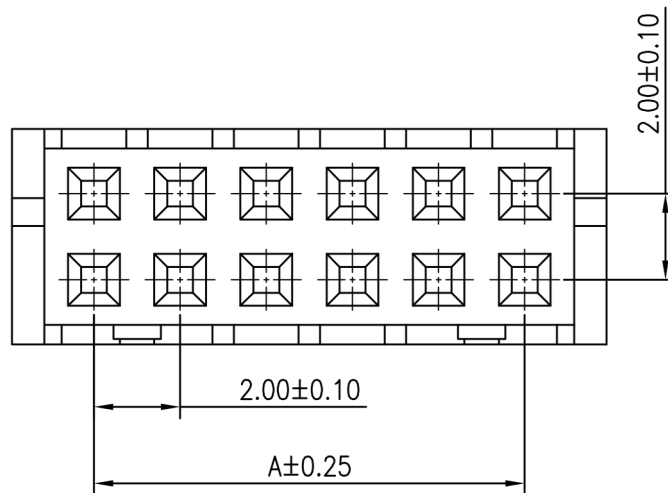
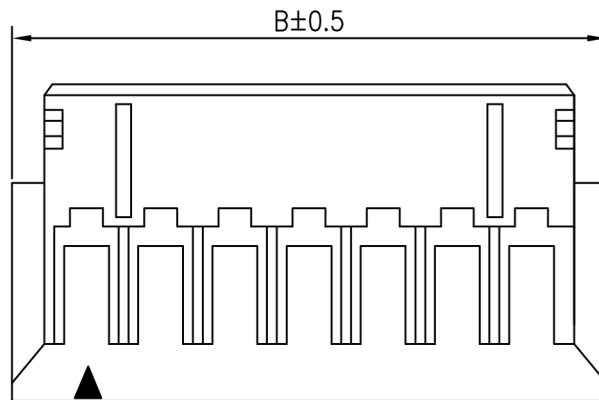
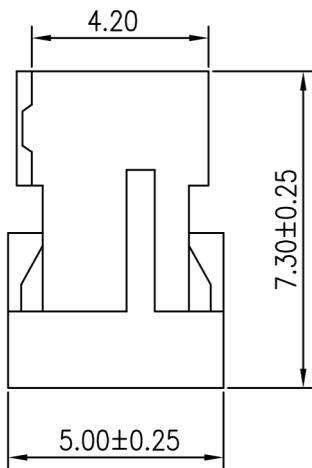
ENVIRONMENTAL DATA

TEMPERATURE RANGE : -25°C TO +85°C



DESCRIPTION : HOUSING 2.0mm PITCH, DUAL ROW,
CRIMP TYPE

PART NO: P9069H29-00-XX
XX=NO. OF CONTACTS(04-40)



Projection:

Scale: NTS

Sht. Size: A4

Gen. Tol.: $\pm 0.35\text{mm}$
 $\pm 2'$

ALL DIMENSIONS ARE IN MM.
IF UNLESS OTHERWISE SPECIFIED.



DESCRIPTION : HOUSING 2.0mm PITCH, DUAL ROW,
CRIMP TYPE

PART NO: P9069H29-00-XX
XX=NO. OF CONTACTS(04-40)

ORDERING INFORMATION

P9069H29-00-XX

NO OF WAYS
(04-40)

CIRCUITS	DIM. A	DIM.B
4	2.00	5.90
6	4.00	7.90
8	6.00	9.90
10	8.00	11.90
12	10.00	13.90
14	12.00	15.90
16	14.00	17.90
18	16.00	19.90
20	18.00	21.90
22	20.00	23.90
24	22.00	25.90
26	24.00	27.90
28	26.00	29.90
30	28.00	31.90
32	30.00	33.90
34	32.00	35.90
36	34.00	37.90
38	36.00	39.90
40	38.00	41.90

MATES WITH

P9069S/R SERIES HEADER
AND P9069T – TERMINAL

Projection:



Scale: NTS

Sht. Size: A4

Gen. Tol.: $\pm 0.35\text{mm}$
 $\pm 2'$

ALL DIMENSIONS ARE IN MM.
IF UNLESS OTHERWISE SPECIFIED.