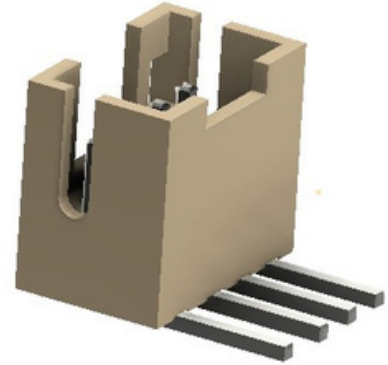




**DESCRIPTION** : 2.0mm PITCH PH CONNECTOR, RIGHT  
ANGLE

**PART NO:** P9057R29-19-X  
X=NO. OF WAYS(2-16)

RoHS



## PHYSICAL

INSULATION	:	
MATERIAL	:	NYLON
FLAMMABILITY	:	UL94V-0
COLOR	:	WHITE COLOR
CRIMP TERMINAL	:	COPPER ALLOY, TIN PLATED
PACKAGING TYPE	:	BULK PACKING

## ELECTRICAL

CURRENT RATING	:	1A
INSULATION RESISTANCE	:	1000M OHMS MIN
DIELECTRIC WITHSTANDING	:	800V AC/MIN
CONTACT RESISTANCE	:	20m OHMS MAX
VOLTAGE RATING	:	100V AC/DC

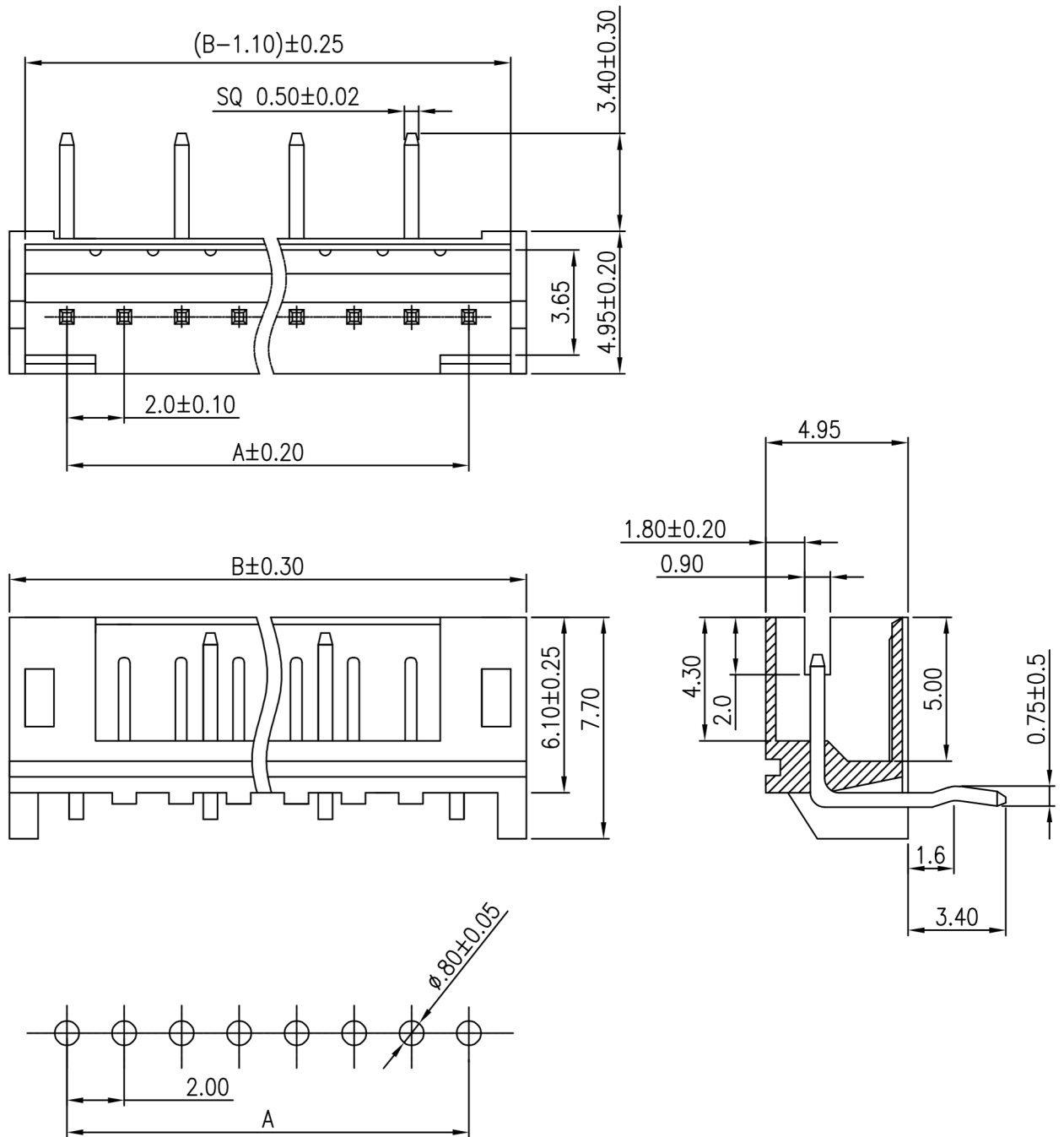
## ENVIRONMENTAL DATA

TEMPERATURE RANGE	:	-25° TO +85° C
PROCESS RATING	:	230°C FOR 5SEC



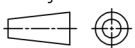
**DESCRIPTION :** 2.0mm PITCH PH CONNECTOR, RIGHT ANGLE

**PART NO:** P9057R29-19-X  
X=NO. OF WAYS(2-16)



RECOMMENDED PCB LAYOUT  
(PCB TOLERANCE  $\pm 0.05$ )

Projection:



Scale: NTS

Sht. Size: A4

Gen. Tol.:  $\pm 0.35$ mm

ALL DIMENSIONS ARE IN MM.  
IF UNLESS OTHERWISE SPECIFIED.



**DESCRIPTION** : 2.0mm PITCH PH CONNECTOR, RIGHT ANGLE

**PART NO:** P9057R29-19-X  
X=NO. OF WAYS(2-16)

NO. OF WAYS	DIMENSION		PART NUMBER
	A	B	
2	2.00	6.00	P9057R29-19-2
3	4.00	8.00	P9057R29-19-3
4	6.00	10.00	P9057R29-19-4
5	8.00	12.00	P9057R29-19-5
6	10.00	14.00	P9057R29-19-6
7	12.00	16.00	P9057R29-19-7
8	14.00	18.00	P9057R29-19-8
9	16.00	20.00	P9057R29-19-9
10	18.00	22.00	P9057R29-19-A
11	20.00	24.00	P9057R29-19-B
12	22.00	26.00	P9057R29-19-C
13	24.00	28.00	P9057R29-19-D
14	26.00	30.00	P9057R29-19-E
15	28.00	32.00	P9057R29-19-F
16	30.00	34.00	P9057R29-19-G

**MATES WITH**

P9057H -HOUSING  
P9057T -TERMINAL

ORDERING INFORMATION

P9057R29-19-X

NO OF WAYS

Projection:



Scale: NTS

Sht. Size: A4

Gen. Tol.: ±0.35mm

ALL DIMENSIONS ARE IN MM.  
IF UNLESS OTHERWISE SPECIFIED.