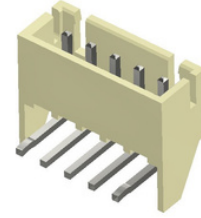




**DESCRIPTION:** WAFER 2.5mm PITCH DISCONNECTABLE RIGHT ANGLE

**PART NO:** P9052R29-19-X  
X= NO.OF WAYS (2-20)



## PHYSICAL DATA

INSULATION

|                |   |                   |
|----------------|---|-------------------|
| MATERIAL       | : | NYLON 66          |
| FLAMMABILITY   | : | UL94V-0           |
| COLOR          | : | NATURAL COLOR     |
| CONTACT        | : | BRASS, TIN PLATED |
| PACKAGING TYPE | : | BAG PACKING       |

## ELECTRICAL DATA

|                         |   |                     |
|-------------------------|---|---------------------|
| CURRENT RATING          | : | 3A AC,DC            |
| INSULATION RESISTANCE   | : | 1000M $\Omega$ Min. |
| DIELECTRIC WITHSTANDING | : | 800VAC/MINUTE       |
| CONTACT RESISTANCE      | : | 20m $\Omega$ Max.   |
| VOLTAGE RATING          | : | 250V AC/DC          |

## ENVIRONMENTAL DATA

|                       |   |                 |
|-----------------------|---|-----------------|
| TEMPERATURE RANGE     | : | -25° TO +85° C  |
| SOLDERING TEMPERATURE | : | 230°C FOR 5Sec. |

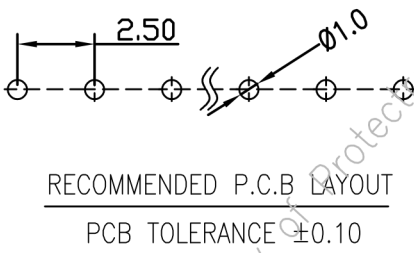
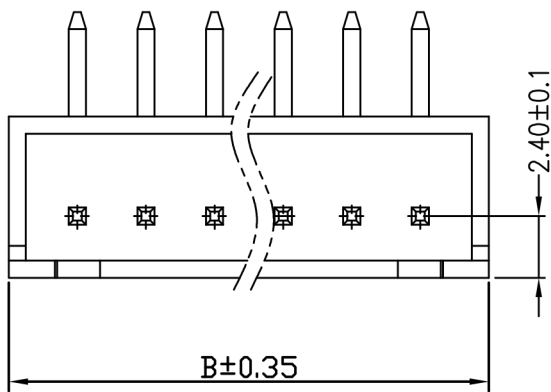
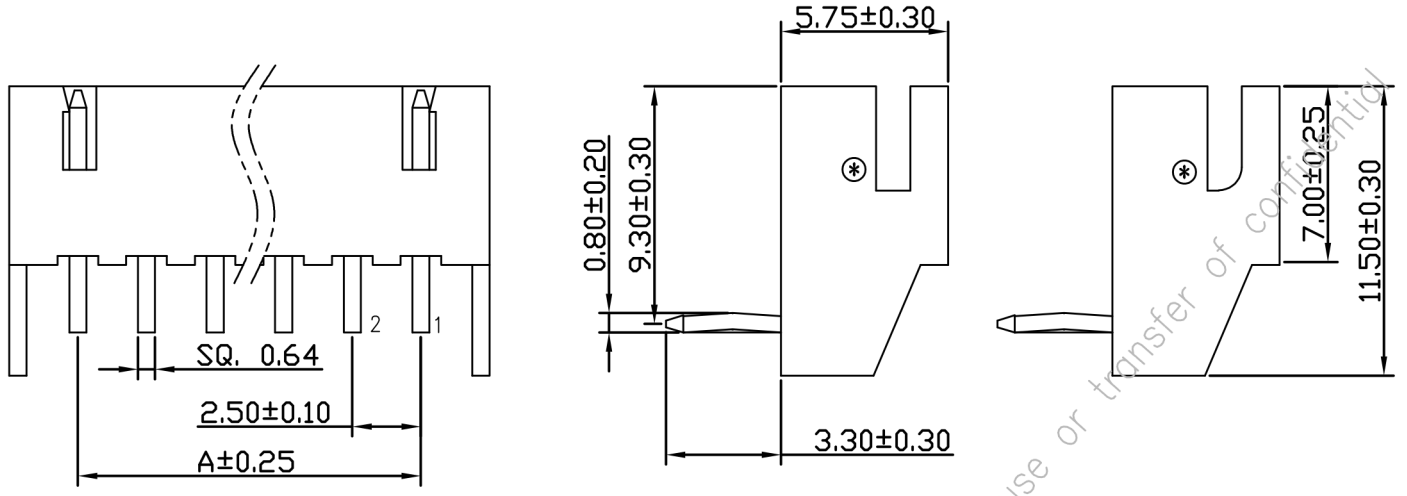
## MATING DETAILS

|                |   |        |
|----------------|---|--------|
| HOUSING        | : | P9052H |
| CRIMP TERMINAL | : | P9052T |



**DESCRIPTION:** WAFER 2.5mm PITCH DISCONNECTABLE RIGHT ANGLE

**PART NO:** P9052R29-19-X  
X= NO.OF WAYS (2-20)



| No. of ways | DIM.A(mm) | DIM.B(mm) |
|-------------|-----------|-----------|
| 2           | 2.5       | 7.5       |
| 3           | 5.0       | 10.0      |
| 4           | 7.5       | 12.5      |
| 5           | 10.0      | 15.0      |
| 6           | 12.5      | 17.5      |
| 7           | 15.0      | 20.0      |
| 8           | 17.5      | 22.5      |
| 9           | 20.0      | 25.0      |
| A           | 22.5      | 27.5      |
| B           | 25.0      | 30.0      |
| C           | 27.5      | 32.5      |
| D           | 30.0      | 35.0      |
| E           | 32.5      | 37.5      |
| F           | 35.0      | 40.0      |
| G           | 37.5      | 42.5      |
| H           | 40.0      | 45.0      |
| I           | 42.5      | 47.5      |
| J           | 45.0      | 50.0      |
| K           | 47.5      | 52.5      |

**NOTE :**

⊛ MARKED IS ONLY CHANGE IN CUTOUT, FUNCTIONALLY THERE WILL BE NO EFFECT ON THE PART ANY ONE OF THESE WILL BE SUPPLIED BASED ON THE STOCK AVAILABILITY.

Projection:

Scale: NTS

Sht. Size: A4

Gen. Tol.:  $\pm 0.35\text{mm}$   
 $\pm 2'$

ALL DIMENSIONS ARE IN MM.  
IF UNLESS OTHERWISE SPECIFIED.