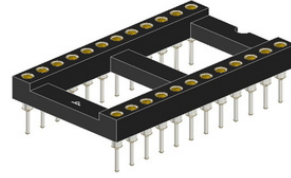




**DESCRIPTION : IC SOCKET DUAL-IN-LINE 0.6" PITCH  
OPEN FRAME.**

**PART NO: P8056-XX-XX**

RoHS



**PHYSICAL DATA**

MATERIAL & FINISH:

INSULATOR BODY : GLASS FILLED THERMOPLASTIC RATED UL94 V-0  
SELF EXTINGUISHING,  
CONTACT OUTER SLEEVE : SCREW MACHINED, BRASS, TIN PLATED  
OR 5μ TIN-LEAD PLATED OVER NICKEL.  
INNER CLIP : BERYLLIUM-COPPER, GOLD OR TIN PLATED

**ELECTRICAL DATA**

INSULATION RESISTANCE : 5,000 M OHMS @ 500V DC (Min.)  
CONTACT RESISTANCE : 20m OHMS (Max.)  
CURRENT RATING : 1A  
RATED VOLTAGE : 100V AC  
VOLTAGE PROOF : 600V AC

**MECHANICAL DATA**

MECHANICAL LIFE : 50 CYCLES MIN.  
INSERTION FORCE : <2N (<0.2Kg.) WITH STEEL PIN DIA 0.41  
EXTRACTION FORCE : <0.5N (0.05Kg.) WITH STEEL PIN DIA 0.41

**ENVIRONMENTAL DATA**

OPERATING TEMP. RANGE : -65°C TO +125°C  
RESISTANCE TO SOLDERING HEAT : +260°C, 10 Sec.

Projection:



Scale: NTS

Sht. Size: A4

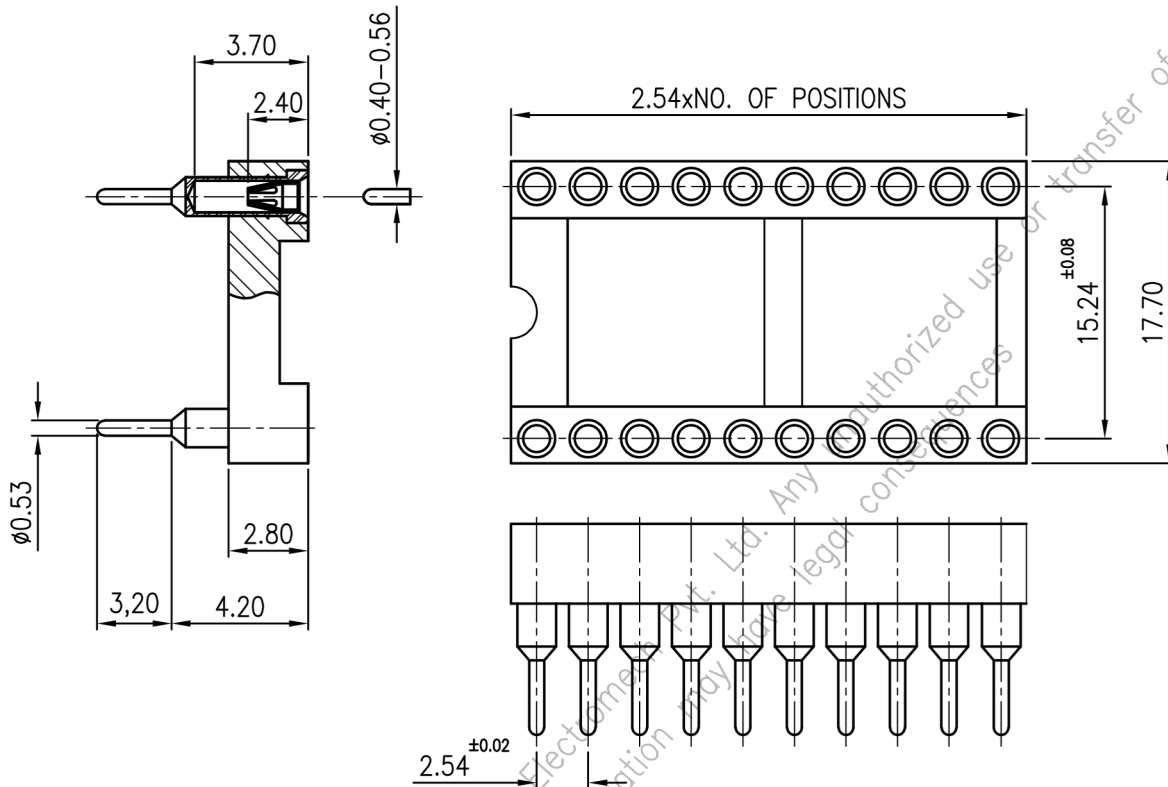
Gen. Tol.: ±0.3mm  
±2°

ALL DIMENSIONS ARE IN MM.  
IF UNLESS OTHERWISE SPECIFIED.



**DESCRIPTION :** IC SOCKET DUAL-IN-LINE 0.6" PITCH  
OPEN FRAME.

**PART NO:** P8056-XX-XX  
XX=NO.OF CONTACTS



Confidential Property of Protectron Electromech Pvt. Ltd. Any unauthorized use or transfer of confidential information may have legal consequences