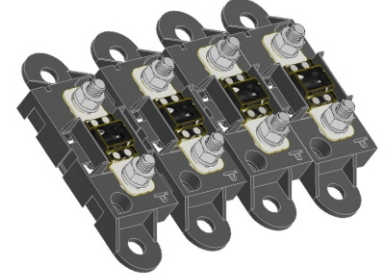
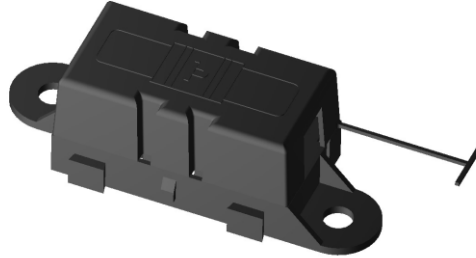




**DESCRIPTION :** FUSE HOLDER FOR MIDI BOLT DOWN FUSE, RoHS

**PART NO:** P803B-03-XX



**DESCRIPTION**

FUSE HOLDER CAN BE USED AS A SINGLE AUTOMOTIVE FUSE HOLDER OR COMBINED WITH ADDITIONAL FUSE HOLDERS TO CREATE A MULTI-FUSE BLOCK. STACKED WITH MIDI BOLT-DOWN FUSES UPTO 200 AMPS.

**PHYSICAL DATA**

BASE & COVER	:	THERMOPLASTIC, BLACK COLOR
FLAMMABILITY	:	UL94V-0
BOLTS, NUTS & WASHER	:	STAINLESS STEEL 304

**ELECTRICAL DATA**

MAX VOLTAGE RATING	:	58V DC
MAX FUSE RATING	:	200A
WIRE SIZE	:	25mm <sup>2</sup>

**ENVIRONMENTAL DATA**

TEMPERATURE RANGE	:	-40°C TO +125°C
-------------------	---	-----------------

**MECHANICAL DATA**

TIGHTENING TORQUE FOR FUSE	:	4 Nm MAX.
----------------------------	---	-----------

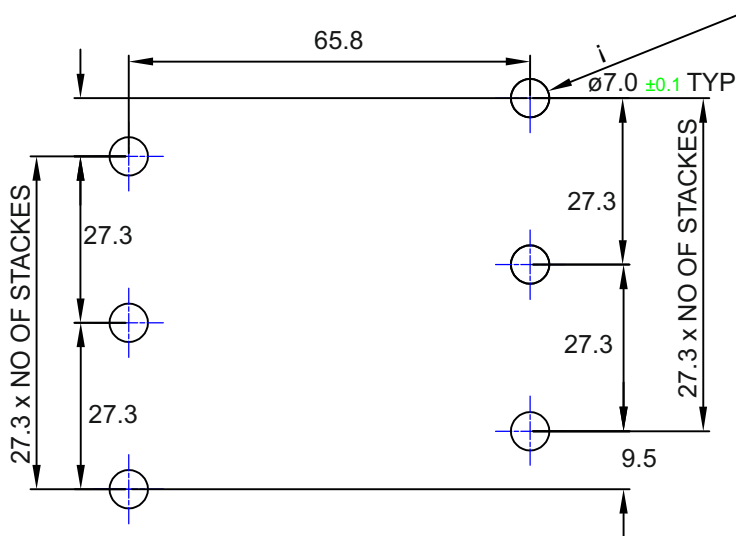
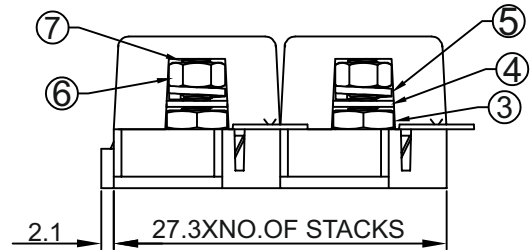
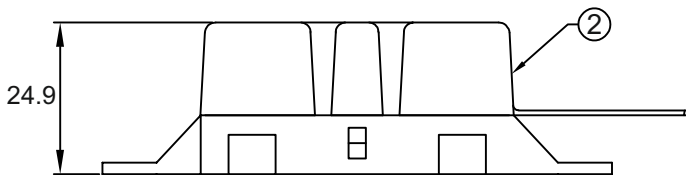
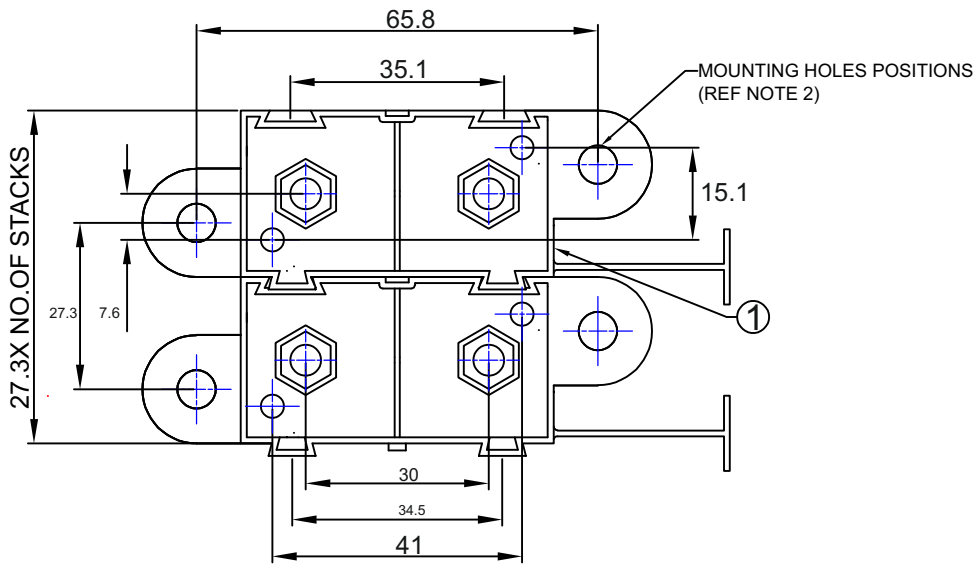
**FUSE DATA**

PBFT-L IN & PBFT-LCT-IN	:	30A TO 200A
-------------------------	---	-------------



**DESCRIPTION :** FUSE HOLDER FOR MIDI BOLT DOWN FUSE, RoHS

**PART NO:** P803B-03-XX

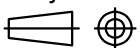


**RECOMMENDED MOUNTING LAYOUT**  
**(LAYOUT TOLERANCE ± 0.2mm)**

7	M5 HEXA BOLT	SS 304
6	M5 FULL NUT	SS 304
5	SPRING WASHER	SS 304
4	PLAIN WASHER	SS 304
3	HALF NUT	SS 304
2	COVER	THERMOPLASTIC, UL94 V-0
1	BASE	THERMOPLASTIC, UL94 V-0
SI NO.	DESCRIPTION	MATERIAL & FINISH

- NOTE : 1. M5 HEXA BOLT & HEXA NUTS WITH LOCK WASHERS TO BE USED FOR FUSE HOLDING.  
2. M6 HEXA SOCKET HEAD BOLT TO BE USED FOR MOUNTING THE FUSE HOLDER, TIGHTENING TORQUE MUST BE 6-7 Nm MAX.

Projection:



Scale: NTS

Sht. Size: A4

Gen. Tol.: ±0.5mm  
±2'

ALL DIMENSIONS ARE IN MM.  
IF UNLESS OTHERWISE SPECIFIED.



**DESCRIPTION :** FUSE HOLDER FOR MIDI BOLT DOWN FUSE, RoHS

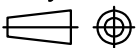
**PART NO:** P803B-03-XX

## ORDERING INFORMATION

P803B-03-XX

	BLANK (1 FUSE HOLDER)
XX	NO.OF STACKS (Eg:02- 2 FUSE HOLDERS STACKED)

Projection:



Scale: NTS

Sht. Size: A4

Gen. Tol.:  $\pm 0.5\text{mm}$   
 $\pm 2'$

ALL DIMENSIONS ARE IN MM.  
IF UNLESS OTHERWISE SPECIFIED.