

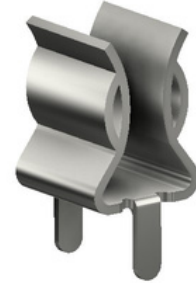


**DESCRIPTION** : PCB MOUNT CLIPS FOR  $\phi$ 6.35mm FUSE, 7.50mm PITCH

**PART NO:** P8038-01



RoHS



## PHYSICL DATA

CLIP : PHOSPHOR BRONZE, TIN PLATED.  
PACKING INFORMATION : 1000Nos. min. IN POLY PAGS

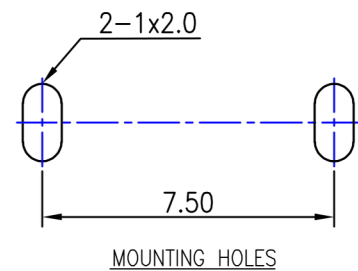
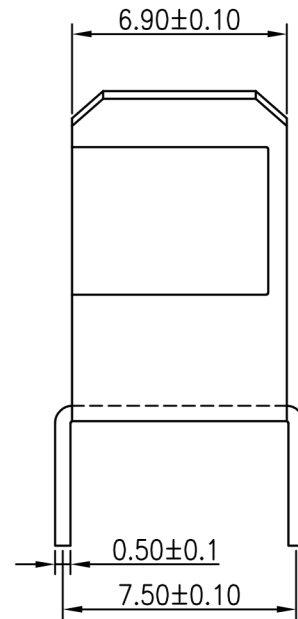
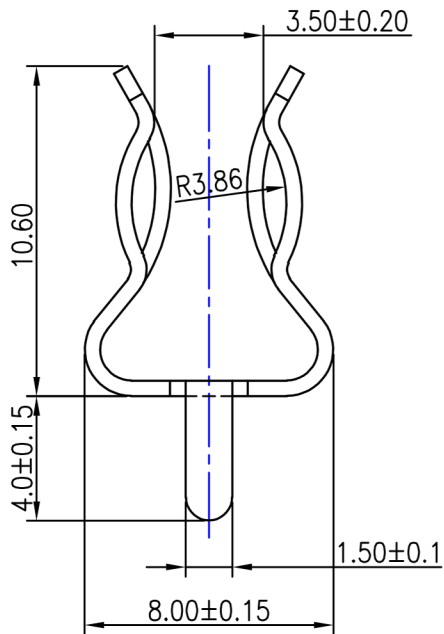
## ELECTRICAL DATA

MAXIMUM RATED CURRENT : 20A  
MAXIMUM RATED POWER : 225 watts  
MAXIMUM UPRATING TEMP : 50°c  
MAXIMUM VOLTAGE : 15V



**DESCRIPTION** : PCB MOUNT CLIPS FOR  $\phi 6.35$ mm FUSE, 7.50mm PITCH

**PART NO:** P8038-01



Projection:



Scale: NTS

Sht. Size: A4

Gen. Tol.: ±0.35mm

ALL DIMENSIONS ARE IN MM.  
IF UNLESS OTHERWISE SPECIFIED.