



DESCRIPTION : P.C.B MOUNT FUSE HOLDER FOR $\phi 5.20$ x 20mm
FUSE, BOX TYPE

PART NO: P8029-12

RoHS



MATERIAL & FINISH:

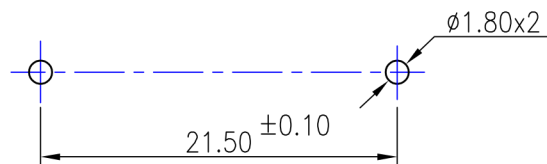
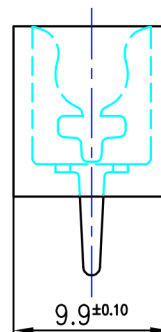
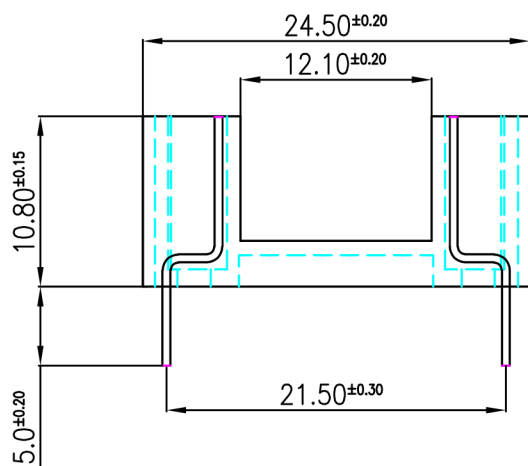
INSULATOR BODY : PA66, UL94 V0
CONTACT : BRASS, TIN PLATED

ELECTRICAL DATA:

RATED CURRENT : 6.3A 250V
INSULATION RESISTANCE : $>1000M \Omega$ MIN AT 500V DC
DIELECTRIC STRENGTH : 500V AC MIN
OPERATING TEMP : $-20^{\circ}C$ TO $+85^{\circ}C$
SOLDERING TEMP : $270^{\circ}C$ FOR 5 SEC MAX.
CONTACT RESISTANCE : $10M \Omega$ MAX

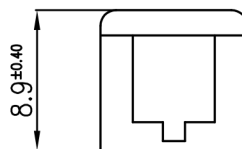
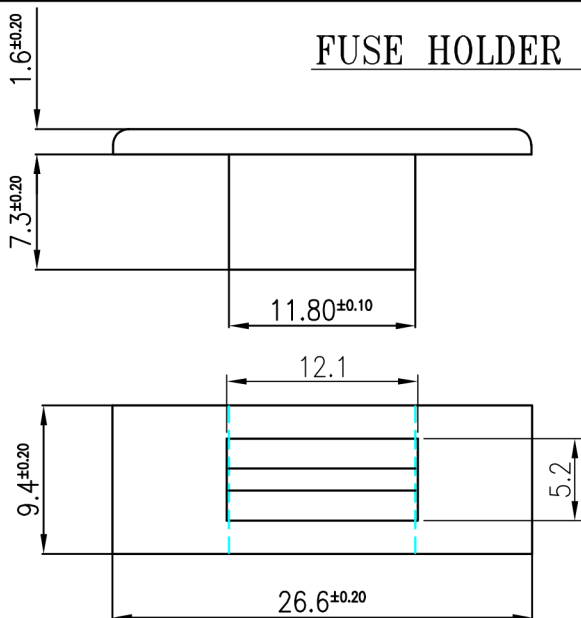
DESCRIPTION : P.C.B MOUNT FUSE HOLDER FOR $\phi 5.20 \times 20\text{mm}$
FUSE, BOX TYPE

PART NO: P8029-12



PCB MOUNTING HOLE DETAILS

FUSE HOLDER CAP



Projection:



Scale: NTS

Sht. Size: A4

Gen. Tol.: $\pm 1\text{mm}$
 $\pm 2^\circ$

ALL DIMENSIONS ARE IN MM.
IF UNLESS OTHERWISE SPECIFIED.