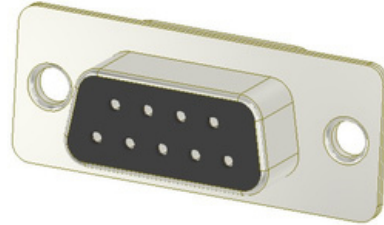




DESCRIPTION : D-SUB FEMALE, STRAIGHT, SOLDER TYPE, 2 ROW, THROUGH HOLE STAMPED CONTACT **PART NO:** P7035FXX-02-5

RoHS



PHYSICAL DATA

INSULATION	
MATERIAL	: PBT+30%G.F
FLAMMABILITY	: UL94V-0
CONTACT	
MATERIAL	: COPPER ALLOY
FINISH	: SELECTIVE GOLD PLATED
PACKAGING TYPE	: STANDARD

ELECTRICAL DATA

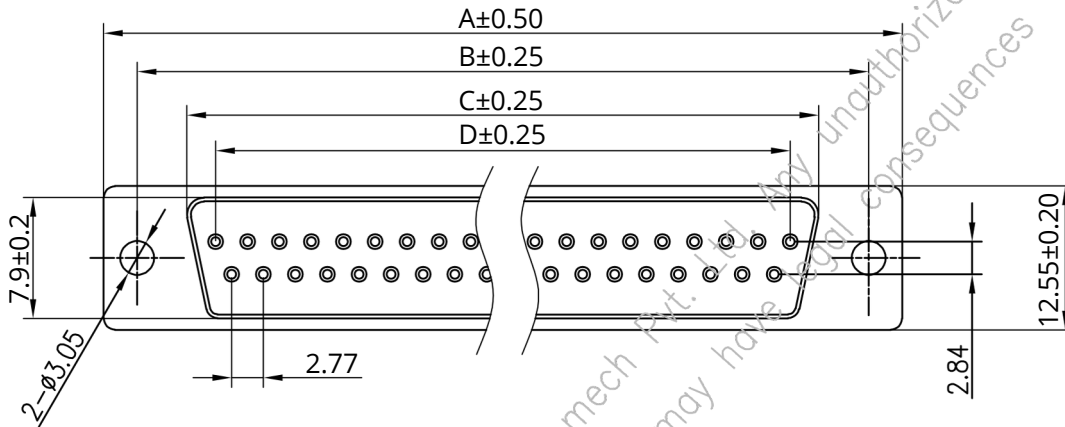
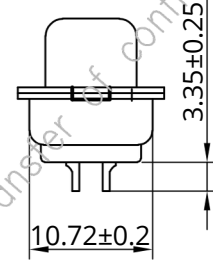
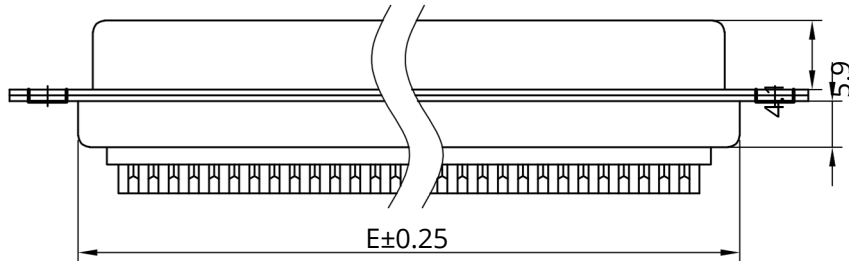
CURRENT RATING	: 3A
INSULATION RESISTANCE	: 1000M OHMS MIN
DIE ELECTRIC WITHSTAND	: 500V AC/MIN
CONTACT RESISTANCE	: 30m OHMS MAX.

ENVIRONMENTAL DATA

TEMPERATURE RANGE	: -40° TO +105° C
-------------------	-------------------

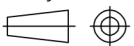
DESCRIPTION : D-SUB FEMALE, STRAIGHT, SOLDER TYPE, 2 ROW, THROUGH HOLE STAMPED CONTACT

PART NO: P7035FXX-02-5



NO. OF CONTACTS	DIMENSIONS in mm				
	A	B	C	D	E
9	30.84	24.99	16.33	11.08	19.20
15	39.14	33.32	24.66	19.39	27.70
25	53.04	47.04	38.38	33.24	41.10
37	69.32	63.50	54.84	49.86	57.30

Projection:



Scale: NTS

Sht. Size: A4

5. Tol.: ± 0.35 mm
 $\pm 2^\circ$

ALL DIMENSIONS ARE IN MM.
IF UNLESS OTHERWISE SPECIFIED.