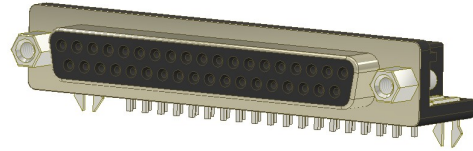




DESCRIPTION : D-SUB FEMALE, PCB RIGHT ANGLE TYPE
(STAMP CONTACT)

PART NO: P7032FXX-01-5
XX=NO. OF POSITIONS-9,15,25,37

RoHS



PHYSICAL DATA

MATERIAL:

CONTACT : COPPER ALLOY, SELECTIVE GOLD PLATED

INSULATOR : PBT, UL 94V-0

ELECTRICAL DATA

CURRENT RATING : 3A

INSULATION RESISTANCE : 1000 mOHMS Min.

DIELECTRIC VOLTAGE : 500V AC for one minute.

CONTACT RESISTANCE : 13m OHMS Max.

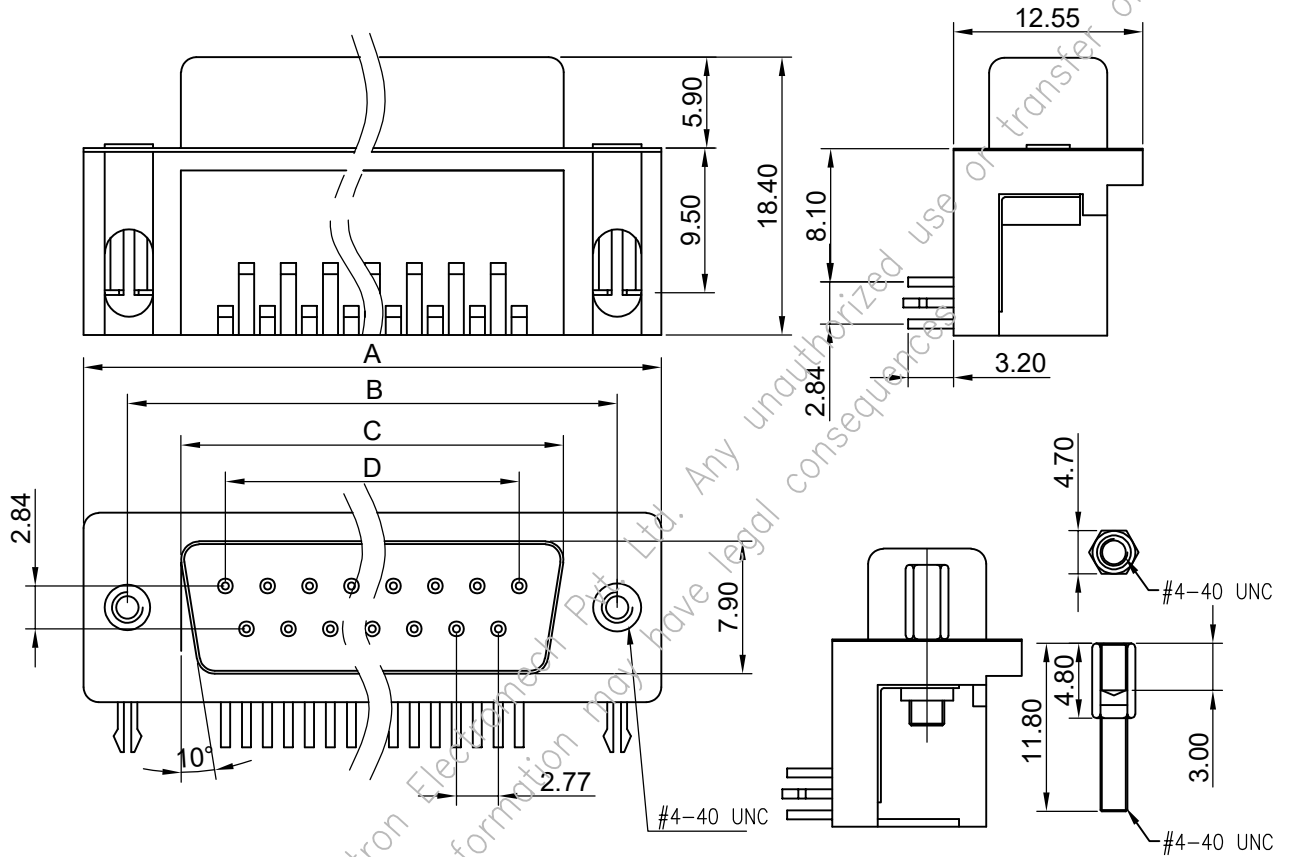
ENVIRONMENTAL DATA

OPERATING TEMP. RANGE : -55°C TO +105°C



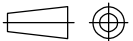
DESCRIPTION : D-SUB FEMALE, PCB RIGHT ANGLE TYPE
(STAMP CONTACT)

PART NO: P7032FXX-01-5
XX=NO. OF POSITIONS-9,15,25,37



NO. OF POSITIONS	DIMENSIONS in mm			
	A	B	C	D
9	30.81	24.99	16.33	11.08
15	39.14	33.32	24.66	19.39
25	53.04	47.04	38.38	33.24
37	69.32	63.50	54.84	49.86

Projection:



Scale: NTS

Sht. Size: A4

5. Tol.: ±0.35mm
±2'

ALL DIMENSIONS ARE IN MM.
IF UNLESS OTHERWISE SPECIFIED.