

MONITORING CONNECTOR SYSTEM



1 MM VERTICAL JACK TIP (TEST POINT)

1mm Vertical Jack Tip Insulated Conical Type

P8001

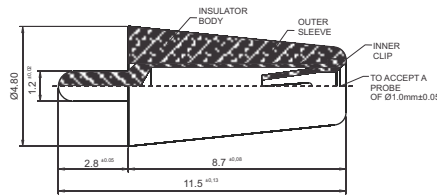
Specifications

Current Rating	: 5A max.
Contact Resistance	: 5mΩ max.
Insulation Resistance	: 1000MΩ min.
Dielectric Withstanding	: 500V AC min.
Temperature Range	: -25°C to +70°C
Insertion Force with Ø1.02mm	: 130gms
Extraction Force with Ø0.98mm	: 190gms
Mounting Hole Dia in PCB	: Ø1.30mm
Mating Connectors	: P8003, P8005

Material & Finish

Outer sleeve	: Brass, Tin/Gold plated
Inner clip	: Beryllium Copper, Gold plated
Insulator	: Polypropylene

Colour	Part Number	
	Tin Plated	Gold Plated
Black	P8001-10-19	P8001-10-12
Brown	P8001-11-19	P8001-11-12
Red	P8001-12-19	P8001-12-12
Orange	P8001-13-19	P8001-13-12
Yellow	P8001-14-19	P8001-14-12
Green	P8001-15-19	P8001-15-12
Blue	P8001-16-19	P8001-16-12
Violet	P8001-17-19	P8001-17-12
Grey	P8001-18-19	P8001-18-12
White	P8001-19-19	P8001-19-12



1mm Vertical Jack Tip Insulated Cylindrical Type

P8101

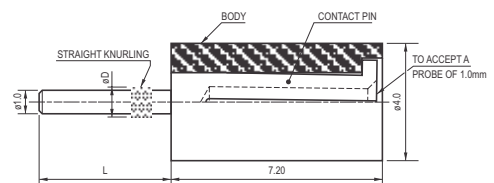
Specifications

Current Rating	: 5A max.
Contact Resistance	: 5mΩ max.
Insulation Resistance	: 1000MΩ min.
Dielectric Withstanding	: 500V AC min.
Temperature Range	: -25°C to +70°C
Insertion Force with Ø1.02mm	: 2.2Kg max.
Extraction Force with Ø0.98mm	: 0.18Kg min.
Mounting Hole Dia in PCB	: Ø1.3mm
Mating Connectors	: P8003, P8005

Material & Finish

Contact	: Brass, Silver/Gold Plated
Insulator	: Polypropylene

Colour	Part Number			
	For L=4.5mm, D-1.3mm		For L=3.0mm, D-1.2mm	
	Silver Plated	Gold Plated	Silver Plated	Gold Plated
Black	P8101-10-11-0	P8101-10-12-0	P8101-10-11-S	P8101-10-12-S
Brown	P8101-11-11-0	P8101-11-12-0	P8101-11-11-S	P8101-11-12-S
Red	P8101-12-11-0	P8101-12-12-0	P8101-12-11-S	P8101-12-12-S
Orange	P8101-13-11-0	P8101-13-12-0	P8101-13-11-S	P8101-13-12-S
Yellow	P8101-14-11-0	P8101-14-12-0	P8101-14-11-S	P8101-14-12-S
Green	P8101-15-11-0	P8101-15-12-0	P8101-15-11-S	P8101-15-12-S
Blue	P8101-16-11-0	P8101-16-12-0	P8101-16-11-S	P8101-16-12-S
Violet	P8101-17-11-0	P8101-17-12-0	P8101-17-11-S	P8101-17-12-S
Grey	P8101-18-11-0	P8101-18-12-0	P8101-18-11-S	P8101-18-12-S
White	P8101-19-11-0	P8101-19-12-0	P8101-19-11-S	P8101-19-12-S



1MM CONNECTOR JACK

Specifications

Current Rating	: 3A max.
Contact Resistance	: 5mΩ max.
Temperature Range	: -25°C to +70°C
Insertion Force with Ø1.02mm	: 0.45Kg max.
Extraction Force with Ø0.98mm	: 0.056Kg min.
Mounting Hole Dia in PCB	: Ø2.2mm
Mating Connectors	: P8003, P8005

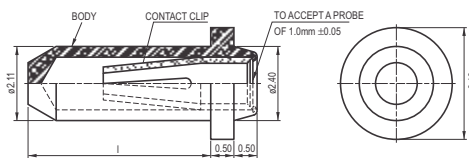
Material & Finish

Inner Clip	: Beryllium Copper, Gold Plated
Outer Sleeve	: Brass, Silver / Gold / Tin Plated

Type 1: 1mm Connector Jack Non-Insulated

P8002

Finish	Part Number	
	For l=5.2mm	For l=7.2mm
Silver Plated	P8002-11-32-0	P8002-11-32-L
Gold Plated	P8002-12-32-0	P8002-12-32-L
Tin Plated	P8002-19-32-0	P8002-19-32-L



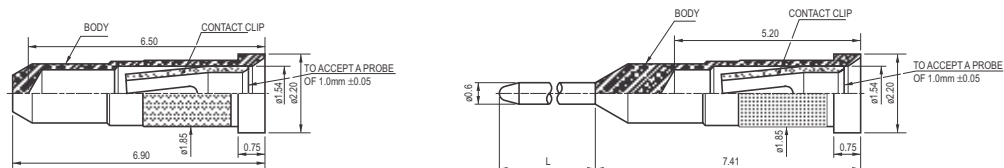
Type 2: 1mm Connector Jack Non-Insulated with Knurling

P8102

Finish	Part Number		
	With out Tail	Tail Length L=7.64mm	Tail Length L=4.64mm
Silver Plated	P8102-11-32	P8102A11-32	P8102B11-32
Gold Plated	P8102-12-32	P8102A12-32	P8102B12-32
Tin Plated	P8102-19-32	P8102A19-32	P8102B19-32



Mounting Hole Dia in PCB: Ø1.85mm

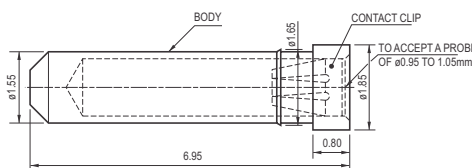


Type 3: 1mm Connector Jack Non-Insulated with Fishhook

P8202

Specifications

Current Rating	: 3A max.
Contact Resistance	: 5mΩ
Temperature Range	: -25°C to +70°C
Insertion Force	: 0.18Kg max.
Extraction Force	: 0.05Kg min.
Mounting Hole Dia in PCB	: Ø1.55mm
Mating Connectors	: P8003, P8005



Finish	Part Number
Tin Plated	P8202-19-32

1 MM MALE PIN

1mm Male Pin Non-Insulated

P8003

Specifications

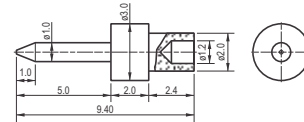
Current Rating	: 5A
Contact Resistance	: 5mΩ max.
Temperature Range	: -25°C to +70°C
Mounting Hole Dia in PCB	: Fig 1. Ø2.25mm Fig 2 & 3. Ø1.25mm
Mating Connectors	: P8001, P8002, P8101, P8102, P8202

Material & Finish

Contact : Brass, Silver / Gold Plated



Fig 1



Finish	Part Number		
	Pin Straight Ø3mm	Pin Right Angle Ø1.75mm	Pin Straight Ø1.75mm
Silver Plated	P8003-00-11-0	P8003-00-11-R	P8003-00-11-S
Gold Plated	P8003-00-12-0	P8003-00-12-R	P8003-00-12-S

Fig 2

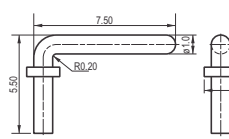
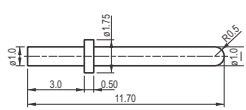


Fig 3



1 MM SHORTING LINK

1mm Insulated & Non-Insulated

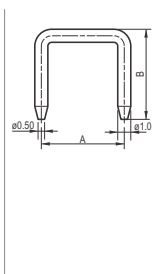
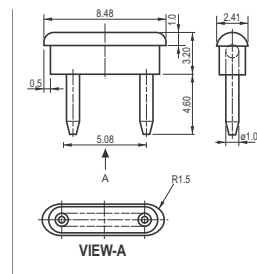
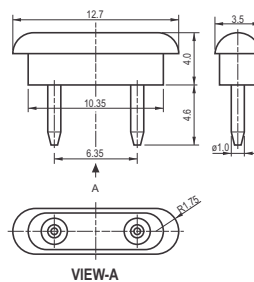
P8005

Specifications

Current Rating	: 5A	Material & Finish	
Temperature Range	: -25°C to +70°C	Contact	: Brass, Silver/Gold Plated
Mating Connectors	: P8001, P8002, P8101, P8102, P8202	Insulator	: Polypropylene, Grey/Red Colour



Item (Pitch) A	Part Number	
	Silver Plated	Gold Plated
Insulated (5.08mm) Grey	P8005-18-11-1	P8005-18-12-1
Insulated (6.35mm) Grey	P8005-18-11-2	P8005-18-12-2
Insulated (5.08mm) Red	P8005-12-11-1	P8005-12-12-1
Insulated (6.35mm) Red	P8005-12-11-2	P8005-12-12-2
Non-Insulated (5.08mm)	P8005-00-11-1	P8005-00-12-1
Non-Insulated (6.35mm)	P8005-00-11-2	P8005-00-12-2
Non-Insulated (10.16mm)	P8005-00-11-3	P8005-00-12-3
Non-Insulated (12.70mm)	P8005-00-11-4	P8005-00-12-4



1.5MM PANEL SOCKET

1.5mm Insulated

P8010

Specifications

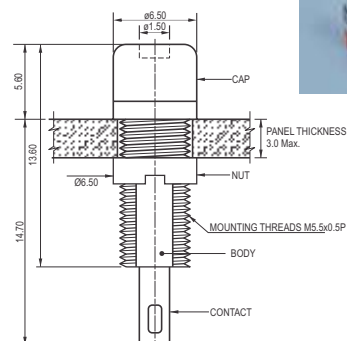
Voltage Rating	: 250V AC/DC
Current Rating	: 4A max.
Contact Resistance	: 5mΩ max.
Insulation Resistance	: 10000MΩ min.
Temperature Range	: -25°C to +70°C
Fixing Torque for Mounting	: 20Ncm max.
Mounting Holes	: Float Mount - Ø5.7hole Rigid Mount - Ø5.7x4.8

Material & Finish

Contact	: Beryllium Copper, Gold Plated
Body	: Polybutylene Teraphthalate (PBT)
Cap	: Polypropylene
Ring Nut	: Brass, Nickel Plated



Colour (Cap)	Part Number
Black	P8010-10-32
Red	P8010-12-32



LED HOLDER

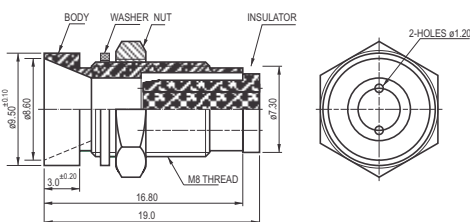
5mm Reflecting Type

P8032

Material & Finish

Body : Brass, Nickel Chrome Plated
 Insulator : Nylon
 Nut : Brass, Nickel Plated
 Washer : Brass, Nickel Plated
 Mounting Hole : Ø8.3mm

Type	Part Number
5mm Reflecting	P8032-15-16



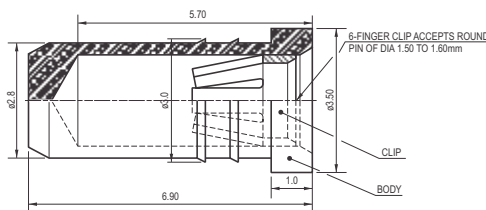
1.5MM CONNECTOR JACK

1.5mm Connector Jack Non-Insulated

P8040A

Specifications

Voltage Rating : 250V AC
 Current Rating : 4A
 Contact Resistance : 5mΩ max.
 Temperature Range : -25°C to +70°C
 Insertion Force : 0.35Kg max.
 Extraction Force : 0.1Kg min.
 Mounting Hole Dia in PCB : Ø2.90mm



Material & Finish

Inner Clip : Beryllium Copper, Gold Plated
 Outer Sleeve : Brass, Tin/Gold Plated

Finish	Part Number
Tin Plated	P8040A19-32
Gold Plated	P8040A12-32

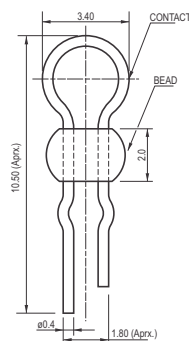
TEST PIN

P8042

Material & Finish

Contact : Phosphor Bronze, Gold Plated
 Bead : Ceramic
 Mounting Hole Dia in PCB : Ø0.9 to Ø1.0mm

Colour	Part Number
	Gold Plated
Black	P8042-C0-22
Red	P8042-C2-22
Yellow	P8042-C4-22
Green	P8042-C5-22
Blue	P8042-C6-22
White	P8042-C9-22



2.03MM JACK TIP HORIZONTAL (TEST POINT)

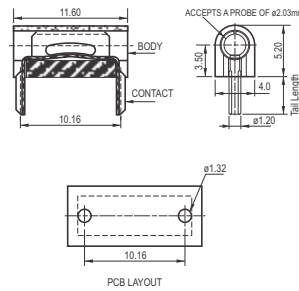
Specifications

Voltage Rating	: 600V	Dielectric Withstanding	: 2500V rms.	Material & Finish	
Current Rating	: 4A max.	Temperature Range	: -40°C to +70°C	Contact	: Beryllium Copper, Silver/Gold Plated
Contact Resistance	: 5mΩ max.	Insertion Force	: 2.2Kg max.	Insulator	: Polypropylene
Insulation Resistance	: 10000MΩ min.	Extraction Force	: 0.22Kg min.		

Type 1: Horizontal Ø2.03mm

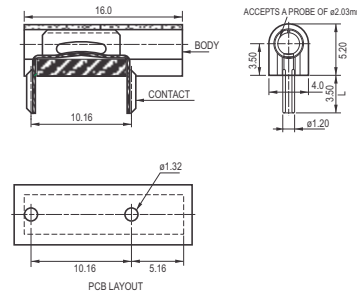
P8020 Series

Colour	Part Number			
	For Tail Length=3.50mm		For Tail Length=5.56mm	
	Silver Plated	Gold Plated	Silver Plated	Gold Plated
Black	P8020-10-31-0	P8020-10-32-0	P8020-10-31-L	P8020-10-32-L
Brown	P8020-11-31-0	P8020-11-32-0	P8020-11-31-L	P8020-11-32-L
Red	P8020-12-31-0	P8020-12-32-0	P8020-12-31-L	P8020-12-32-L
Orange	P8020-13-31-0	P8020-13-32-0	P8020-13-31-L	P8020-13-32-L
Yellow	P8020-14-31-0	P8020-14-32-0	P8020-14-31-L	P8020-14-32-L
Green	P8020-15-31-0	P8020-15-32-0	P8020-15-31-L	P8020-15-32-L
Blue	P8020-16-31-0	P8020-16-32-0	P8020-16-31-L	P8020-16-32-L
Violet	P8020-17-31-0	P8020-17-32-0	P8020-17-31-L	P8020-17-32-L
Grey	P8020-18-31-0	P8020-18-32-0	P8020-18-31-L	P8020-18-32-L
White	P8020-19-31-0	P8020-19-32-0	P8020-19-31-L	P8020-19-32-L



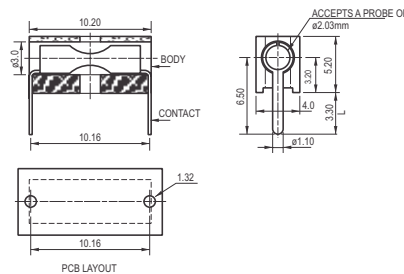
Type 2: Front Panel Jack Tip Ø2.03mm

Colour	Part Number (L=3.5mm)	
	Silver Plated	Gold Plated
Black	P8020-10-31-P	P8020-10-32-P
Brown	P8020-11-31-P	P8020-11-32-P
Red	P8020-12-31-P	P8020-12-32-P
Orange	P8020-13-31-P	P8020-13-32-P
Yellow	P8020-14-31-P	P8020-14-32-P
Green	P8020-15-31-P	P8020-15-32-P
Blue	P8020-16-31-P	P8020-16-32-P
Violet	P8020-17-31-P	P8020-17-32-P
Grey	P8020-18-31-P	P8020-18-32-P
White	P8020-19-31-P	P8020-19-32-P



Type 3: Top and Side Entry Jack Tip Ø2.03mm

Colour	Part Number (L=3.3mm)	
	Silver Plated	Gold Plated
Black	P8020-10-31-T	P8020-10-32-T
Brown	P8020-11-31-T	P8020-11-32-T
Red	P8020-12-31-T	P8020-12-32-T
Orange	P8020-13-31-T	P8020-13-32-T
Yellow	P8020-14-31-T	P8020-14-32-T
Green	P8020-15-31-T	P8020-15-32-T
Blue	P8020-16-31-T	P8020-16-32-T
Violet	P8020-17-31-T	P8020-17-32-T
Grey	P8020-18-31-T	P8020-18-32-T
White	P8020-19-31-T	P8020-19-32-T



Type 4: Square Body Non-Insulated Side Mounted Ø2.03mm

P8025A

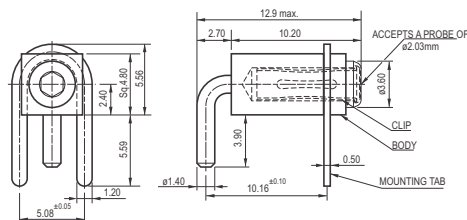
Specifications

Voltage Rating	: 250V
Current Rating	: 5.5A max.
Contact Resistance	: 4mΩ max.
Temperature Range	: -65°C to +85°C
Insertion Force	: 2.2Kg max.
Extraction Force	: 0.18Kg min.

Finish	Part Number
Gold Plated	P8025A12-32

Material & Finish

Inner Clip	: Beryllium Copper, Gold Plated
Outer Sleeve	: Brass, Gold Plated
Mounting Tab	: Brass, Gold Plated



2.03MM JACK TIP VERTICAL (TEST POINT)

Specifications

Voltage Rating	: 600V
Current Rating	: 4A max.
Contact Resistance	: 5mΩ max.
Insulation Resistance	: 10000MΩ min.
Dielectric Withstanding	: 2500V rms.
Temperature Range	: -40° to +85°
Insertion Force	: 2.2Kg max.
Extraction Force	: 0.18Kg min.

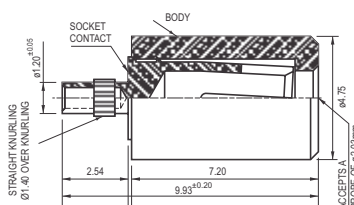
Material & Finish

Contact	: Phosphor Bronze, Silver/Gold Plated
Insulator	: Glass Filled Nylon

Type 1: Vertical Ø2.03mm with Knurling

P8021

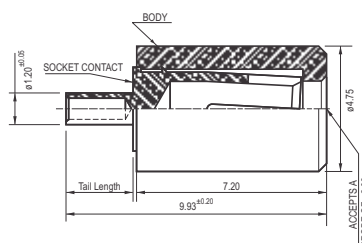
Colour	Part Number	
	Silver Plated	Gold Plated
Black	P8021-20-21	P8021-20-22
Red	P8021-22-21	P8021-22-22
Green	P8021-25-21	P8021-25-22



Type 2: Vertical Ø2.03mm without Knurling

P8022

Colour	Part Number, Tail Length= 2.54mm	
	Silver Plated	Gold Plated
Black	P8022-20-21-0	P8022-20-22-0
Red	P8022-22-21-0	P8022-22-22-0
Green	P8022-25-21-0	P8022-25-22-0



Colour	Part Number, Tail Length= 4.5mm	
	Silver Plated	Gold Plated
Black	P8022-20-21-L	P8022-20-22-L
Red	P8022-22-21-L	P8022-22-22-L
Green	P8022-25-21-L	P8022-25-22-L

Type 3: Vertical Ø2.03mm Panel Mounting Press Fit

P8025

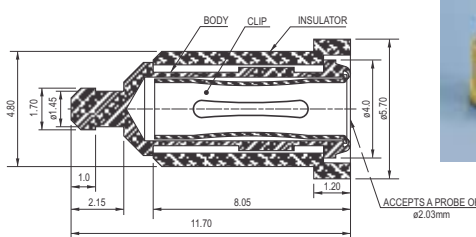
Specifications

Voltage Rating	: 800V
Current Rating	: 5.5A max.
Contact Resistance	: 4mΩ max.
Insulation Resistance	: 5000MΩ min.
Dielectric Withstanding	: 1800V rms.
Temperature Range	: -65°C to +85°C
Insertion Force	: 2.2Kg max.
Extraction Force	: 0.18Kg min

Material & Finish

Inner Clip	: Beryllium Copper, Gold Plated
Outer Sleeve	: Brass, Gold Plated
Insulator	: Nylon

Colour	Part Number
Black	P8025-20-23
Brown	P8025-21-23
Red	P8025-22-23
Orange	P8025-23-23
Yellow	P8025-24-23
Green	P8025-25-23
Blue	P8025-26-23
Violet	P8025-27-23
Grey	P8025-28-23
White	P8025-29-23



Type 4: Vertical Ø2.03mm Press Fit

P8025B

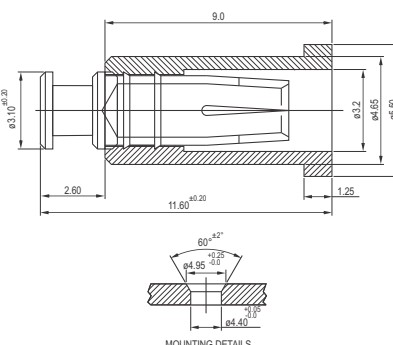
Specifications

Voltage Rating	: 800V
Current Rating	: 5.5A max.
Contact Resistance	: 4mΩ max.
Insulation Resistance	: 5000MΩ min.
Dielectric Withstanding	: 1000V rms.
Temperature Range	: -65°C to +85°C
Insertion Force	: 2.2Kg max.
Extraction Force	: 0.18Kg min

Material & Finish

Contact	: Beryllium Copper, Gold plated
Insulator	: Teflon

Colour	Part Number
Black	P8025B30-3K
Brown	P8025B31-3K
Red	P8025B32-3K
Orange	P8025B33-3K
Yellow	P8025B34-3K
Green	P8025B35-3K
Blue	P8025B36-3K
Violet	P8025B37-3K
Grey	P8025B38-3K
White	P8025B39-3K



4MM TEST POINT SINGLE CONTACT

Specifications

- Voltage Rating : 750V AC Peak
- Current Rating : 10A
- Contact Resistance : 2mΩ max.
- Insulation Resistance : 1000MΩ min.
at 500V DC
- Dielectric Withstanding : 1500V rms.
- Temperature Range : -40°C to +85°C
- Insertion Force : 1.0Kg max.
- Extraction Force : 0.5Kg min.



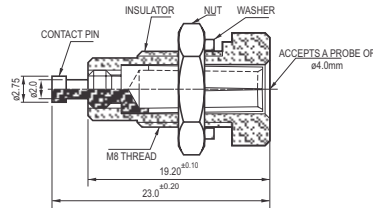
Material & Finish

- Contact : Phosphor Bronze, Gold Plated
- Insulator : Polypropylene/Nylon
- Nut : Brass, Nickel Plated
- Washer : Brass, Nickel Plated

4mm Panel Mounting Single Contact

P8023

Colour	Part Number	
	For Nylon	For Polypropylene
	Gold Plated	Gold Plated
Black	P8023-20-23	P8023-10-23
Brown	P8023-21-23	P8023-11-23
Red	P8023-22-23	P8023-12-23
Orange	P8023-23-23	P8023-13-23
Yellow	P8023-24-23	P8023-14-23
Green	P8023-25-23	P8023-15-23
Blue	P8023-26-23	P8023-16-23
Violet	P8023-27-23	P8023-17-23
Grey	P8023-28-23	P8023-18-23
White	P8023-29-23	P8023-19-23



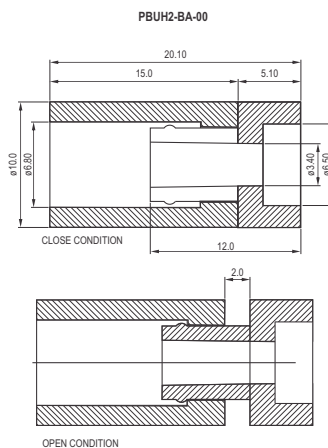
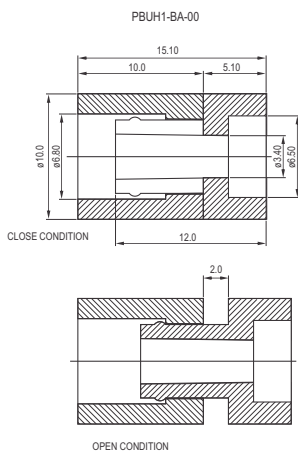
ONE TOUCH COLLAR BUSHING

PBUH Series

Material & Finish

Insulator: ABS, Natural color

Part Number	
L=10mm	L=15mm
PBUH1-BA-00	PBUH2-BA-00



TERMINAL BOARD SCREW TYPE DOUBLE ROW

Type 1: 15A

P8047

Specifications

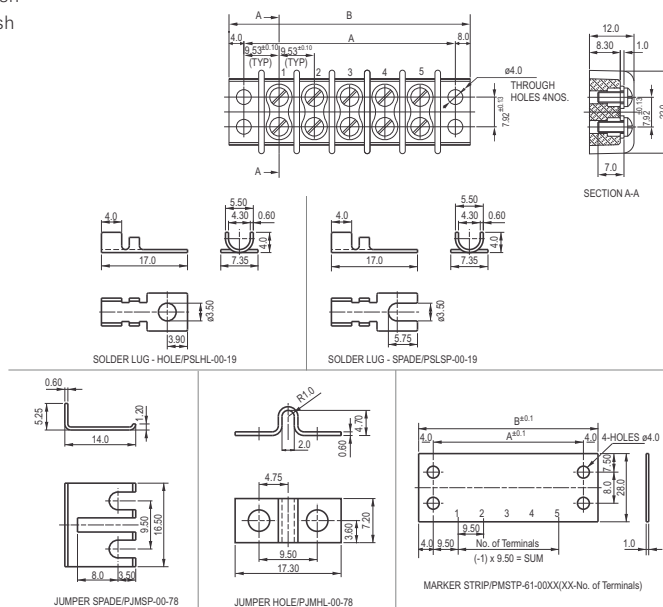
Voltage Rating : 300V AC rms. Max.
 Current Rating : 15A
 Insulation Resistance at 500V DC : 1000MΩ min.
 Dielectric Withstanding : 2000V AC rms.
 Temperature Range : - 65°C to +125°C

Material & Finish

Insulator : Glass Filled Thermoplastic Polyester
 Terminal Lugs : Brass, Tin Plated Over Copper Flash
 Screws : Brass, Nickel Plated Over Copper Flash
 Jumpers : Steel, Nickel Plated Over Copper Flash
 Marker Strip : Phenolic Nylon Filled



NO. OF TERMINALS	A ±0.40	A ±0.40	PROTECTRON PART NUMBER
2	28.58	36.12	P8047-50-1F02
3	38.10	45.64	P8047-50-1F03
4	47.63	55.17	P8047-50-1F04
5	57.15	65.07	P8047-50-1F05
6	66.68	74.63	P8047-50-1F06
7	76.20	84.12	P8047-50-1F07
8	85.73	93.68	P8047-50-1F08
9	95.66	103.17	P8047-50-1F09
10	105.18	112.73	P8047-50-1F10
11	114.76	122.22	P8047-50-1F11
12	124.23	131.78	P8047-50-1F12
13	133.76	141.27	P8047-50-1F13
14	143.28	150.83	P8047-50-1F14
15	152.81	160.32	P8047-50-1F15
16	162.33	169.88	P8047-50-1F16
17	171.86	179.43	P8047-50-1F17
18	181.38	188.93	P8047-50-1F18
19	190.91	198.83	P8047-50-1F19
20	200.80	208.36	P8047-50-1F20



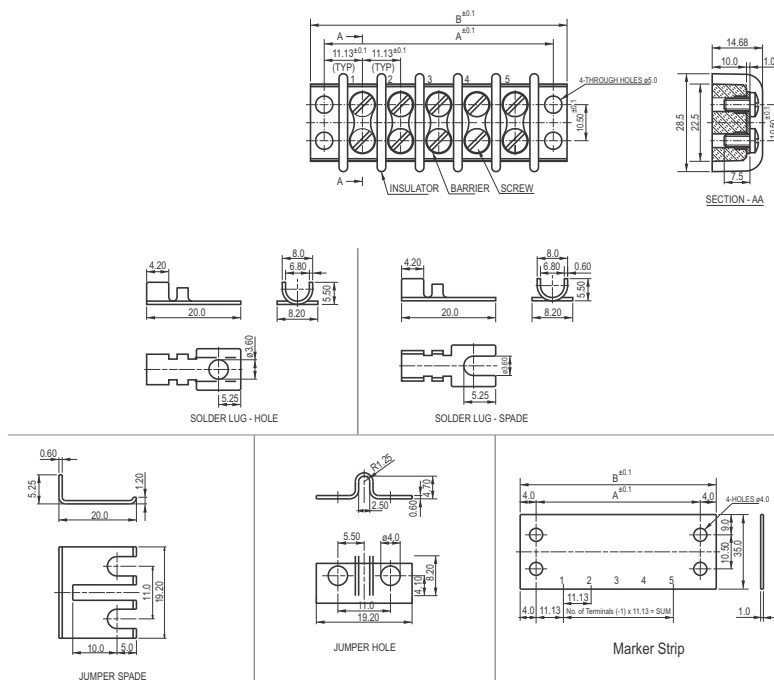
Type 2: 20A

P8047A

Specifications

Voltage Rating : 600V AC rms. Max.
 Current Rating : 20A
 Insulation Resistance at 500V DC : 1000MΩ min.
 Dielectric Withstanding : 2500V AC rms.
 Temperature Range : -65°C to +125°C

No. of Terminals	A ±0.1	B ±0.1	Part Number
4	55.65	63.65	P8047A50-1F04
5	66.78	77.78	P8047A50-1F05
6	77.91	85.91	P8047A50-1F06
7	89.04	97.04	P8047A50-1F07
8	100.17	108.17	P8047A50-1F08
9	111.30	119.30	P8047A50-1F09
10	122.43	130.43	P8047A50-1F10
12	144.69	152.69	P8047A50-1F12
14	166.95	174.95	P8047A50-1F14
16	189.21	197.21	P8047A50-1F16
18	211.47	219.47	P8047A50-1F18
20	233.73	241.73	P8047A50-1F20



COIN CELL BATTERY HOLDER

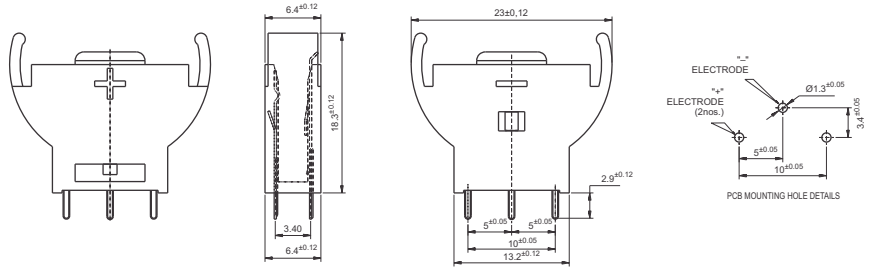
Vertical PBATH 1 - 20 - 19

Specifications/Key Features

- Coin Cell Holder, 3pin Vertical Type
- For CR2032 (Ø 20mm) Coin Cell
- Temperature Range: -50°C to +145°C

Material & Finish

Contact : Copper Alloy, Tin Plated
 Insulator : GF Nylon, UL 94V-0, Black



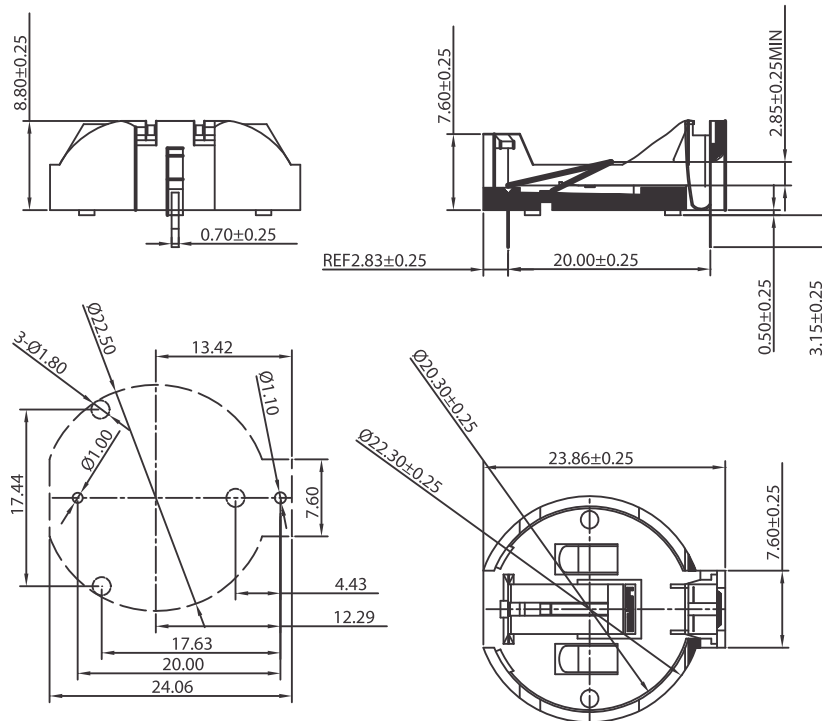
Horizontal PBATH 11 - 20 - 19

Specifications

Coin Battery holder horizontal mount type for CR2032

Material & Finish

Contact : Copper Alloy, Tin-Plated
 Insulator : Thermoplastic, UL94V-0, Black



RECOMMENDED PC BOARD LAYOUT
 TOLERANCE: ±0.05