

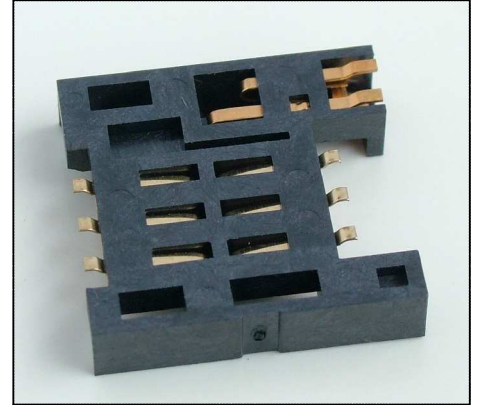


PROTECTRON ELECTROMECH (P) LTD

DESCRIPTION : SIM CARD HOLDER, 6PIN, WITH SWITCH,
ht=3.7mm

PART NO:PSIMC27-06-0S-6

RoHS



PHYSICAL DATA

| SL NO | DESCRIPTION | MATERIAL | QTY | REMARKS |
|-------|-------------|----------------|-----|--|
| 1 | HOUSING | LCP/PPS | 1 | LCP FOR REFLOW SOLDERING PPS FOR HAND SOLDERING |
| 2 | CONTACTS | PHOSPHORBRONZE | 6 | PLATING: Au OVER Ni |
| 3 | SWITCH 1 | PHOSPHORBRONZE | 1 | PLATING: Au OVER Ni |
| 4 | SWITCH 2 | PHOSPHORBRONZE | 1 | PLATING: Au OVER Ni |

ORDERING INFORMATION

PSIMC27-06-0S-6

MOQ- ----

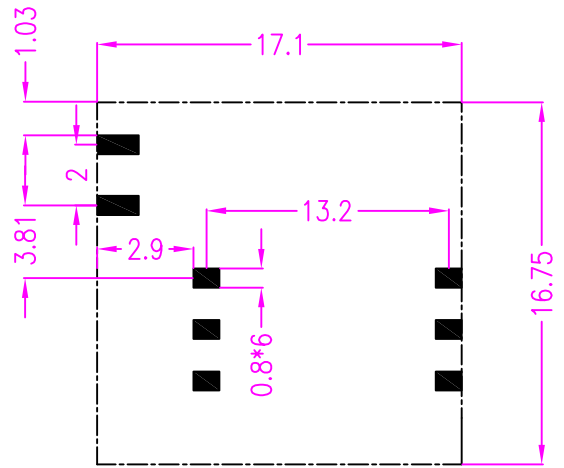
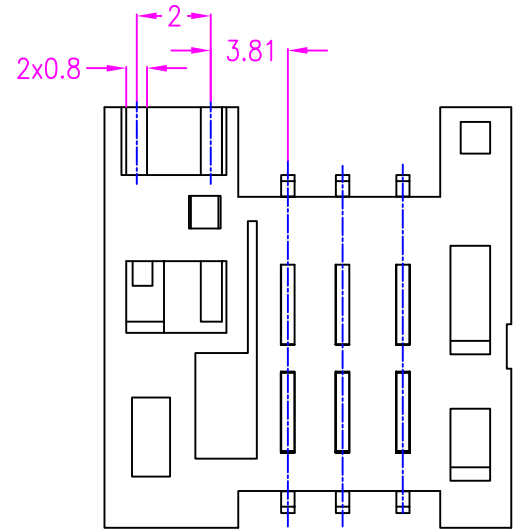
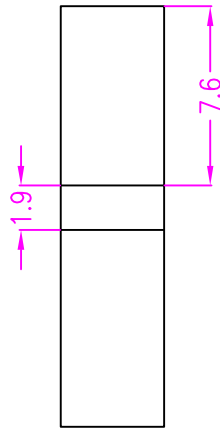
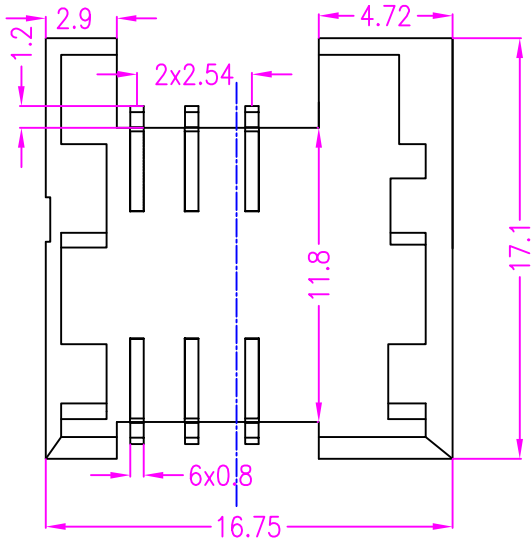
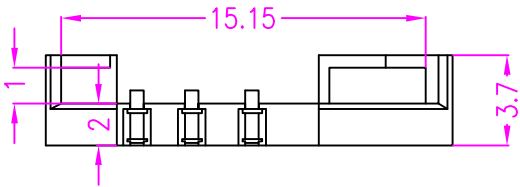
SPQ- ----



PROTECTRON ELECTROMECH (P) LTD

DESCRIPTION : SIM CARD HOLDER, 6PIN, WITH SWITCH,
ht=3.7mm

PART NO:PSIMC27-06-0S-6



PCB LAYOUT

REQUIREMENTS:

- 1.VISUAL INSPECTION:NO DIRT,NO STAIN,NO SCRATCH,NO DEFORMATION
- 2.NO BURR ON HOUSING PLASTIC, NO OXIDATION OR RUST ON TERMINALS

| | | | | | | | | |
|-----------------|----------|-------------|---------------|-------------------|---|------------|----------|----------|
| A | ORIGINAL | DESCRIPTION | | | AISHWARYA | 05.03.2015 | | |
| REV. | | | | | DRN BY | DATE | CK'ED BY | APP'D BY |
| Projection: | | Scale: NTS | Sht. Size: A4 | Gen. Tol.:±0.05mm | ALL DIMENSIONS ARE IN MM. IF UNLESS OTHERWISE SPECIFIED. | | | |