

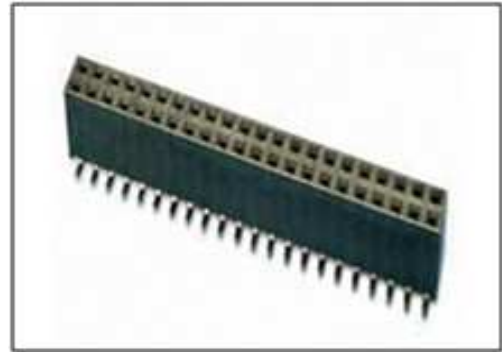


PROTECTRON ELECTROMECH (P) LTD

DESCRIPTION : FEMALE HEADER 1mm X 1mm PITCH, DOUBLE ROW, SMT

PART NO: P9445-XXX-21
XXX=NO. OF CONTACTS(10-120)

RoHS



PHYSICAL

INSULATION

MATERIAL : POLYESTER
FLAMMABILITY : UL94V-0
COLOR : BLACK

CONTACT

MATERIAL : COPPER ALLOY
SOLDER TAILS : GOLD PLATED
PACKAGING TYPE : TUBE/TRAY

ELECTRICAL

CURRENT RATING : 0.75A
INSULATION RESISTANCE : 500M OHMS MIN
DIELECTRIC WITHSTANDING : 500V AC/MIN
CONTACT RESISTANCE : 30m OHMS MAX

ENVIRONMENTAL DATA

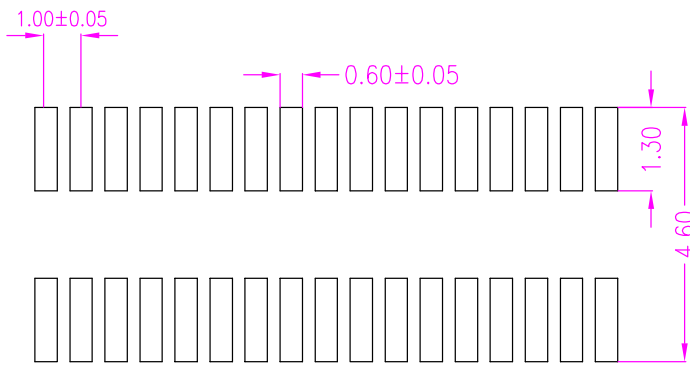
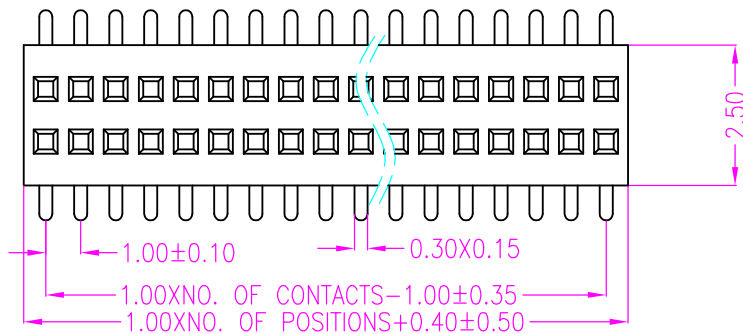
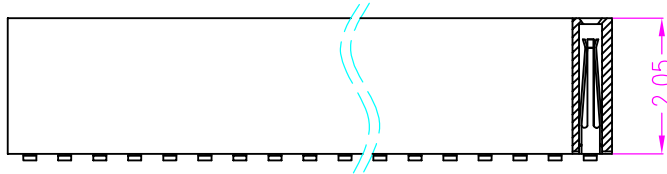
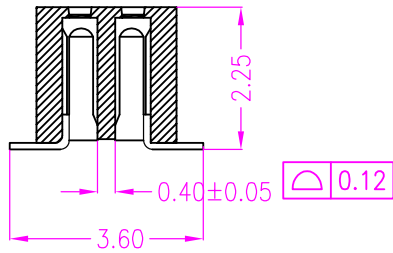
TEMPERATURE RANGE : -40° TO +105°C
PROCESS RATING : 260°C/5Sec



PROTECTRON ELECTROMECH (P) LTD

DESCRIPTION : FEMALE HEADER 1mm X 1mm PITCH, DOUBLE ROW, SMT

PART NO: P9445-XXX-21
XXX=NO. OF CONTACTS(10-120)



RECOMMENDED PCB LAYOUT (PCB TOLERANCE ±0.05)

ORDERING INFORMATION

P9445-XXX-21

NO OF CONTACTS
(010-120)

MOQ- ----

SPQ- ----

A	ORIGINAL	ANIL	25.04.2008		
REV.	DESCRIPTION			DRN. BY	APP'D BY
Projection: 		Scale: NTS	Sht. Size: A4	Gen. Tol.: ±0.4mm	ALL DIMENSIONS ARE IN MM. IF UNLESS OTHERWISE SPECIFIED.