



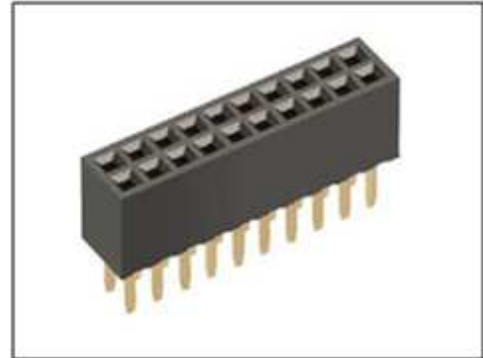
# PROTECTRON ELECTROMECH (P) LTD

DESCRIPTION : 1.27 x 1.27 FEMALE HEADER STRAIGHT

PART NO:P943XXXXX2-2X

X=1=SINGLE ROW/3=DOUBLE ROW  
X=H=A=3.40mm, X=H=B=4.30mm  
XXX=NO. OF CONTACTS(6-100)  
X=TYPE OF PLATING

RoHS



## PHYSICAL

### INSULATION

MATERIAL : POLYESTER  
FLAMMABILITY : UL94V-0  
COLOR : BLACK

### CONTACT

MATERIAL : PHOSPHOR BRONZE  
SOLDER TAILS : REFER TABLE  
PACKAGING TYPE : TUBE/TRAY

## ELECTRICAL

CURRENT RATING : 1A  
INSULATION RESISTANCE : 5000M OHMS MIN  
DIELECTRIC WITHSTANDING : 500V AC  
CONTACT RESISTANCE : 20m OHMS MAX

## ENVIRONMENTAL DATA

TEMPERATURE RANGE : -40°C TO +105°C  
PROCESS RATING : 260°C for 5secs

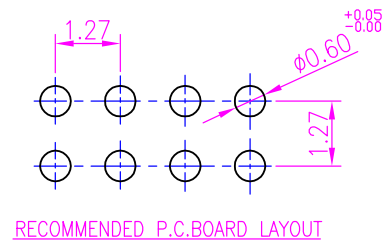
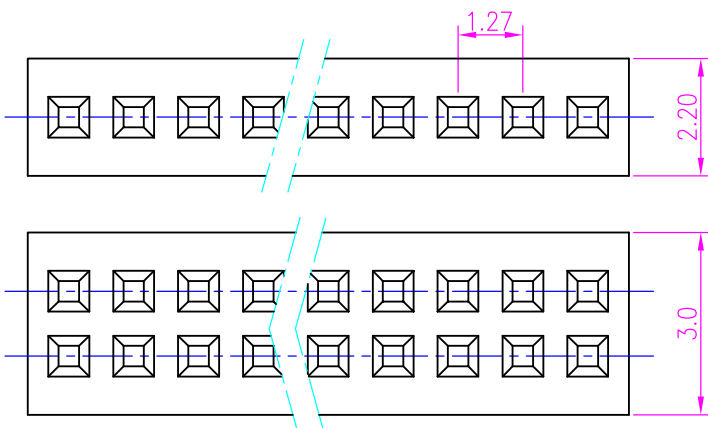
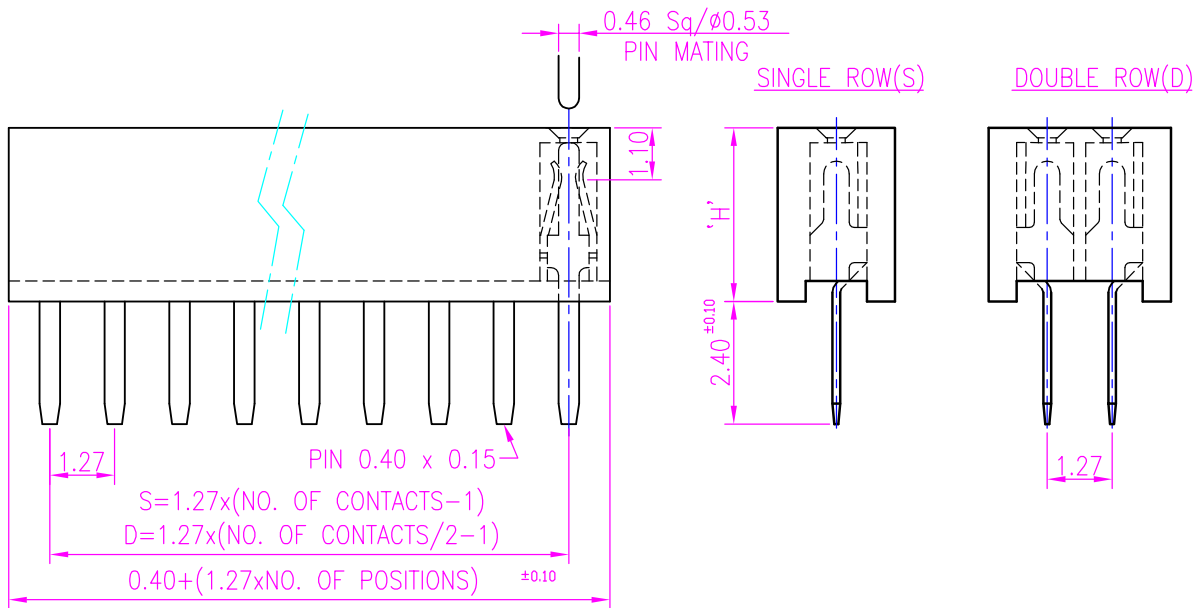


# PROTECTRON ELECTROMECH (P) LTD

DESCRIPTION : 1.27 x 1.27 FEMALE HEADER STRAIGHT

PART NO: P943XXXXX2-2X

X=1=SINGLE ROW/3=DOUBLE ROW  
 X=H=A=3.40mm, X=H=B=4.30mm  
 XXX=NO. OF CONTACTS(6-100)  
 X=TYPE OF PLATING



A	ORIGINAL		SACHIN	04.02.2004		
REV.	DESCRIPTION			DRN. BY	DATE	CK'ED BY APP'D BY
Projection: 		Scale: NTS	Sht. Size: A4	Gen. Tol.: ±0.4mm	ALL DIMENSIONS ARE IN MM. IF UNLESS OTHERWISE SPECIFIED.	

<http://www.protectron.in>  
 protectron@protectron.in



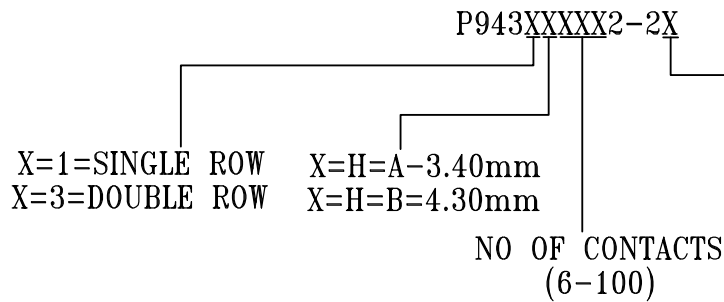
# PROTECTRON ELECTROMECH (P) LTD

DESCRIPTION : 1.27 x 1.27 FEMALE HEADER STRAIGHT

PART NO:P943XXXXX2-2X

X=1=SINGLE ROW/3=DOUBLE ROW  
X=H=A=3.40mm, X=H=B=4.30mm  
XXX=NO. OF CONTACTS(6-100)  
X=TYPE OF PLATING

## ORDERING INFORMATION



### Type of plating(XX)

21	Gold Plating
22	0.75µ GOLD
23	Gold on contact side & Tin on solder side
24	5µ Tin

MATES WITH

P9133

MOQ- ----

SPQ- ----