

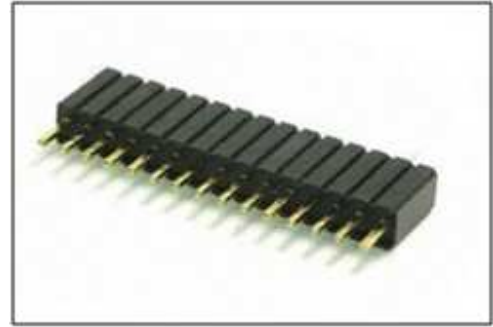


# PROTECTRON ELECTROMECH (P) LTD

**DESCRIPTION : FEMALE HEADER 1.27mmPITCH, SINGLE ROW,  
STRAIGHT PROFILE 4.60mm**

**PART NO: P9431-XXXX-XX**  
1st XXX=NO. OF CONTACTS(3-40NOS.)  
2nd X=DIMENSION(B)  
3rd XX=TYPE OF PLATING

**RoHS**



## PHYSICAL

<b>INSULATION</b>	:	
MATERIAL	:	POLYESTER
FLAMMABILITY	:	UL94V-0
COLOR	:	BLACK
<b>CONTACT</b>	:	
MATERIAL	:	PHOSPHOR BRONZE
SOLDER TAILS	:	REFER TABLE
<b>PACKAGING TYPE</b>	:	TUBE/TRAY

## ELECTRICAL

<b>CURRENT RATING</b>	:	1A
<b>INSULATION RESISTANCE</b>	:	5000M OHMS MIN
<b>DIELECTRIC WITHSTANDING</b>	:	500V AC
<b>CONTACT RESISTANCE</b>	:	20m OHMS MAX

## ENVIRONMENTAL DATA

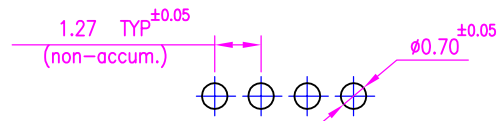
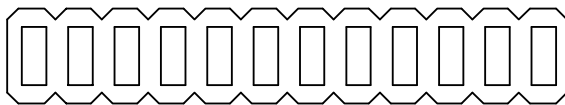
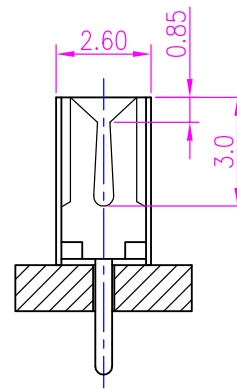
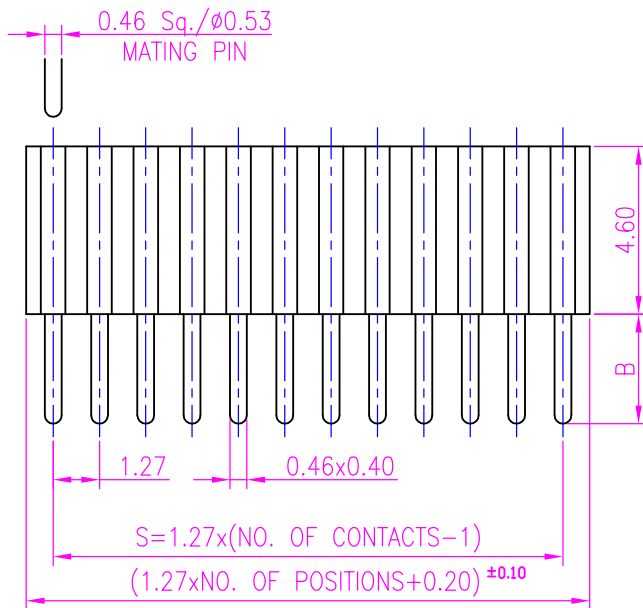
<b>TEMPERATURE RANGE</b>	:	-40°C TO +105°C
<b>PROCESS RATING</b>	:	180°C FOR 5SEC



# PROTECTRON ELECTROMECH (P) LTD

DESCRIPTION : FEMALE HEADER 1.27mmPITCH, SINGLE ROW,  
STRAIGHT PROFILE 4.60mm

PART NO: P9431-XXXX-XX  
1st XXX=NO. OF CONTACTS(3-40NOS.)  
2nd X=DIMENSION(B)  
3rd XX=TYPE OF PLATING



RECOMMENDED P.C.B LAYOUT

A	ORIGINAL	SACHIN		04.02.2004		
REV.	DESCRIPTION			DRN. BY	DATE	CK'ED BY APP'D BY
Projection: 		Scale: NTS	Sht. Size: A4	Gen. Tol.: ±0.35mm	ALL DIMENSIONS ARE IN MM. IF UNLESS OTHERWISE SPECIFIED.	



# PROTECTRON ELECTROMECH (P) LTD

DESCRIPTION : FEMALE HEADER 1.27mmPITCH, SINGLE ROW,  
STRAIGHT PROFILE 4.60mm

PART NO: P9431-XXXX-XX  
1st XXX=NO. OF CONTACTS(3-40NOS.)  
2nd X=DIMENSION(B)  
3rd XX=TYPE OF PLATING

### ORDERING INFORMATION

P9431-XXXX-XX

NO OF CONTACTS  
(03-40)

B	DIMENSION
1	1.50
2	2.40
3	3.0

Type of plating(XX)	
21	Gold flash
22	0.25μ Au
23	Gold on contact side & Tin on solder side
24	5μ Tin

#### MATES WITH

P9131,P9132  
P9136

MOQ- ----

SPQ- ----