

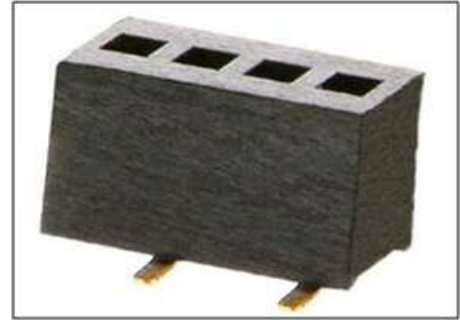


PROTECTRON ELECTROMECH (P) LTD

**DESCRIPTION : FEMALE HEADER 2.0mm PITCH SINGLE ROW,
SMT**

PART NO: P9416-XX-2X
XX=NO. OF CONTACTS(4-40)
X=TYPE OF PLATING

RoHS



PHYSICAL

INSULATION

MATERIAL : GLASS FILLED POLYESTER
FLAMMABILITY : UL94V-0
COLOR : BLACK

CONTACT

MATERIAL : COPPER ALLOY
SOLDER TAILS : REFER TABLE
PACKAGING TYPE : TUBE/TRAY

ELECTRICAL

CURRENT RATING : 1A
INSULATION RESISTANCE : 5000M OHMS MIN
DIELECTRIC WITHSTANDING : 500V AC/MIN
CONTACT RESISTANCE : 20m OHMS MAX

MECHANICAL DATA

INSERTION FORCE : 0.7N AVG.
WITHDRAWAL FORCE : 0.5N AVG.
MECHANICAL LIFE : 100 CYCLES/MIN

ENVIRONMENTAL DATA

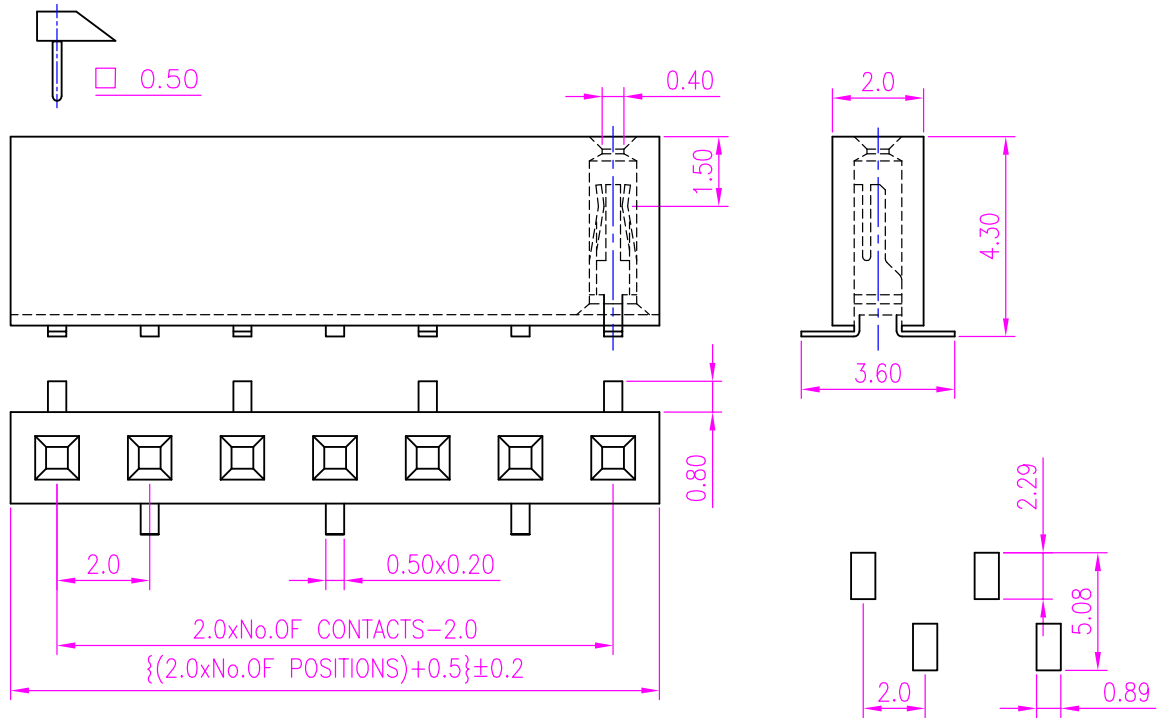
TEMPERATURE RANGE : -40°C TO +105°C
PROCESS RATING : 180°C FOR 5SEC



PROTECTRON ELECTROMECH (P) LTD

DESCRIPTION : FEMALE HEADER 2.0mm PITCH SINGLE ROW,
SMT

PART NO: P9416-XX-2X
XX=NO. OF CONTACTS(4-40)
X=TYPE OF PLATING



RECOMMENDED P.C.B LAYOUT

A	ORIGINAL		SACHIN	31.07.2004		
REV.	DESCRIPTION			DRN. BY	DATE	APP'D BY
Projection: 		Scale: NTS	Sht. Size: A4	Gen. Tol.: ±0.35mm	ALL DIMENSIONS ARE IN MM. IF UNLESS OTHERWISE SPECIFIED.	



PROTECTRON ELECTROMECH (P) LTD

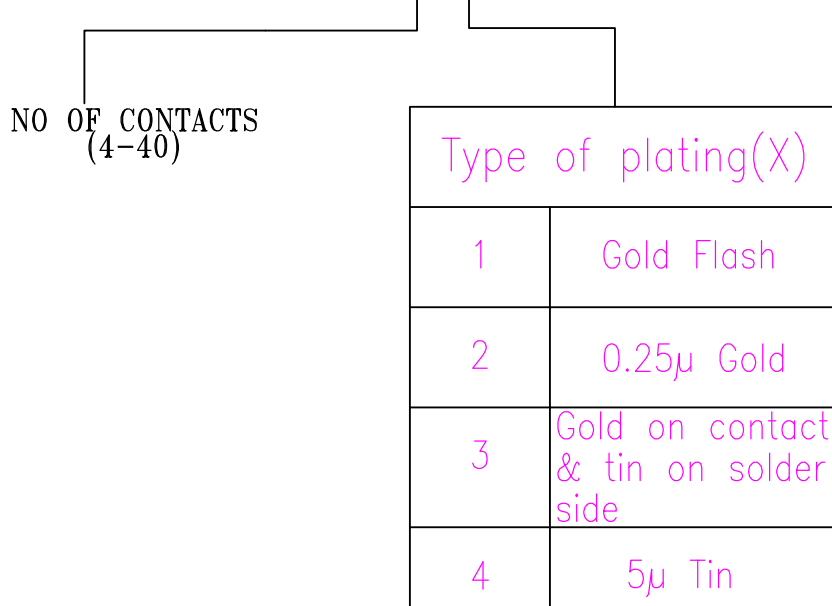
DESCRIPTION : FEMALE HEADER 2.0mm PITCH SINGLE ROW,
SMT

PART NO: P9416-XX-2X

XX=NO. OF CONTACTS(4-40)
X=TYPE OF PLATING

ORDERING INFORMATION

P9416-XX-2X



MATES WITH

P9111,P9112
P9111A,P9112A
P9115,P9117
P9119

MOQ- ----

SPQ- ----