

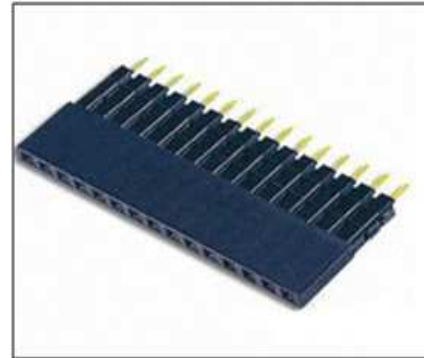


PROTECTRON ELECTROMECH (P) LTD

DESCRIPTION : FEMALE HEADER 2.54mm PITCH, ELEVATED TYPE, SINGLE ROW

PART NO:P940XXXX2X
1st X=S/D/T
2nd XXX=NO. OF CONTACTS(9-120)
3rd X=ABOVE/BELOW LENGTH
4th 2X=TYPE OF PLATING

RoHS



PHYSICAL

INSULATION	:	
MATERIAL	:	POLYESTER
FLAMMABILITY	:	UL94V-0
COLOR	:	BLACK
CONTACT	:	
MATERIAL	:	PHOSPHOR BRONZE
SOLDER TAILS	:	REFER TABLE
PACKAGING TYPE	:	TUBE/TRAY

ELECTRICAL

CURRENT RATING	:	3A
INSULATION RESISTANCE	:	5000M OHMS MIN
DIELECTRIC WITHSTANDING	:	1000V AC/MIN
CONTACT RESISTANCE	:	20m OHMS MAX

MECHANICAL DATA

INSERTION FORCE	:	200g max.
EXTRACTION FORCE	:	20g min.
MECHANICAL LIFE	:	100 CYCLES min.

ENVIRONMENTAL DATA

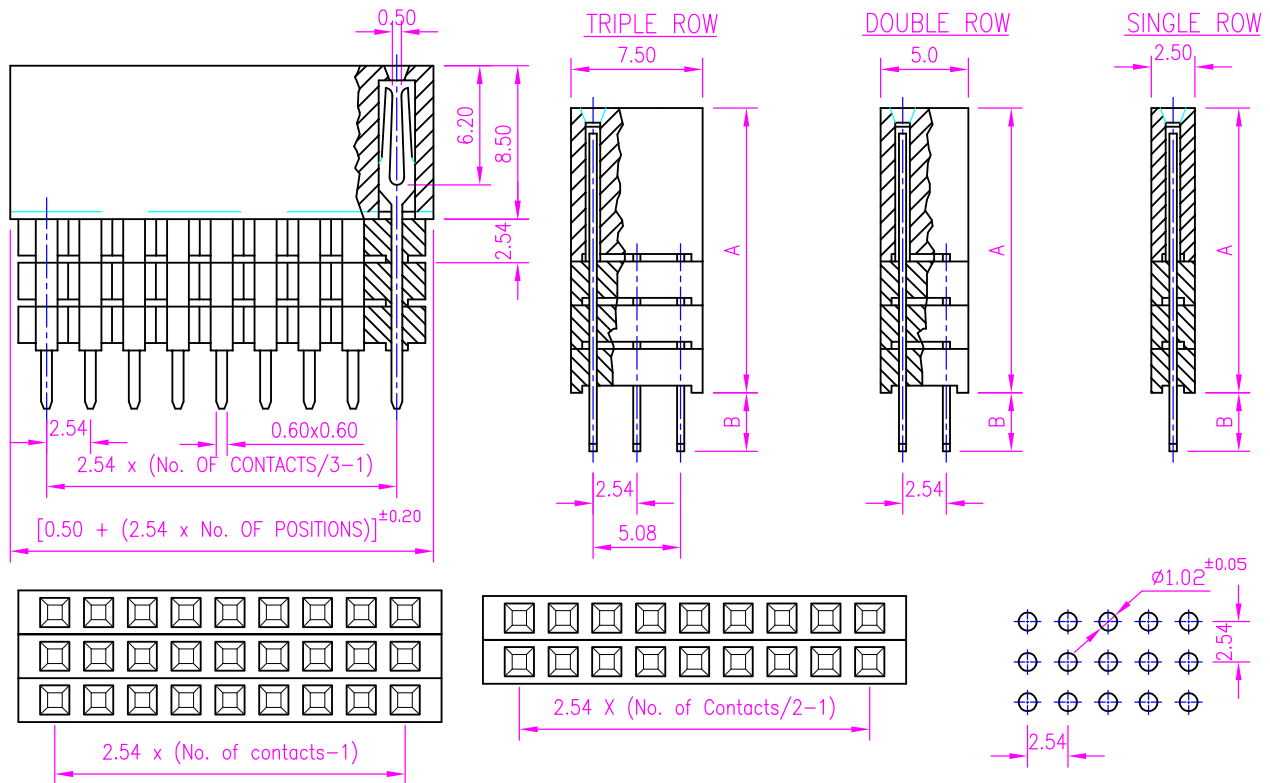
TEMPERATURE RANGE	:	-40°C TO +105°C
PROCESS RATING	:	180°C FOR 5SEC



PROTECTRON ELECTROMECH (P) LTD

DESCRIPTION : FEMALE HEADER 2.54mm PITCH, ELEVATED TYPE, SINGLE ROW

PART NO: P940XXXXX2X
 1st X=S/D/T
 2nd XXX=NO. OF CONTACTS(9-120)
 3rd X=ABOVE/BELOW LENGTH
 4th 2X=TYPE OF PLATING



RECOMMENDED P.C.B. LAYOUT

A2	FOR THE P/N: P940DXXXA21 REFER NEW DRAWING.	ANIL	30.03.2009		
A1	DIMENSIONS I & J INCLUDED, PLATING THICKNESS CHANGED FROM 0.25μ TO 0.75μ	SANDHYA	05.11.2005		
A	ORIGINAL	SACHIN	27.01.2004		
REV.	DESCRIPTION	DRN. BY	DATE	CK'ED BY	APP'D BY



Scale: NTS

Sht. Size: A4

Gen. Tol.: ±0.35mm

ALL DIMENSIONS ARE IN MM.
IF UNLESS OTHERWISE SPECIFIED.



PROTECTRON ELECTROMECH (P) LTD

DESCRIPTION : FEMALE HEADER 2.54mm PITCH, ELEVATED TYPE, SINGLE ROW

PART NO: P940XXXXX2X
1st X=S/D/T
2nd XXX=NO. OF CONTACTS(9-120)
3rd X=ABOVE/BELOW LENGTH
4th 2X=TYPE OF PLATING

X=ELEVATED TYPE A/B

A	11.05/2.3mm
B	11.05/7.35mm
C	11.05/12.2mm
D	13.59/4.85mm
E	13.59/9.65mm
F	16.13/2.3mm
G	15.13/7.1mm
H	18.67/4.6mm
I	16.13/4.6mm
J	21.16/2.3mm
K	16.13/7.10mm

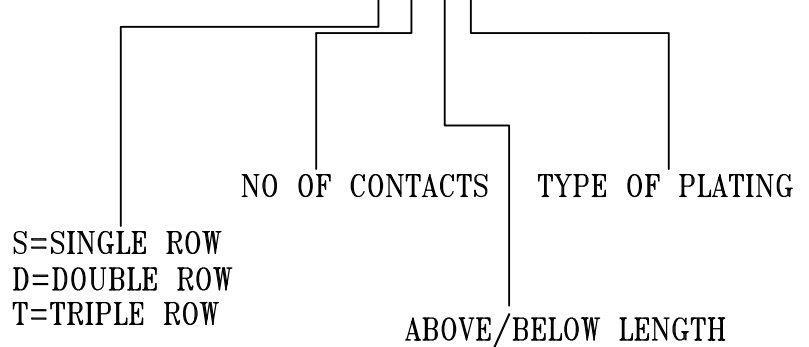
XX	PLATING
21	GOLD
22	0.75µ Au
23	Selective
24	5µ TIN

MATES WITH

P9101,P9102
P9107,P9109

ORDERING INFORMATION

P940XXXXX2X



MOQ- ----

SPQ- ----