



PROTECTRON ELECTROMECH (P) LTD

**DESCRIPTION : 2.54mm PITCH FEMALE HEADER, SINGLE ROW
SURFACE MOUNT**

PART NO:P9406-XX-2X
1st XX=NO. OF CONTACTS(3-40)
2nd 2X=TYPE OF PLATING

RoHS



PHYSICAL

INSULATION

MATERIAL : GLASS FILLED POLYESTER
FLAMMABILITY : UL94V-0
COLOR : BLACK

CONTACT

MATERIAL : COPPER ALLOY
SOLDER TAILS : REFER TABLE
PACKAGING TYPE : TUBE/TRAY

ELECTRICAL

CURRENT RATING : 3A
INSULATION RESISTANCE : 5000M OHMS MIN
DIELECTRIC WITHSTANDING : 500V AC
CONTACT RESISTANCE : 20m OHMS MAX

MECHANICAL DATA

INSERTION FORCE : 200g max.
EXTRACTION FORCE : 20g min.
MECHANICAL LIFE : 100 CYCLES min.

ENVIRONMENTAL DATA

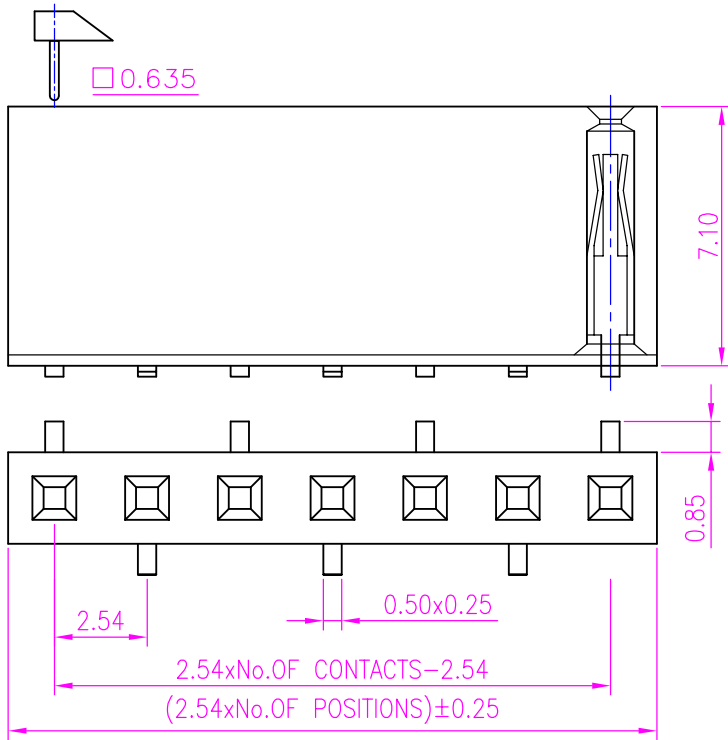
TEMPERATURE RANGE : -40°C TO +105°C
PROCESS RATING : 180°C FOR 5SEC



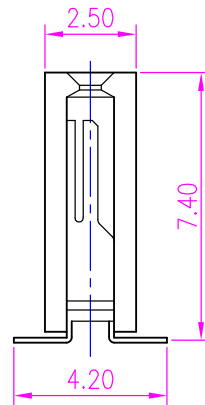
PROTECTRON ELECTROMECH (P) LTD

DESCRIPTION : 2.54mm PITCH FEMALE HEADER, SINGLE ROW
SURFACE MOUNT

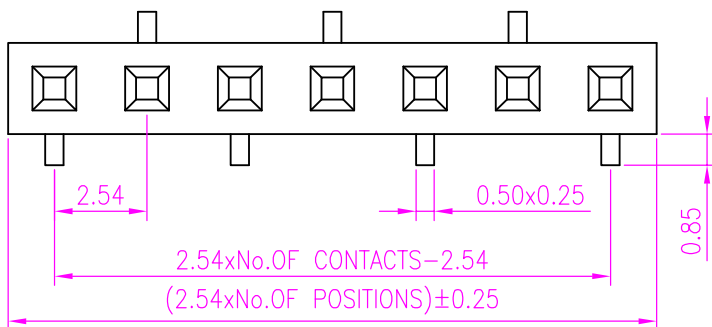
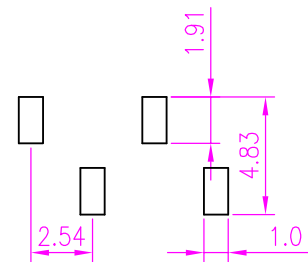
PART NO: P9406-XX-2X
1st XX=NO. OF CONTACTS(3-40)
2nd 2X=TYPE OF PLATING



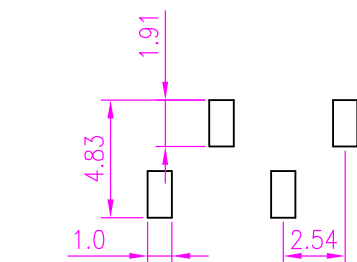
TYPE 1



RECOMMENDED P.C.B LAYOUT



TYPE 2



RECOMMENDED P.C.B LAYOUT

A	ORIGINAL		SACHIN	30.07.2004		
REV.	DESCRIPTION			DRN. BY	DATE	CK'ED BY APP'D BY
Projection: 		Scale: NTS	Sht. Size: A4	Gen. Tol.: ±0.35mm	ALL DIMENSIONS ARE IN MM. IF UNLESS OTHERWISE SPECIFIED.	



PROTECTRON ELECTROMECH (P) LTD

DESCRIPTION : 2.54mm PITCH FEMALE HEADER, SINGLE ROW
SURFACE MOUNT

PART NO: P9406-XX-2X

1st XX=NO. OF CONTACTS(3-40)

2nd 2X=TYPE OF PLATING

ORDERING INFORMATION

P9406-XX-2X

NO OF CONTACTS
(3-40)

XX	PLATING
21	GOLD FLASH
22	0.25 μ GOLD
23	GOLD FLASH ON CONTACT SIDE & TIN ON SOLDER SIDE
24	5 μ TIN

MATES WITH

P9101,P9102
P9107,P9109

MOQ- ----

SPQ- ----