



PROTECTRON ELECTROMECH (P) LTD

DESCRIPTION : PIN HEADER, 2.54mm PITCH, SINGLE ROW STRAIGHT

PART NO:P9101-XX-XX-X
1st XX=NO OF CONTACTS(1-40)
2nd XX=ABOVE/BELOW LENGTH
3rd X=PLATING

RoHS



PHYSICAL

INSULATION	:	
MATERIAL	:	GLASS FILLED POLYESTER
FLAMMABILITY	:	UL94V-0
COLOR	:	BLACK
CONTACT	:	
MATERIAL	:	COPPER ALLOY
SOLDER TAILS	:	REFER TABLE
PACKAGING TYPE	:	TUBE/TRAY

ELECTRICAL

CURRENT RATING	:	5A
INSULATION RESISTANCE	:	1000M OHMS MIN
DIELECTRIC WITHSTANDING	:	200V AC for 1minute

MECHANICAL DATA

PIN RETENTION FORCE	:	1kg. MIN
---------------------	---	----------

ENVIRONMENTAL DATA

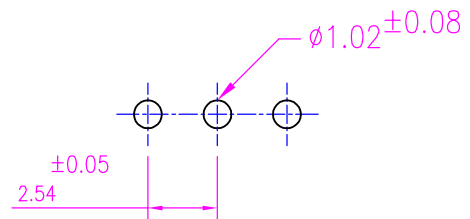
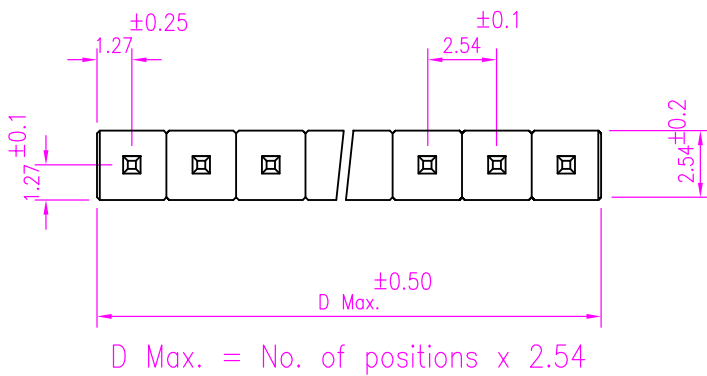
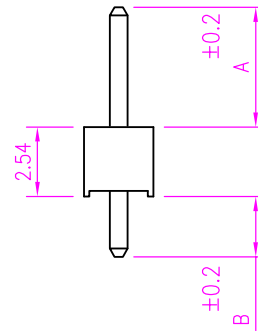
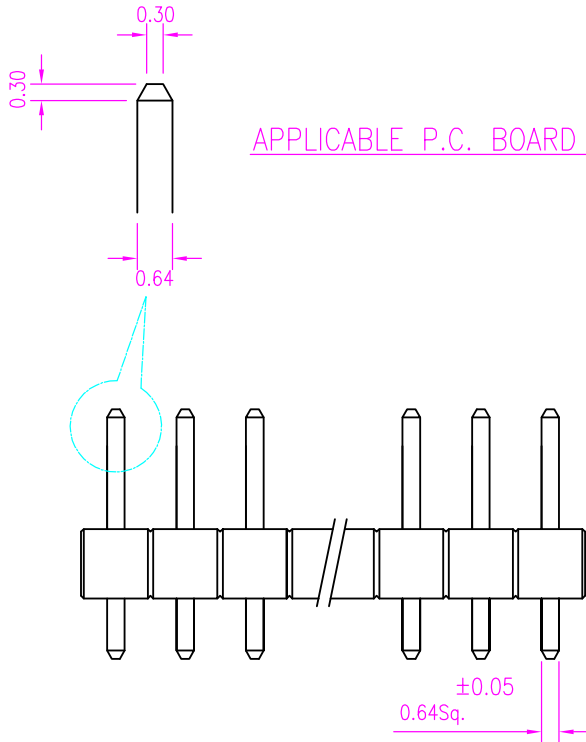
TEMPERATURE RANGE	:	-40°C TO +105°C
PROCESS RATING	:	180°C FOR 5SEC



PROTECTRON ELECTROMECH (P) LTD

DESCRIPTION : PIN HEADER, 2.54mm PITCH, SINGLE ROW STRAIGHT

PART NO: P9101-XX-XX-X
 1st XX=NO OF CONTACTS(1-40)
 2nd XX=ABOVE/BELOW LENGTH
 3rd X=PLATING



RECOMMENDED P.C.B. LAYOUT

A5	UL94V-0 INCLUDED & OPTIONS 'D5' TO 'F2' ADDED TO TABLE A & 'B4' TO 'C2' TO TABLE B	LOKANATH	16.02.2010	SACHIN	V.RAMANI
A4	OPTIONS 'C6' to 'D4' ADDED TO TABLE A, 'A9' to 'B3' ADDED TO B	ANIL	10.03.2008	SACHIN	SURINDRA
A3	TOLERANCE ADDED	SACHIN	24.08.2007	SANDHYA	SURINDRA
A2	X=PLATING OPTIONS 8,9 ADDED, 5,6-CORRECTED AS REQUIRED	SANDHYA	08.04.2006	SANDHYA	SURINDRA
A1	OPTIONS 'T' to 'A4' ADDED TO TABLE A, 'J' to 'Q' ADDED TO B & SHEET 2 OF 2 INCLUDED	SAMSON	15.02.2002	SAMSON	SURINDRA
A	ORIGINAL	SAMSON	14.12.2000	SAMSON	SURINDRA
REV.	DESCRIPTION	DRN. BY	DATE	CK'ED BY	APP'D BY



Scale: NTS

Sht. Size: A4

Gen. Tol.: ±0.35mm

ALL DIMENSIONS ARE IN MM.
IF UNLESS OTHERWISE SPECIFIED.



PROTECTRON ELECTROMECH (P) LTD

DESCRIPTION : PIN HEADER, 2.54mm PITCH, SINGLE ROW
STRAIGHT

PART NO: P9101-XX-XX-X
1st XX=NO OF CONTACTS(1-40)
2nd XX=ABOVE/BELOW LENGTH
3rd X=PLATING

A ±0.2		B ±0.2	
ABOVE LENGTH		BELOW LENGTH	
1	5.84	1	2.80
2	6.06	2	3.00
3	6.80	3	3.60
4	7.06	4	4.90
5	10.50	5	3.20
6	15.90	6	3.80
7	7.50	7	2.60
8	15.50	8	5.20
9	3.30	9	6.20/6.0
A	2.80	A	2.20
B	23.90	B	7.50
C	9.00	C	10.00
D	4.90	D	4.50
E	2.60	E	6.80
F	8.80	F	15.00
G	16.20	G	9.40
H	6.60	H	2.54
I	8.07	I	21.60
J	3.80	J	5.00
K	17.50	K	17.00
L	13.20	L	7.00
M	19.10	M	4.30
N	9.40	N	12.50
P	14.10	O	2.40
Q	5.60	P	1.20
R	12.50	Q	5.84
S	12.16	R	3.46
T	19.80	S	2.30
U	8.50	T	4.70
V	4.70	U	7.13
W	6.20	V	8.00
X	7.20	W	8.50
Y	12.80	X	5.50
Z	6.45	Y	12.70
A0	3.00	Z	1.80
A1	4.00	A0	6.50
A2	7.70	A1	3.90
A3	3.6/3.7	A2	10.9/11.0

A ±0.2		B ±0.2	
ABOVE LENGTH		BELOW LENGTH	
A4	5.20	A3	16.50
A5	19.60	A4	10.41
A6	4.40	A5	10.16
A7	9.93	A6	5.72
A8	15.00	A7	0
A9	18.10	A8	11.74
B1	12.00	A9	7.73
B2	13.80	B0	4.00
B3	5.08	B1	19.50
B4	11.60	B2	8.86
B5	29.60	B3	12.00
B6	24.60	B4	0.80
B7	11.40	B5	2.00
B8	10.16	B6	13.70
B9	3.46	B7	14.00
C1	11.80	B8	2.90
C2	1.50	B9	14.70
C3	25.90	C0	7.30
C4	14.50	C1	2.75
C5	29.30	C2	16.30
C6	19.26		
C7	12.92		
C8	8.2 ^{+0.3} _{-0.1}		
C9	9.65		
D1	4.8		
D2	0.8		
D3	13.00		
D4	11.00		
D5	17.36		
D6	27.46		
D7	13.46		
D8	0.00		
D9	15.74		
E0	2.00		
E1	10.3		
E2	4.20		
E5	0.50		
E6	18.60		



PROTECTRON ELECTROMECH (P) LTD

DESCRIPTION : PIN HEADER, 2.54mm PITCH, SINGLE ROW STRAIGHT

PART NO: P9101-XX-XX-X
1st XX=NO OF CONTACTS(1-40)
2nd XX=ABOVE/BELOW LENGTH
3rd X=PLATING

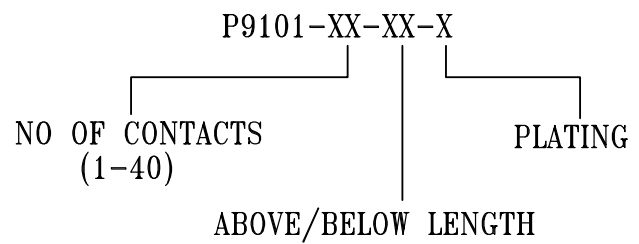
A ±0.2		B ±0.2
ABOVE LENGTH		BELOW LENGTH
E7	3.40	
E8	28.45	
E9	14.70	
F0	4.62	
F1	17.85	
F2	10.80	

Type of plating(X)	
1	Gold Flash
2	0.75µ Au
3	1.27µ Au
4	5µ Sn

MATES WITH

P9401,P9402,P9401A
P9402A,P9401I,P9409
P9406,P9501,P9502
P9301,P9305

ORDERING INFORMATION



MOQ- ----
SPQ- ----