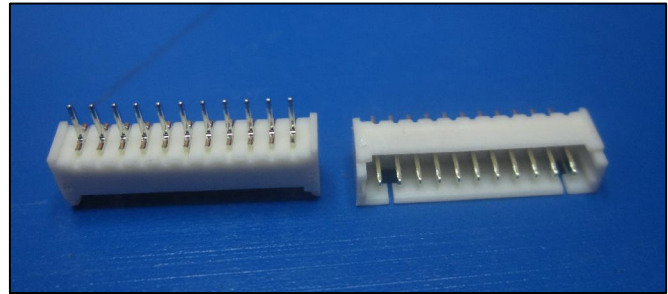


DESCRIPTION :1.25mm PITCH WIRE TO BOARD CONNECTOR,
STRAIGHT

PART NO:P9056S29-19-X
X=NO. OF WAYS

RoHS



PHYSICAL

INSULATION

MATERIAL : NYLON
FLAMMABILITY : UL94V-0
COLOR : NATURAL COLOR

CONTACT

MATERIAL : COPPER ALLOY
SOLDER TABS : TIN PLATED

PACKAGING TYPE : BULK PACKING

ELECTRICAL

CURRENT RATING : 1A
INSULATION RESISTANCE : 100M OHMS MIN
DIELECTRIC WITHSTANDING : 250V AC/MIN
CONTACT RESISTANCE : 20m OHMS MAX
VOLTAGE RATING : 100V AC/DC

ENVIRONMENTAL DATA

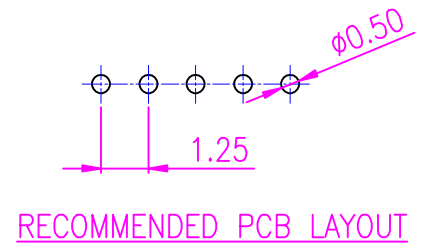
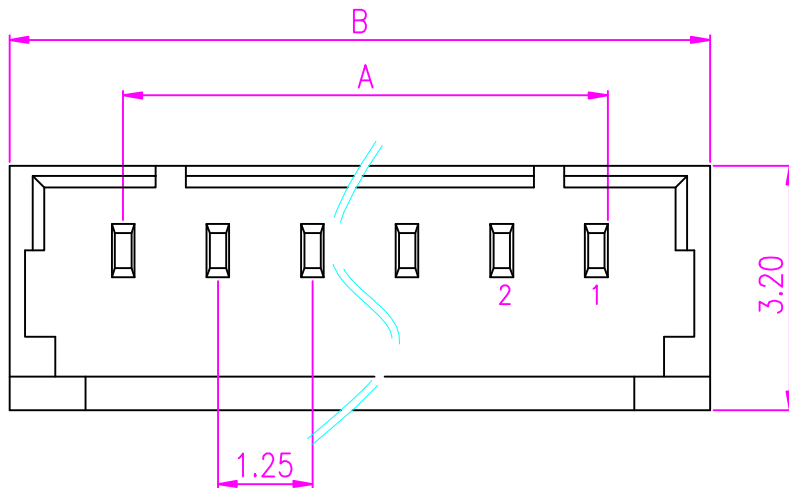
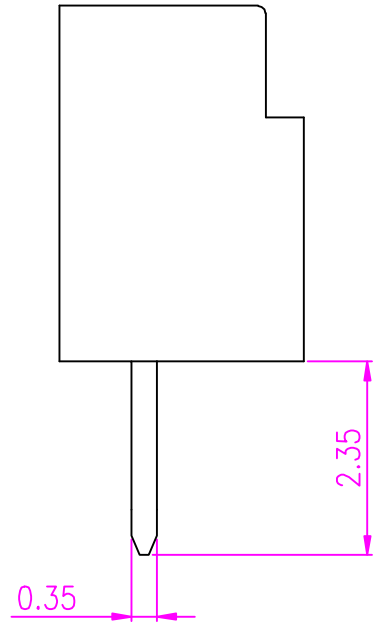
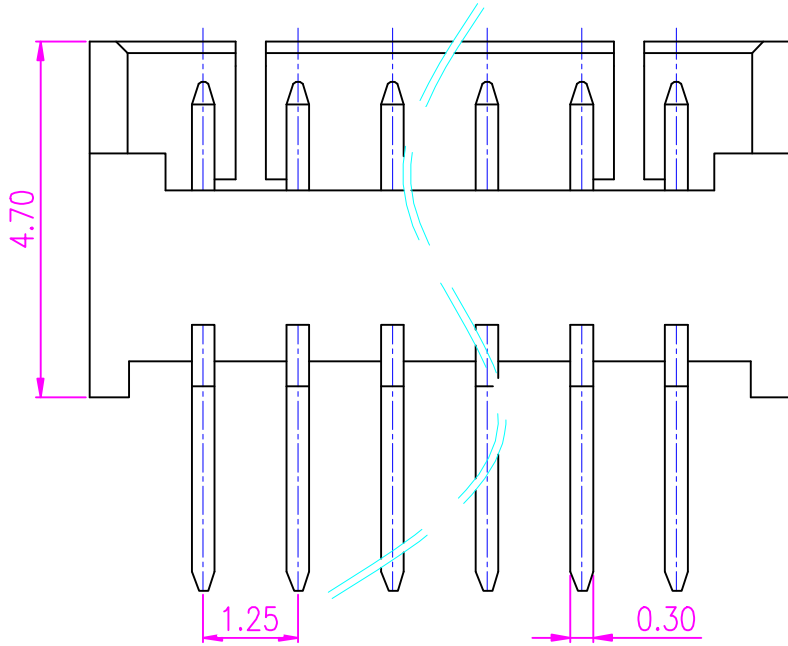
TEMPERATURE RANGE : -25° TO +85° C
PROCESS RATING : 230°C FOR 5SEC



PROTECTRON ELECTROMECH (P) LTD

DESCRIPTION :1.25mm PITCH WIRE TO BOARD CONNECTOR,
STRAIGHT

PART NO:P9056S29-19-X
X=NO. OF WAYS



A	ORIGINAL	CHETAN	25.05.2011		
REV.	DESCRIPTION	DRN BY	DATE	CKED BY	APP'D BY
Projection: 	Scale: NTS	Sht. Size: A4	Gen. Tol.: ±0.35mm ±0.2'	ALL DIMENSIONS ARE IN MM. IF UNLESS OTHERWISE SPECIFIED.	

DESCRIPTION :1.25mm PITCH WIRE TO BOARD CONNECTOR,
STRAIGHT

PART NO:P9056S29-19-X
X=NO. OF WAYS

ORDERING INFORMATION

P9056S29-19-X

NO OF WAYS

CIRCUIT	DIM.A(mm)	DIM.B(mm)
2	1.25	4.25
3	2.50	5.50
4	3.75	6.75
5	5.00	8.00
6	6.25	9.25
7	7.50	10.50
8	8.75	11.75
9	10.00	13.00
A=10	11.25	14.25
B=11	12.50	15.50
C=12	13.75	16.75
D=13	15.00	18.00
E=14	16.25	19.25
F=15	17.50	20.50

MATES WITH

P9056H / P9056T

MOQ- ----

SPQ- ----