

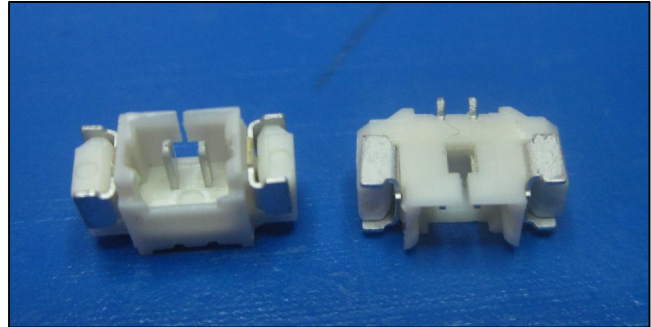


# PROTECTRON ELECTROMECH (P) LTD

DESCRIPTION : 1.25mm PITCH WIRE TO BOARD HEADER,  
SURFACE MOUNT TYPE ,STRAIGHT

PART NO:P9056M29-19-X  
X=NO. OF WAYS(2-18)

RoHS



## PHYSICAL DATA

### INSULATION

MATERIAL : NYLON  
FLAMMABILITY : UL94V-0  
COLOR : NATURAL COLOR

### CONTACT

MATERIAL : PHOSPHOR BRONZE, TIN PLATED  
SOLDER TABS : PHOSPHOR BRONZE, TIN PLATED

### PACKAGING TYPE

: BULK PACKING

## ELECTRICAL DATA

**CURRENT RATING** : 1A  
**INSULATION RESISTANCE** : 500M OHMS MIN  
**DIELECTRIC WITHSTANDING** : 500V AC/MIN  
**CONTACT RESISTANCE** : 20m OHMS MAX  
**VOLTAGE RATING** : 125V AC/DC

## ENVIRONMENTAL DATA

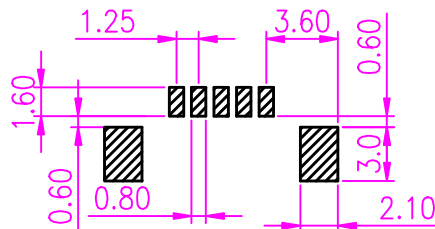
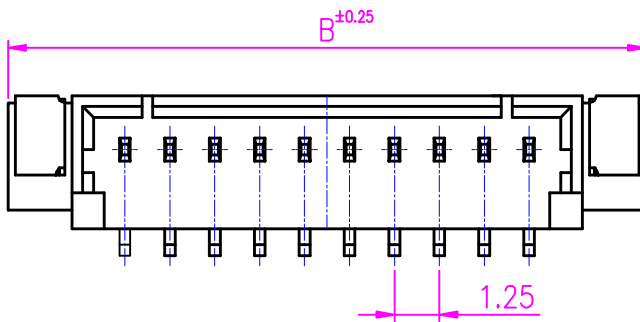
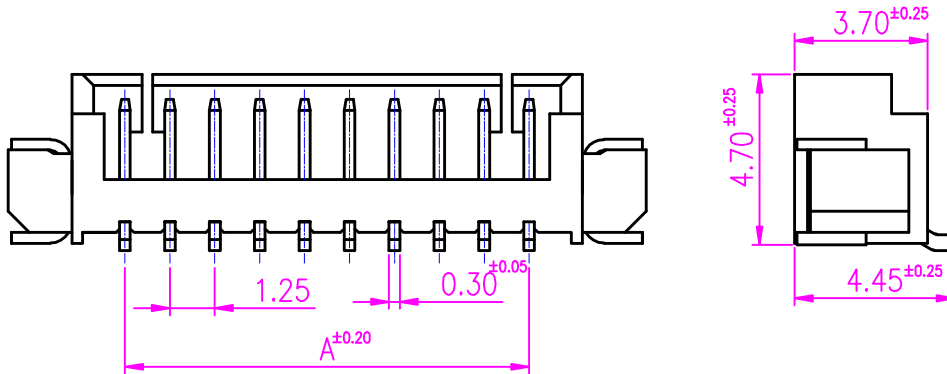
**TEMPERATURE RANGE** : -25° TO +85° C  
**PROCESS RATING** : 230°C FOR 5SEC



# PROTECTRON ELECTROMECH (P) LTD

DESCRIPTION : 1.25mm PITCH WIRE TO BOARD HEADER,  
SURFACE MOUNT TYPE ,STRAIGHT

PART NO:P9056M29-19-X  
X=NO. OF WAYS(2-18)



RECOMMENDED PCB LAYOUT  
(PCB TOLERANCE ±0.10)

A	ORIGINAL	ARUN	19.01.2005		
REV.	DESCRIPTION	DRN BY	DATE	CKED BY	APP'D BY

Projection: 	Scale: NTS	Sht. Size: A4	Gen. Tol.: ±0.35mm	ALL DIMENSIONS ARE IN MM. IF UNLESS OTHERWISE SPECIFIED.
-----------------	------------	---------------	--------------------	---



# PROTECTRON ELECTROMECH (P) LTD

DESCRIPTION : 1.25mm PITCH WIRE TO BOARD HEADER,  
SURFACE MOUNT TYPE ,STRAIGHT

PART NO:P9056M29-19-X  
X=NO. OF WAYS(2-18)

### ORDERING INFORMATION

P9056M29-19-X

NO OF WAYS  
(2-18)

CIRCUIT	DIM.A(mm)	DIM.B(mm)	CIRCUIT	DIM.A(mm)	DIM.B(mm)
2	1.25	7.75	B=11	12.50	19.00
3	2.50	9.00	C=12	13.75	20.25
4	3.75	10.25	D=13	15.00	21.50
5	5.00	11.50	E=14	16.25	22.75
6	6.25	12.75	F=15	17.50	24.00
7	7.50	14.00	G=16	18.75	25.25
8	8.75	15.25	H=17	20.00	26.50
9	10.00	16.50	I=18	21.25	27.75
A=10	11.25	17.75			

MATES WITH

P9056H / P9056T

MOQ- ----

SPQ- ----