

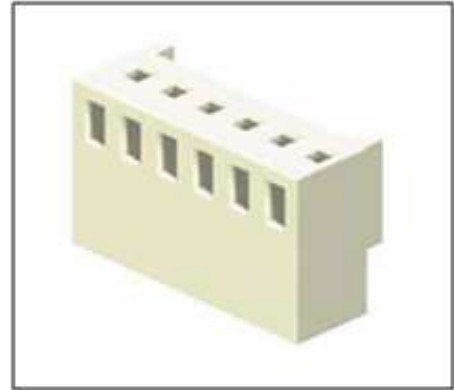


PROTECTRON ELECTROMECH (P) LTD

DESCRIPTION : HOUSING WITH RAMP FOR 2.5mm PITCH CONNECTOR

PART NO: P9055H29-00-X
X=NO. OF WAYS(2-20)

RoHS



PHYSICAL

INSULATION

MATERIAL : NYLON
FLAMMABILITY : UL94V-0
COLOR : NATURAL COLOR
PACKAGING TYPE : BULK PACKING

ELECTRICAL

INSULATION RESISTANCE : 1000M OHMS MIN
DIELECTRIC WITHSTANDING : 1500V AC/MIN

MECHANICAL DATA

WIRE PULL OUT FORCE : 4.50kg MAX/ 22 AWG

ENVIRONMENTAL DATA

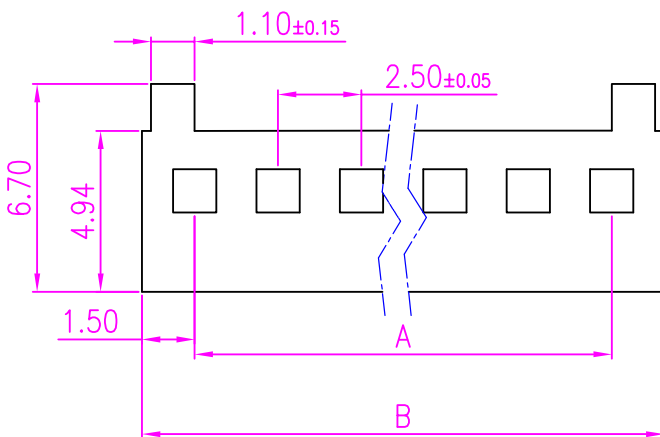
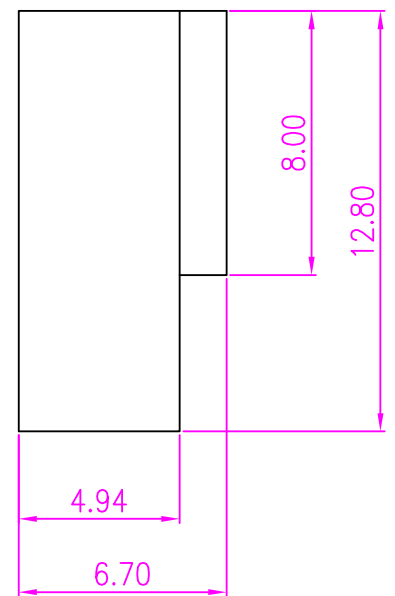
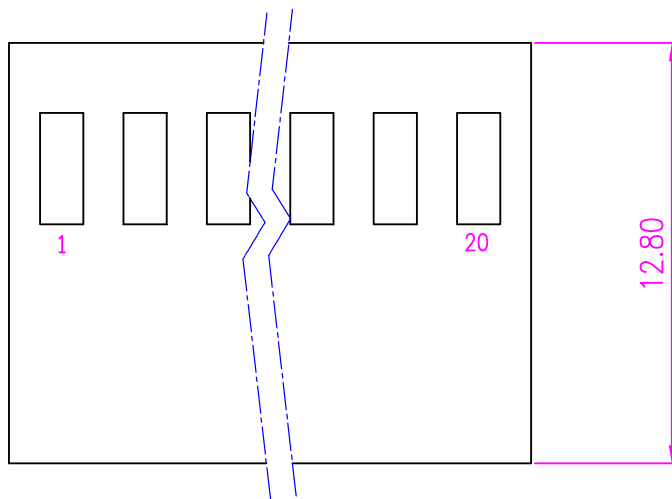
TEMPERATURE RANGE : -40° TO +105° C



PROTECTRON ELECTROMECH (P) LTD

DESCRIPTION : HOUSING WITH RAMP FOR 2.5mm PITCH CONNECTOR

PART NO: P9055H29-00-X
X=NO. OF WAYS(2-20)



A1	DRAWING IS REVISED.	ANIL	18.09.2008		
A	ORIGINAL	SACHIN	25.05.2004		
REV.	DESCRIPTION	DRN BY	DATE	CKED BY	APP'D BY
Projection:		Scale: NTS	Sht. Size: A4	Gen. Tol.: ±0.25mm	ALL DIMENSIONS ARE IN MM. IF UNLESS OTHERWISE SPECIFIED.



PROTECTRON ELECTROMECH (P) LTD

DESCRIPTION : HOUSING WITH RAMP FOR 2.5mm PITCH CONNECTOR

PART NO: P9055H29-00-X
X=NO. OF WAYS(2-20)

ORDERING INFORMATION

P9055H29-00-X

NO OF WAYS
(2-20)

NO. OF WAYS	DIMENSION		PART NUMBER
	A	B	
2	2.5±0.08	5.50	P9055H29-00-2
3	5.0±0.10	8.00	P9055H29-00-3
4	7.5±0.10	10.50	P9055H29-00-4
5	10.0±0.10	13.00	P9055H29-00-5
6	12.5±0.10	15.50	P9055H29-00-6
7	15.0±0.15	18.00	P9055H29-00-7
8	17.5±0.15	20.50	P9055H29-00-8
9	20.0±0.15	23.00	P9055H29-00-9
10	22.5±0.15	25.50	P9055H29-00-A
11	25.0±0.15	28.00	P9055H29-00-B
12	27.5±0.20	30.50	P9055H29-00-C
13	30.0±0.20	33.00	P9055H29-00-D
14	32.5±0.20	35.50	P9055H29-00-E
15	35.0±0.25	38.00	P9055H29-00-F
16	37.5±0.25	40.50	P9055H29-00-G
17	40.0±0.30	43.00	P9055H29-00-H
18	42.5±0.30	45.50	P9055H29-00-I
19	45.0±0.30	48.00	P9055H29-00-J
20	47.5±0.35	50.50	P9055H29-00-K

MATES WITH

CRIMP TERMINAL:
P9050T SERIES

MOQ- ----

SPQ- ----