



PROTECTRON ELECTROMECH (P) LTD

DESCRIPTION :TEST POINT 1mm PCB MOUNTING INSULATED,
CONICAL

PART NO:P8001-1X-1X
1st X=TYPE OF COLOR
2nd X=PLATING

RoHS



PHYSICAL

INSULATION

MATERIAL : POLYPROPYLENE

COLOR : REFER TABLE

CONTACT

MATERIAL : COPPER ALLOY, SILVER OR GOLD PLATED

PACKAGING TYPE : BULK PACKING

ELECTRICAL

CONTACT RESISTANCE : 5m OHMS Max.

INSULATION RESISTANCE : 1000M OHMS Min.

DIELECTRIC WITHSTANDING : 500V AC Min.

MECHANICAL DATA

MOUNTING HOLE DIA IN PCB : $\phi 1.3\text{mm}$

ENVIRONMENTAL DATA

TEMPERATURE RANGE : -25°C TO +70°C



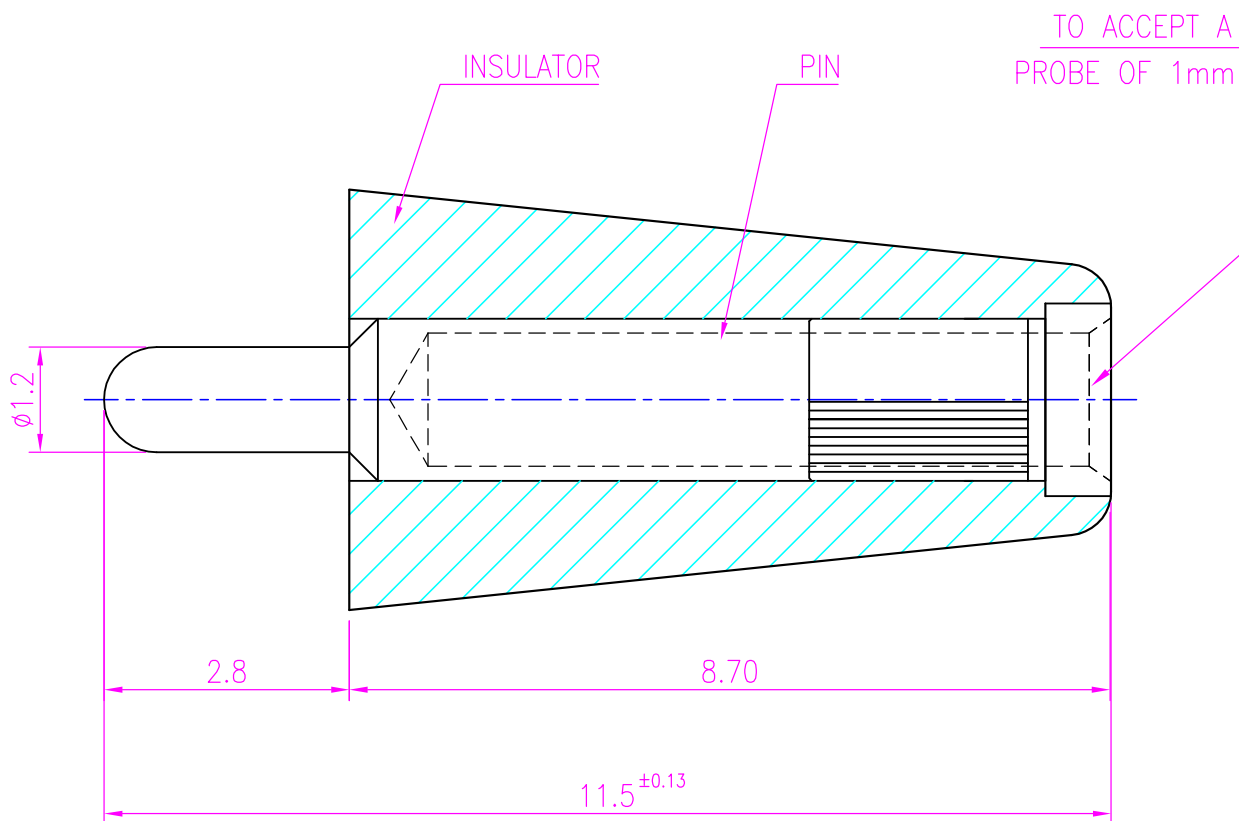
PROTECTRON ELECTROMECH (P) LTD


DESCRIPTION : TEST POINT 1mm PCB MOUNTING INSULATED,
CONICAL

PART NO: P8001-1X-1X

1st X=TYPE OF COLOR

2nd X=PLATING



A1	DESIGN CHANGED				SACHIN	26.06.2006	SURINDRA
A	ORIGINAL				SAMSON	08.06.2001	
REV.	D E S C R I P T I O N				BY	DATE	APP'D BY
Projection: 		Scale: NTS	Sht. Size: A4	Gen. Tol.:±0.35mm	ALL DIMENSIONS ARE IN MM. IF UNLESS OTHERWISE SPECIFIED.		



PROTECTRON ELECTROMECH (P) LTD

DESCRIPTION :TEST POINT 1mm PCB MOUNTING INSULATED,
CONICAL

PART NO:P8001-1X-1X

1st X=TYPE OF COLOR

2nd X=PLATING

ORDERING INFORMATION

P8001-1X-1X

X= TYPE OF COLOR	
BLACK	0
BROWN	1
RED	2
ORANGE	3
YELLOW	4
GREEN	5
BLUE	6
VIOLET	7
GREY	8
WHITE	9

X=PLATING	
Ag 5 μ	1
Ni2 Au0.2 μ	2

MATES WITH

P8003, P8005

MOQ- 2500 MIN

SPQ- 2500 PER PACK