

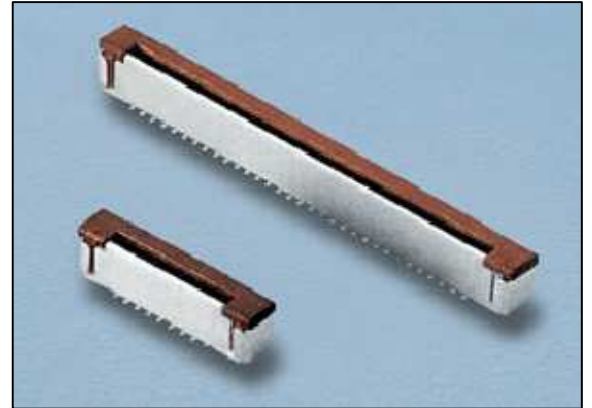


PROTECTRON ELECTROMECH (P) LTD

DESCRIPTION : FPC/FFC 1.0mm ZIF SMT TYPE TOP ENTRY

PART NO: P7045V2C024XX-X
(SEE TABLE)

RoHS



PHYSICAL

INSULATOR BODY : GLASS FIBER NYLON, UL94V-0
TERMINALS : PHOSPHOR BRONZE, TIN PLATED
PACKAGING TYPE : TUBE/ TAPE AND REEL

ELECTRICAL

CURRENT RATING : 0.5A
INSULATION RESISTANCE : 500M OHMS MIN
DIELECTRIC WITHSTANDING : 500V AC/MIN
CONTACT RESISTANCE : 30m OHMS MAX

ENVIRONMENTAL DATA

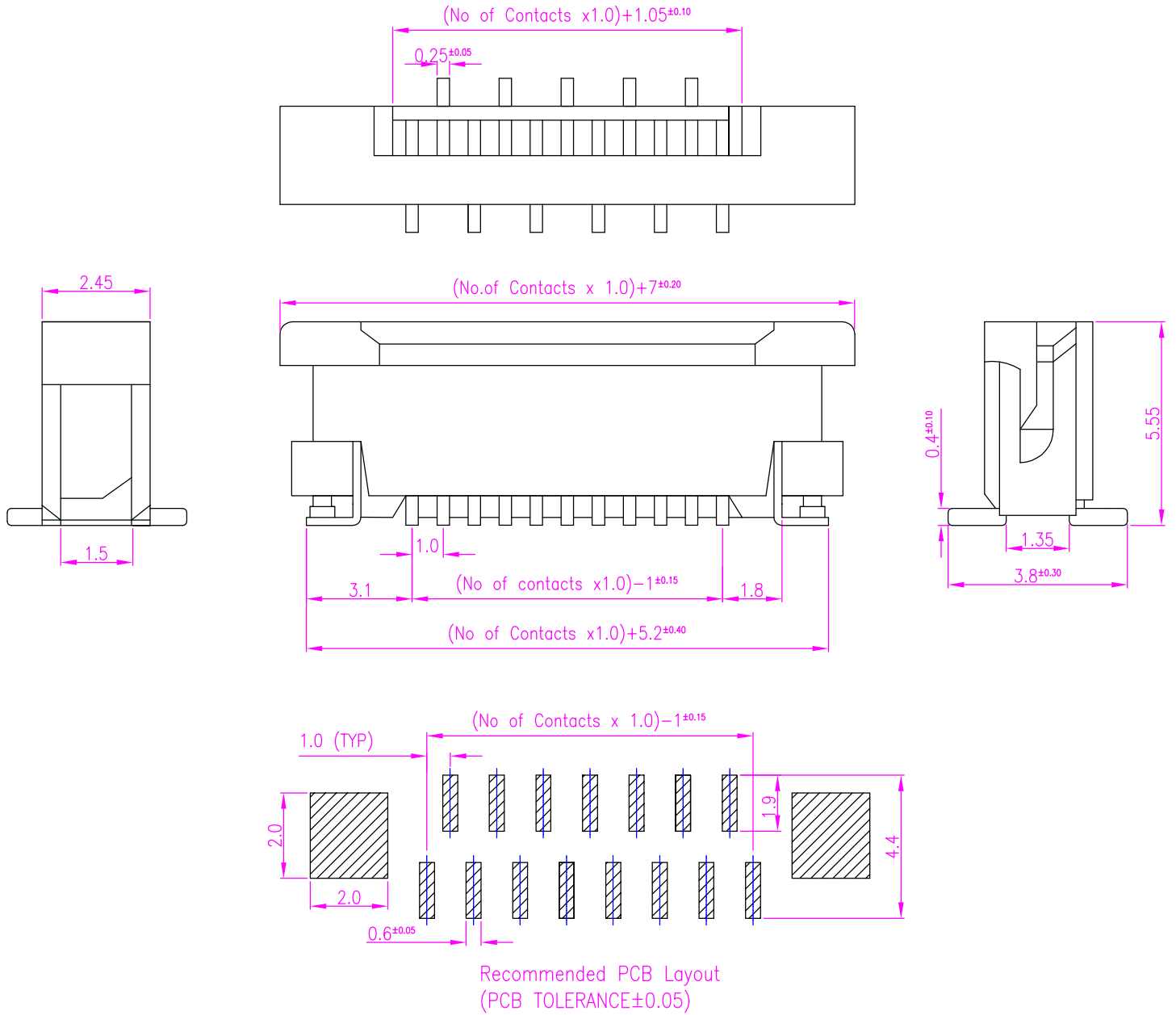
TEMPERATURE RANGE : -40° TO +85° C



PROTECTRON ELECTROMECH (P) LTD

DESCRIPTION : FPC/FFC 1.0mm ZIF SMT TYPE TOP ENTRY

PART NO: P7045V2C024XX-X
(SEE TABLE)



A	ORIGINAL	ARUN	23.12.2004			
REV.	DESCRIPTION		DRN BY	DATE	CKED BY	APP'D BY
Projection: 		Scale: NTS	Sht. Size: A4	Gen. Tol.: $\pm 0.3\text{mm}$ $\pm 0.2^\circ$	ALL DIMENSIONS ARE IN MM. IF UNLESS OTHERWISE SPECIFIED.	

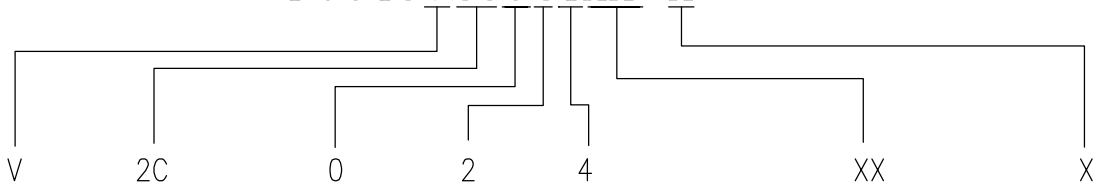


PROTECTRON ELECTROMECH (P) LTD

DESCRIPTION :FPC/FFC 1.0mm ZIF SMT TYPE TOP ENTRY

PART NO:P7045V2C024XX-X
(SEE TABLE)

P7045V2C024XX-X



SERIES	MOUNTING TYPE	ACTUATOR COLOUR	PLATING	NO.OF CONTACTS	PACKING TYPE
P7045	V=VERTICALCONTACT	0=BLACK	4=5μ TIN-LEAD	03 TO 32	T=TUBE R=TAPE & REEL

MOQ- ----

SPQ- ----

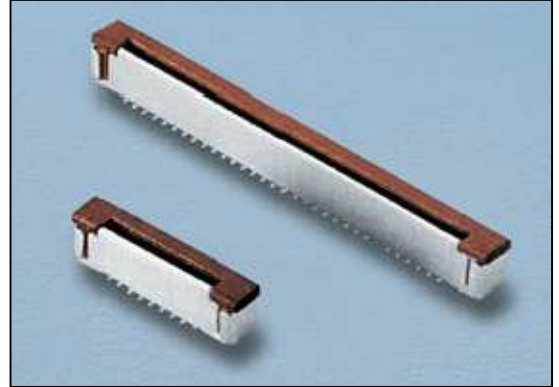


PROTECTRON ELECTROMECH (P) LTD

DESCRIPTION : 1mm PITCH FPC CONNECTOR, VERTICAL TYPE
CONTACT, SMT

PART NO: P7045V2C024XX-XS1
(SEE TABLE)

RoHS



PHYSICAL

INSULATOR BODY : GLASS FIBER NYLON, UL94V-0
TERMINALS : PHOSPHOR BRONZE, TIN PLATED
PACKAGING TYPE : TUBE/ TAPE AND REEL

ELECTRICAL

CURRENT RATING : 0.5A
INSULATION RESISTANCE : 500M OHMS MIN
DIELECTRIC WITHSTANDING : 500V AC/MIN
CONTACT RESISTANCE : 30m OHMS MAX

ENVIRONMENTAL DATA

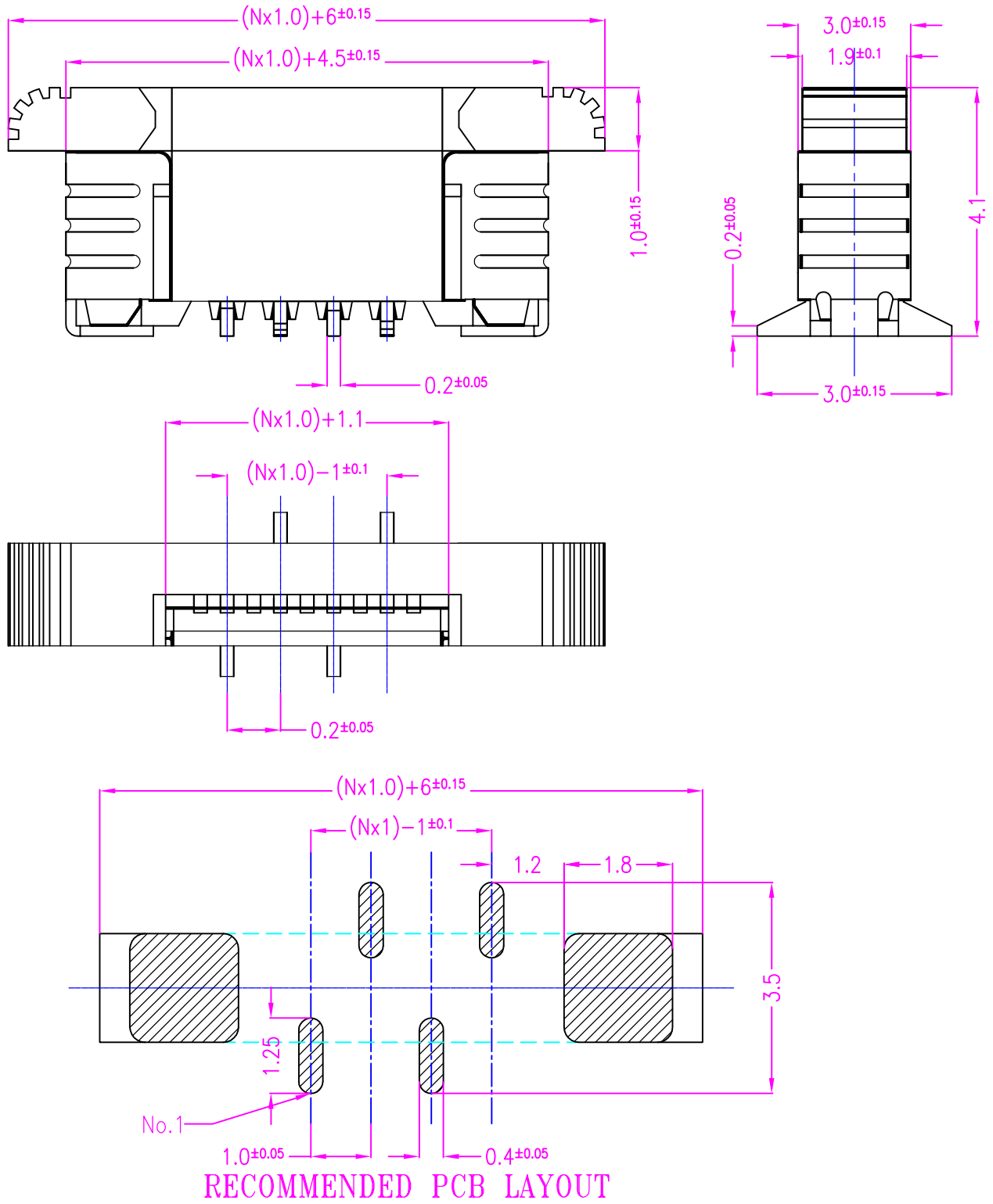
TEMPERATURE RANGE : -40° TO +85° C



PROTECTRON ELECTROMECH (P) LTD

DESCRIPTION : 1mm PITCH FPC CONNECTOR, VERTICAL TYPE CONTACT, SMT

PART NO: P7045V2C024XX-XS1
(SEE TABLE)



A	ORIGINAL	RAJESH	24.04.2012			
REV.	DESCRIPTION		DRN BY	DATE	CKED BY	APP'D BY
Projection: 		Scale: NTS	Sht. Size: A4	Gen. Tol.: $\pm 0.3\text{mm}$ $\pm 0.2^\circ$	ALL DIMENSIONS ARE IN MM. IF UNLESS OTHERWISE SPECIFIED.	

<http://www.protectron.in>
protectron@protectron.in

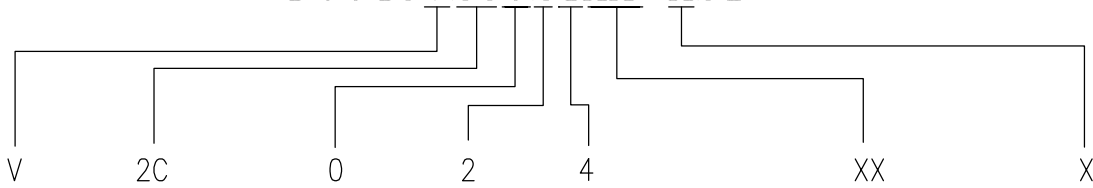


PROTECTRON ELECTROMECH (P) LTD

DESCRIPTION : 1mm PITCH FPC CONNECTOR, VERTICAL TYPE CONTACT, SMT

PART NO: P7045V2C024XX-XS1
(SEE TABLE)

P7045V2C024XX-XS1



SERIES	MOUNTING TYPE	ACTUATOR COLOUR	PLATING	NO.OF CONTACTS	PACKING TYPE
P7045	V=VERTICALCONTACT	0=BLACK	4=5 μ TIN-LEAD	03 TO 32	T=TUBE R=TAPE & REEL

MOQ- ----

SPQ- ----

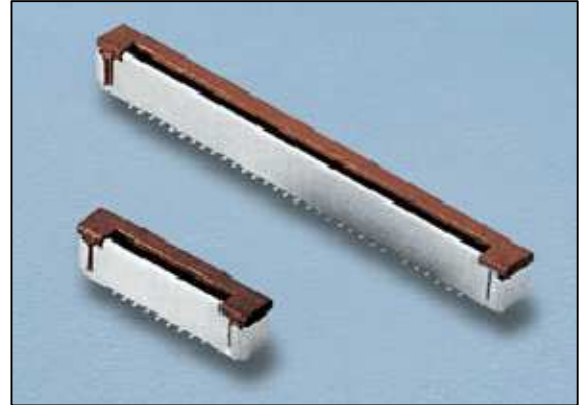


PROTECTRON ELECTROMECH (P) LTD

DESCRIPTION : 1mm PITCH FPC CONNECTOR, VERTICAL TYPE
CONTACT, SMT

PART NO: P7045V2C024XX-XS11
(SEE TABLE)

RoHS



PHYSICAL

HOUSING : HIGH TEMP. PLASTIC (UL94V-0)
CONTACTS : PHOSPHOR BRONZE
PACKAGING TYPE : TUBE/ TAPE AND REEL

ELECTRICAL

CURRENT RATING : 50V, AC/DC
INSULATION RESISTANCE : 50M OHMS MIN
DIELECTRIC WITHSTANDING : 250V AC/MIN
CONTACT RESISTANCE : 40m OHMS MAX
VOLTAGE RATING : 0.4A AC/DC

ENVIRONMENTAL DATA

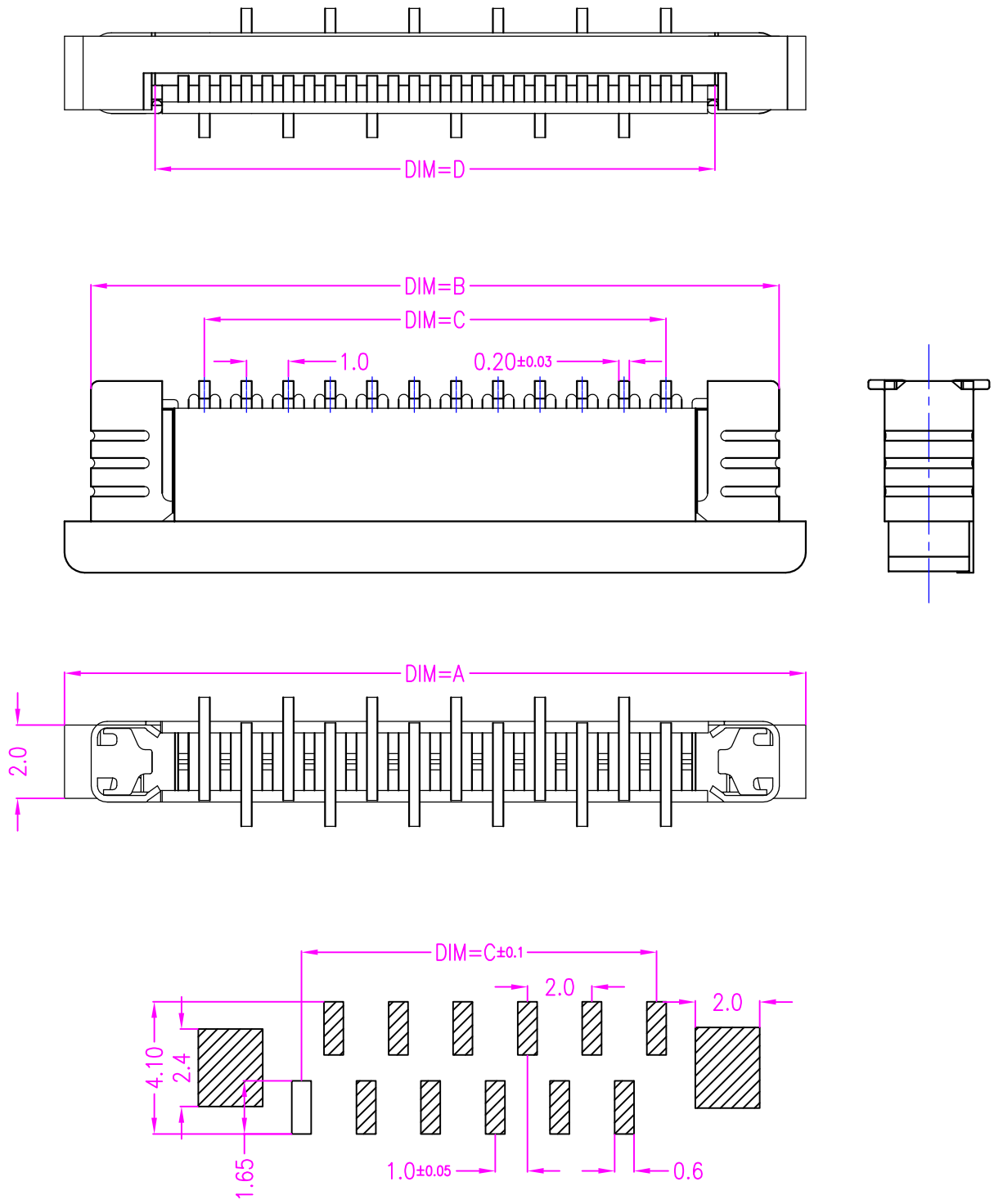
TEMPERATURE RANGE : -25° TO +85° C



PROTECTRON ELECTROMECH (P) LTD

DESCRIPTION : 1mm PITCH FPC CONNECTOR, VERTICAL TYPE CONTACT, SMT

PART NO: P7045V2C024XX-XS11
(SEE TABLE)



RECOMMENDED PCB LAYOUT

A	ORIGINAL	RAJESH	23.04.2012			
REV.	DESCRIPTION		DRN BY	DATE	CKED BY	APP'D BY
Projection: 		Scale: NTS	Sht. Size: A4	Gen. Tol.: ±0.3mm ±0.2°	ALL DIMENSIONS ARE IN MM. IF UNLESS OTHERWISE SPECIFIED.	



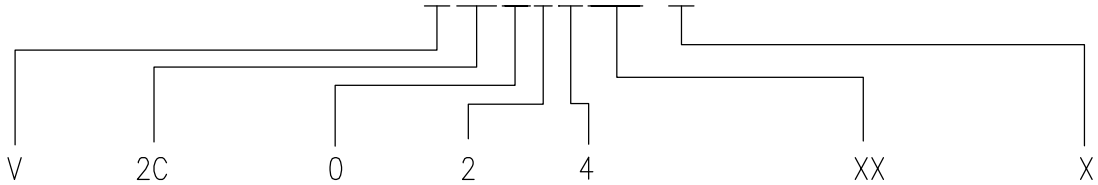
PROTECTRON ELECTROMECH (P) LTD

DESCRIPTION : 1mm PITCH FPC CONNECTOR, VERTICAL TYPE CONTACT, SMT

PART NO: P7045V2C024XX-XS11 (SEE TABLE)

PIN	DIMENSIONS					PIN	DIMENSIONS				
	A	B	C	D	E		A	B	C	D	E
4	10.1	9.0	4.0	5.1	4.40	17	23.1	22.0	17.0	18.1	4.40
5	11.1	10.0	5.0	6.1		18	24.1	23.0	18.0	19.1	4.40/4.90
6	12.1	11.0	6.0	7.1		19	25.1	24.0	19.0	20.1	4.90
7	13.1	12.0	7.0	8.1		20	26.1	25.0	20.0	21.1	4.40
8	14.1	13.0	8.0	9.1		21	27.1	26.0	21.0	22.1	4.90
9	15.1	14.0	9.0	10.1		22	28.1	27.0	22.0	23.1	
10	16.1	15.0	10.0	11.1		23	29.1	28.0	23.0	24.1	4.90
11	17.1	16.0	11.0	12.1		24	30.1	29.0	24.0	25.1	
12	18.1	17.0	12.0	13.1		25	31.1	30.0	25.0	26.1	
13	19.1	18.0	13.0	14.1		26	32.1	31.0	26.0	27.1	
14	20.1	19.0	14.0	15.1		27	33.1	32.0	27.0	28.1	
15	21.1	20.0	15.0	16.1		28	34.1	33.0	28.0	29.1	
16	22.1	21.0	16.0	17.1		29	35.1	34.0	29.0	30.1	

P7045V2C024XX-XS11



SERIES	MOUNTING TYPE	ACTUATOR	COLOUR	PLATING	NO.OF CONTACTS	PACKING TYPE
P7045	V=VERTICALCONTACT	0=BLACK		4=5μ TIN-LEAD	03 TO 32	T=TUBE R=TAPE & REEL

MOQ- ----

SPQ- ----